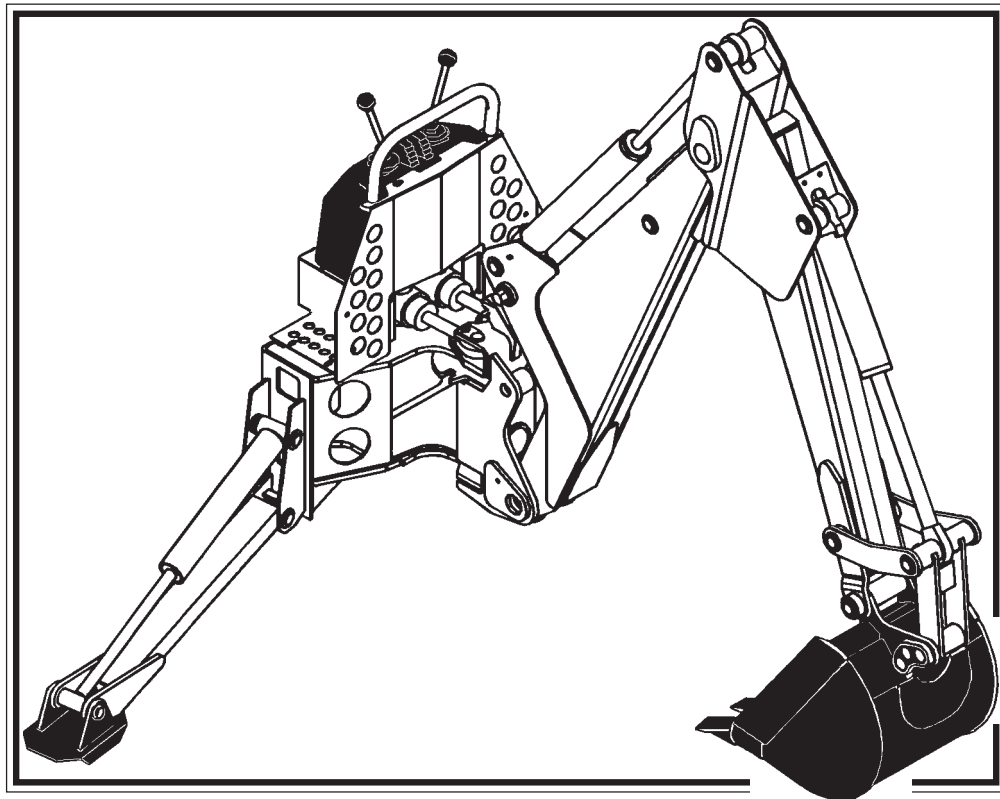


CONTRACTOR 509A BACKHOE

OM509
Rev. 2
6737
1/11/00



OPERATOR'S & PARTS MANUAL

75477

ALLMAND BROS. INC.
P.O. Box 888 • HOLDREGE, NE USA
(308) 995-4495 • (800) 562-1373
Fax 308-995-5887

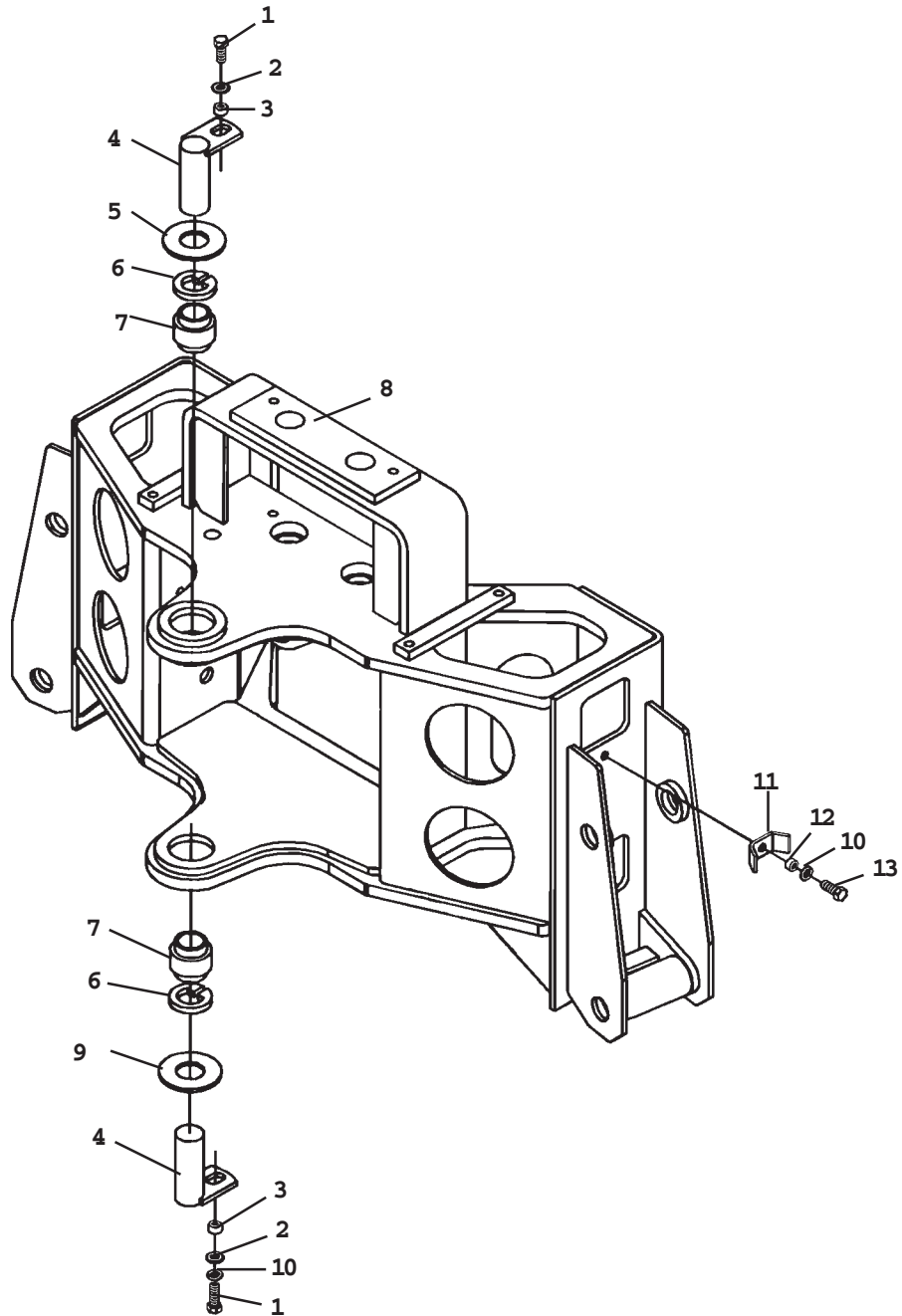
TABLE OF CONTENTS

509A BACKHOE SERVICE PARTS SECTION

MAINFRAME	#922482
Mainframe	
Swing Post	
Swing Cylinder	
Stabilizers	
Hose Bundle Clamps	
BOOM & DIPPER ASSEMBLY	#922483
Boom	
Dipper	
CONSOLE ASSEMBLY	#922479
VALVE ASSEMBLY	#922267
CYLINDERS	
SWING CYLINDER	#81827
STABILIZER CYLINDER	#922032 & 922076
BOOM CYLINDER	#922035
DIPPER CYLINDER	#922034
BUCKET CYLINDER	#922039
HOSE SETS	
MAINFRAME HOSE SET	#922105
BOOM & DIPPER HOSE SET	#922106
STABILIZER PAD OPTIONS	
FLAT STABILIZER PAD ASSEMBLY	#920116
GROUSER STABILIZER PAD ASSEMBLY	#920115
RUBBER STABILIZER PAD ASSEMBLY	#920117
OPTIONAL STABILIZER CYLINDER COVER	#922484
OPTIONAL SWING LOCK ASSEMBLY	#922485
BUCKET OPTIONS	
12" BUCKET	STANDARD #922486 SEVERE DUTY #922489
16" BUCKET	#920132 #922490
18" BUCKET	#922487 #922491
20" BUCKET	#922488 #922492
24" BUCKET	#920135 #922493
DECALS	#922199

MAINFRAME ASSEMBLY

ASSEMBLY #922482
MAINFRAME



MAINFRAME ASSEMBLY

ASSEMBLY #922482

MAINFRAME

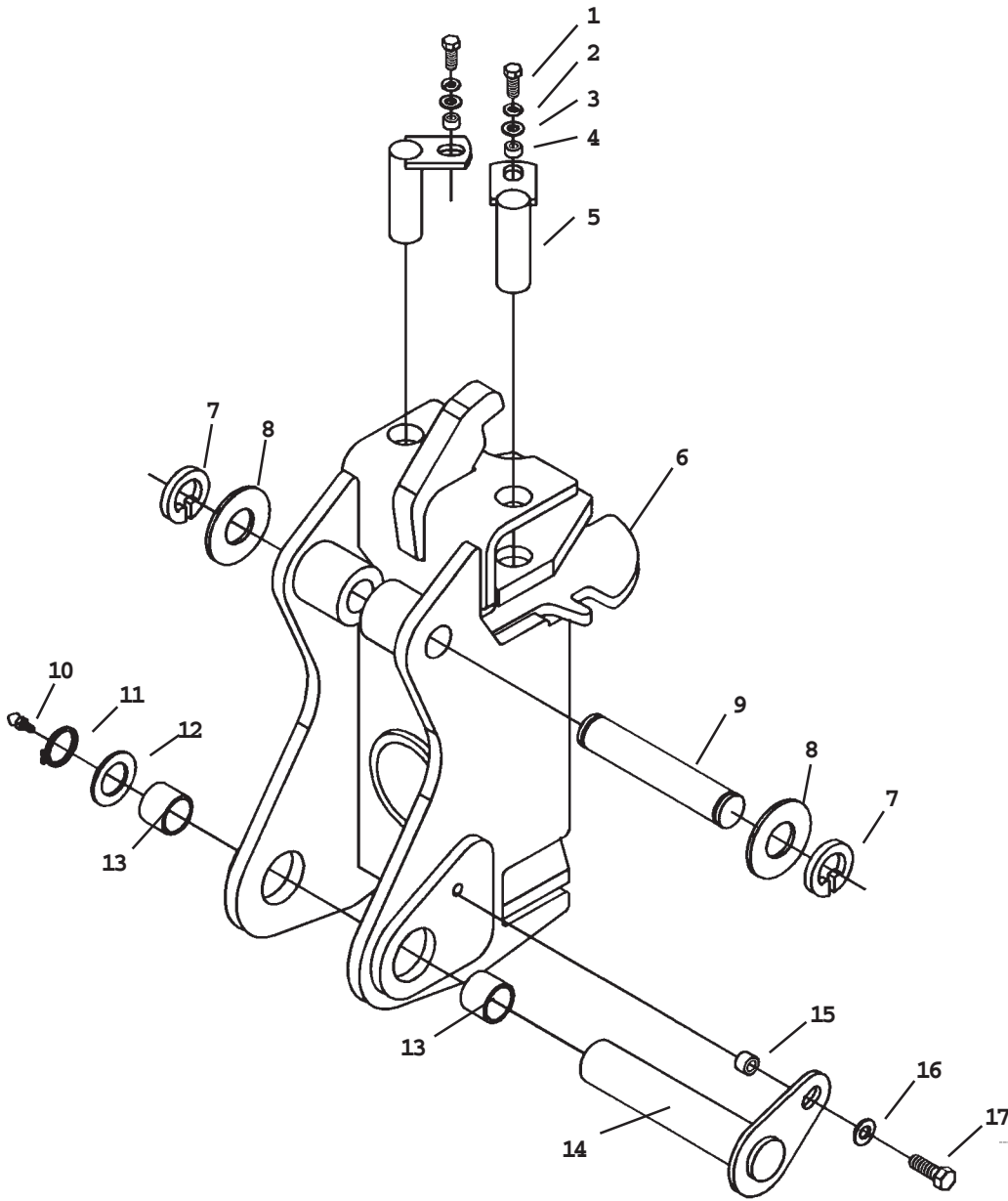
NO	REQ'D	PART NO.	DESCRIPTION
1	2	922272	.38" UNC X 1.00" Hex Capscrew
2	2	922273	.38" Flat Washer
3	2	922109	Spacer Tube
4	2	920113	Replacement Pin
	2	922275	Grease Zerk
5	1	922271	Thrust Washer 1.38" X .125"
6	2	922275	Snap Ring
7	2	920114	Bearing
8	1	922269	Mainframe (Includes (4) 83815 Bushings - Installed with Locktite Grade 680)
9	As Req'd	922220	Thrust Washer 1.38" X .031"
	As Req'd	922221	Thrust Washer 1.38" X .093"
	As Req'd	922227	Thrust Washer 1.38" X .125"
10	3	922277	.38" Lock Washer
11	2	922229	Hose Clamp
12	2	922228	Spacer Tube
13	2	922492	.38" UNC X 1.25" Hex Capscrew

NOTE: Replacement pins are plated.

7375
4-6-98

MAINFRAME ASSEMBLY

ASSEMBLY #922482
SWINGPOST



MAINFRAME ASSEMBLY

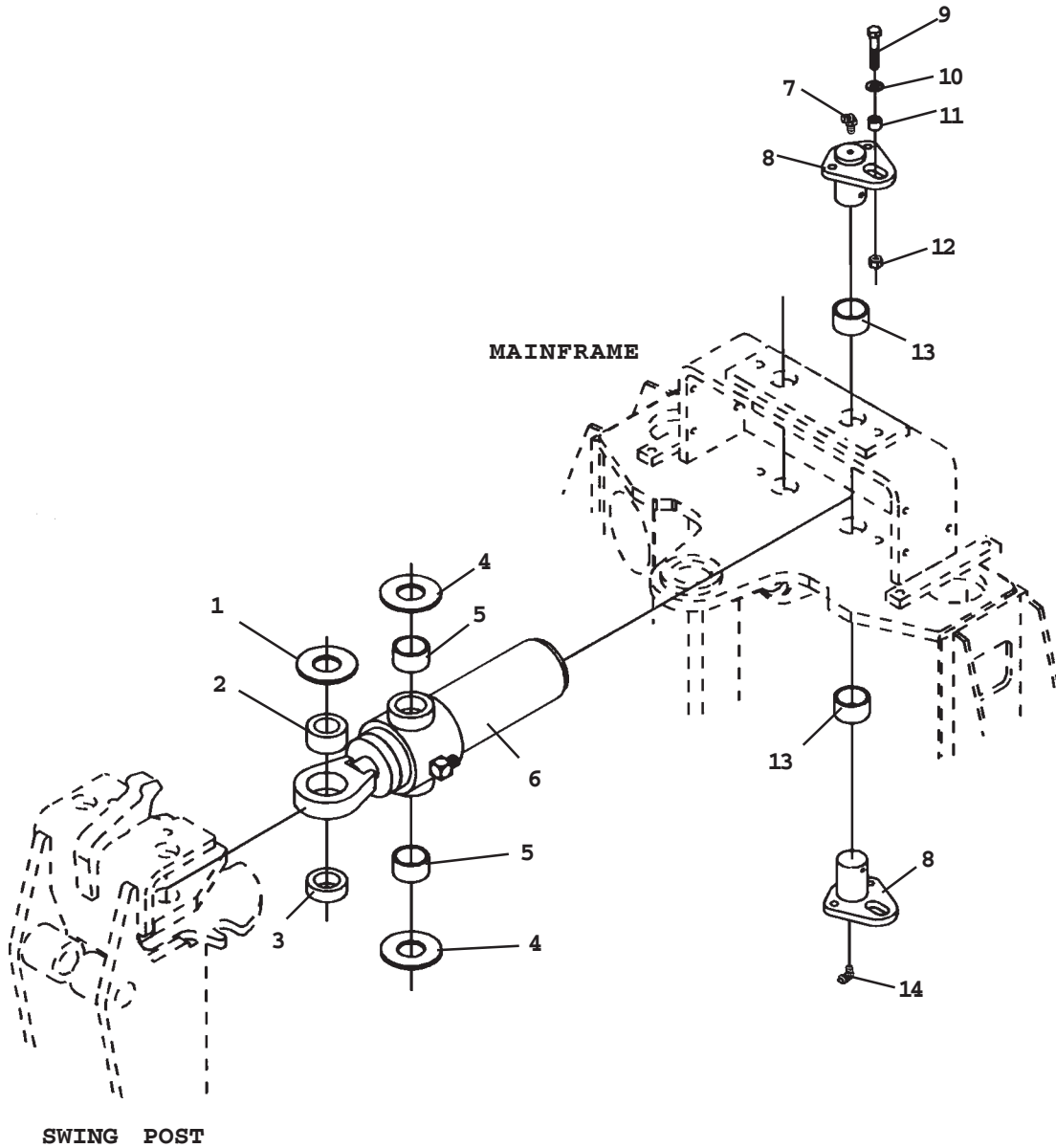
ASSEMBLY #922482

SWINGPOST

NO	REQ'D	PART NO.	DESCRIPTION
1	2	922272	.38" UNC X 1.00" Hex Capscrew
2	2	922277	.38" Lock Washer
3	2	922273	.38" Flat Washer
4	2	922109	Spacer Tube
5	2	922027	Replacement Pin
6	1	922253	Swing Post (Includes (2) 82402 Bushings - Installed with Locktite Grade 680)
7	2	922110	Snap Ring
8	As Req'd	922220	Thrust Washer 1.38" X .031"
	As Req'd	922221	Thrust Washer 1.38" X .093"
	As Req'd	922271	Thrust Washer 1.38" X .125"
9	1	922024 (1)	Replacement Pivot Pin
10	1	922274	Grease Zerk
11	1	922185	Snap Ring
12	2	922258	Thrust Washer
13	-	922026	Bushing (Included in Swing Post Assembly) (Installed with Locktite Grade 680)
14	1	922025	Replacement Pivot Pin
15	1	922254	Spacer Tube
16	1	922495	.50" Flat Washer
17	1	922496	.50" UNC X 1.00" Capscrew (Installed with Locktite Grade 680)

MAINFRAME ASSEMBLY

ASSEMBLY #922482
SWING CYLINDER



MAINFRAME ASSEMBLY

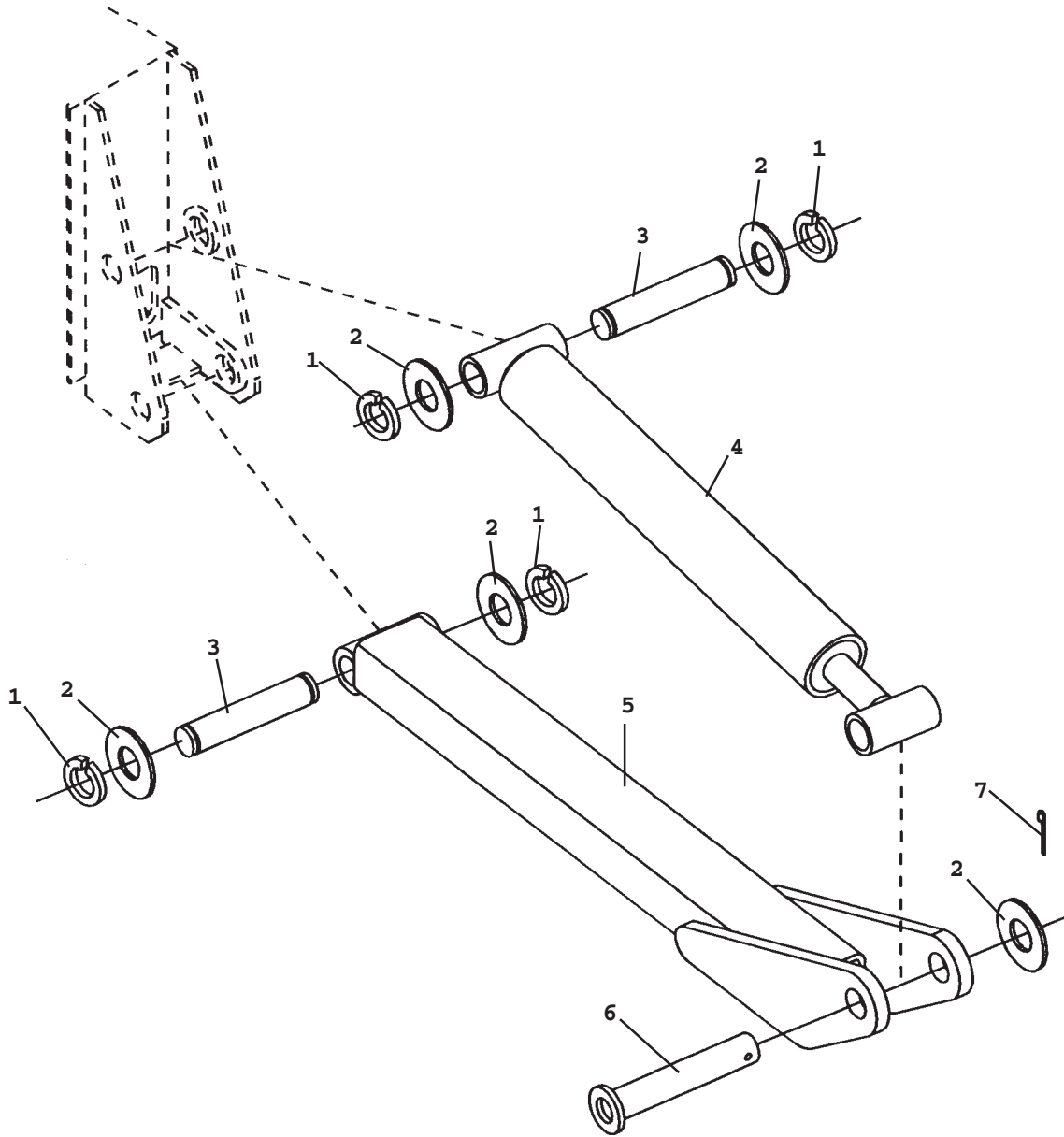
ASSEMBLY #922482
SWING CYLINDER

NO	REQ'D	PART NO.	DESCRIPTION
1	As Req'd	922266	Thrust Washer 1.25" X .078"
	As Req'd	922194	Thrust Washer 1.25" X .145"
	As Req'd	922279	Thrust Washer 1.25" X .031"
2	-	922081	Self-Aligning Bushing (Included in Swing Cylinder Assembly)
3	2	922218	Spacer
4	4	922226	Thrust Washer
5	-	922029	Needle Bearing (Included in Swing Cylinder Assembly)
6	2	922070	Swing Cylinder Assembly (Includes (2) 82441 Needle Bearings and (1) 62523 Bushings)
	2	922274	Grease Zerk
	2	922280	LH Lateral Tee
7	2	922281	90° Grease Zerk
8	4	922028	Pin
9	4	922282	.38" UNC X 2.00" Hex Capscrew
10	4	922273	.38" Flat Washer
11	4	922225	Spacer Tube
12	4	922283	.38" UNC Deformed Lock Nut
13	-	922113	Bushing (Included in Mainframe - Installed with Locktite Grade 680)
14	2	922281	90° Grease Zerk

MAINFRAME ASSEMBLY

ASSEMBLY #922482

STABILIZERS



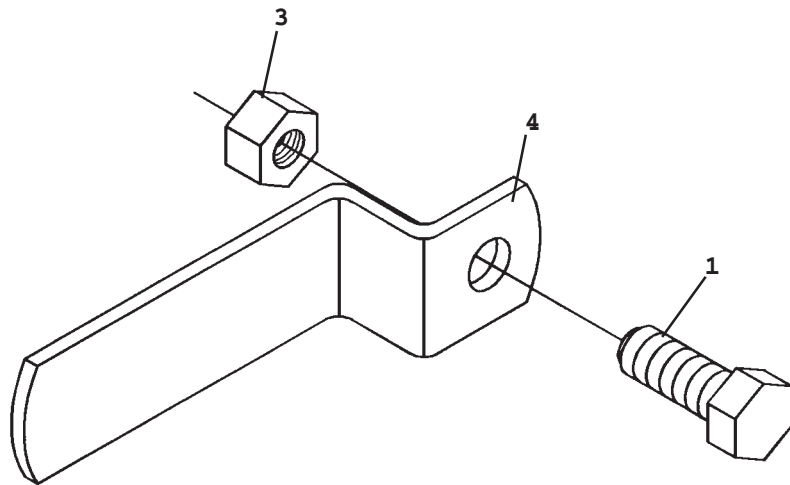
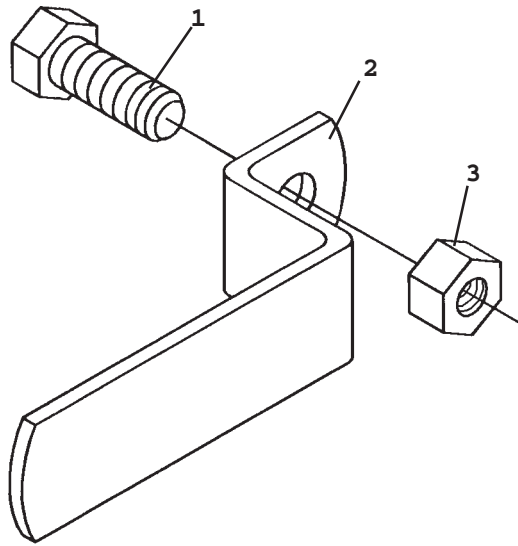
MAINFRAME ASSEMBLY

ASSEMBLY #86244

STABILIZERS

NO	REQ'D	PART NO.	DESCRIPTION
1	8	922284	Snap Ring
2	As Req'd	922266	Thrust Washer 1.25" X .078"
	As Req'd	922194	Thrust Washer 1.25" X .145"
	As Req'd	922279	Thrust Washer 1.25" X .031"
3	4	922030 (1)	Replacement Pin
4	2	922032 (2)	Stabilizer Cylinder Assembly (1.50" Rod)
	2	922076	Stabilizer Cylinder Assembly (1.25" Rod)
	4	922274	Grease Zerk
5	2	922186	Stabilizer Arm
6	2	922031	Replacement Pin
7	2	922270	Cotter Pin

HOSE BUNDLE CLAMPS



HOSE BUNDLE CLAMPS

UP TO SERIAL #---10065

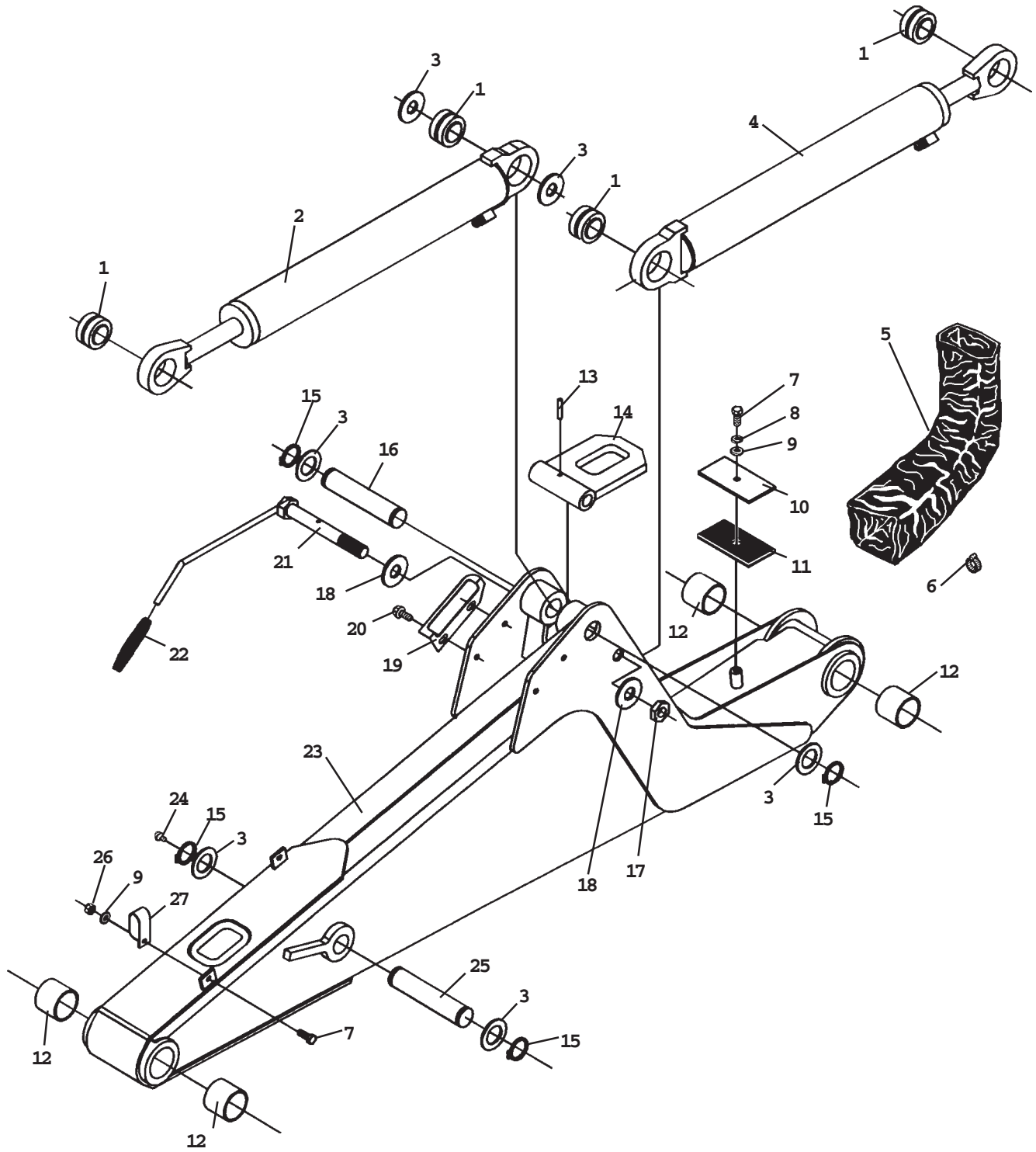
NO	REQ'D	PART NO.	DESCRIPTION
1	2	922272	.38" UNC X 1.00" Hex Capscrew
2	1	922240	Right Hose Bundle Clamp
3	2	922283	.38" UNC Deformed Lock Nut
4	1	922241	Left Hose Bundle Clamp

SERIAL #---10065 AND UP

NO	REQ'D	PART NO.	DESCRIPTION
1	2	922272	.38" UNC X 1.00" Hex Capscrew
2	1	922241	Right Hose Bundle Clamp
3	2	922283	.38" UNC Deformed Lock Nut
4	1	922241	Left Hose Bundle Clamp

BOOM & DIPPER ASSEMBLY

ASSEMBLY #922483



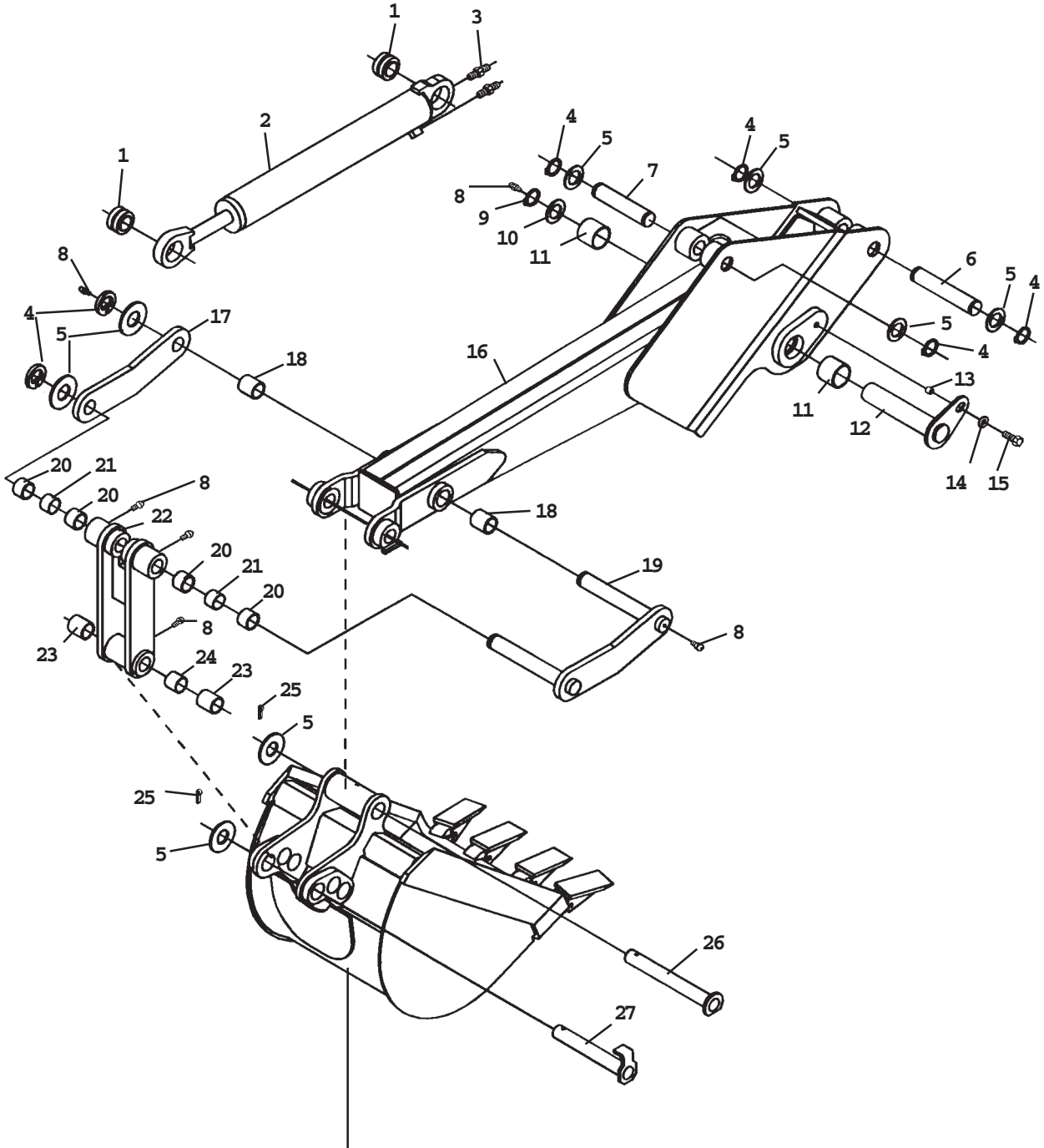
BOOM & DIPPER ASSEMBLY

ASSEMBLY #922483

NO	REQ'D	PART NO.	DESCRIPTION
1	-	922033	Self Aligning Bushing (Included in Cylinder Assemblies)
2	1	922034	Dipper Cylinder Assembly
	2	922274	Grease Zerk
3	As Req'd	922260	Thrust Washer 1.38" x .031
	As Req'd	922193	Thrust Washer 1.38" x .090
	As Req'd	922192	Thrust Washer 1.38" x .125
4	1	922035	Boom Cylinder Assembly
	2	922274	Grease Zerk
5	1	922264	Hose Sock
6	1	922297	Hose Clamp (Included in Console Assembly)
7	3	922272	.38" UNC X 1.00" Hex Capscrew
8	1	922277	.38" Lock Washer
9	3	922273	.38" Flat Washer
10	1	922256	Hose Clamp Plate
11	1	922256	Rubber Spacer
12	-	922036	Bushing (Included in Boom Assembly) (Installed with Locktite Grade 680)
13	1	920955	Spring Pin
14	1	920962	Boom Lock
15	4	922110	Snap Ring
16	1	922233 (1)	Replacement Pivot Pin
17	1	920961	.88" UNC Jam Nut
18	2	920957	Spring Washer
19	1	922252	Guide Plate
20	2	922294	.38" UNC X .50" Hex FlangeHead Capscrew
21	1	920960	Handle
22	1	922298	Handle Grip
23	1	922037	Boom Assembly (Includes (4) 82552 Bushings) (Installed with Locktite Grade 680)
24	1	922274	Grease Zerk
25	1	922255 (2)	Replacement Pivot Pin
26	2	922283	.38" UNC Deformed Lock Nut
27	2	922251	Double Hose Clamp

BOOM & DIPPER ASSEMBLY

ASSEMBLY #922483



BUCKET

(NOT INCLUDED IN BOOM AND DIPPER ASSEMBLY.)

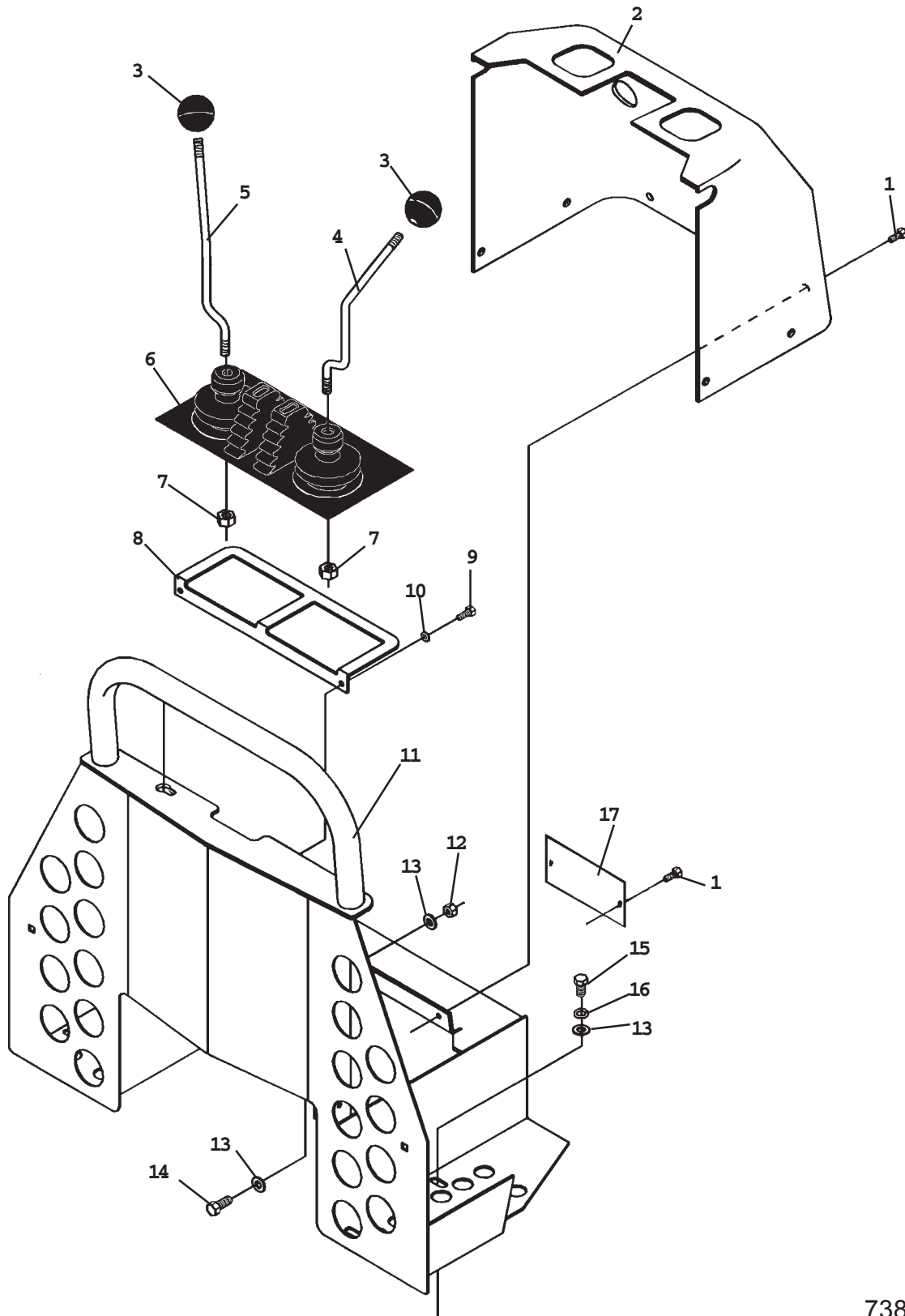
BOOM & DIPPER ASSEMBLY

ASSEMBLY #922483

NO	REQ'D	PART NO.	DESCRIPTION
1	-	922033	Self-Aligning Bushing (Included in Cylinder Assembly)
2	1	922039	Bucket Cylinder Assembly
	2	922274	Grease Zerk
3	2	922052	Straight Adapter
4	6	922110	Snap Ring
5	As Req'd	922260	Thrust Washer 1.38" X .031
	As Req'd	922193	Thrust Washer 1.38" X .090
	As Req'd	922192	Thrust Washer 1.38" X .125
6	1	922232 (1)	Replacement Pivot Pin
7	1	922232 (2)	Replacement Pivot Pin
8	6	922274	Grease Zerk
9	1	922185	Snap Ring
10	As Req'd	922258	Thrust Washer 1.75 X .082
11	-	922042	Bushing (Included in Dipper Assembly) (Install with Locktite Grade 680)
12	1	922025	Replacement Pivot Pin
13	1	922254	Spacer Tube
14	1	922495	.50" Flat Washer
15	1	922505	.50" UNC X 1.50" Hex Capscrew
16	1	922043	Dipper Assembly (Includes (2) 922026 and (2) 922044 Bushings) (Installed with Locktite Grade 680)
17	1	922235	Dipper Link Plate
18	-	922044	Bushing (Included in Dipper Assembly) (Install with Locktite Grade 680)
19	1	922236	Dipper Link
20	-	922045	Bushing (Included in Bucket Link Assembly) (Install with Locktite Grade 680)
21	-	922502	Spacer Tube (Included in Bucket Link Assembly)
22	1	922237	Bucket Link Assembly (Includes (2) 922044 Bushings, (4) 922045 Bushings, (1) 922182 Spacer and (2) 922502 Spacers.) (Bushings installed with Locktite Grade 680)
23	-	922044	Bushing (Included in Bucket Link Assembly) (Install with Locktite Grade 680)
24	-	922182	Bushing (Included in Bucket Link Assembly) (Install with Locktite Grade 680)
25	2	922270	Cotter Pin
26	1	922046	Replacement Pivot Pin
27	1	922047	Replacement Pivot Pin

CONSOLE ASSEMBLY

ASSEMBLY #922479



CONSOLE ASSEMBLY

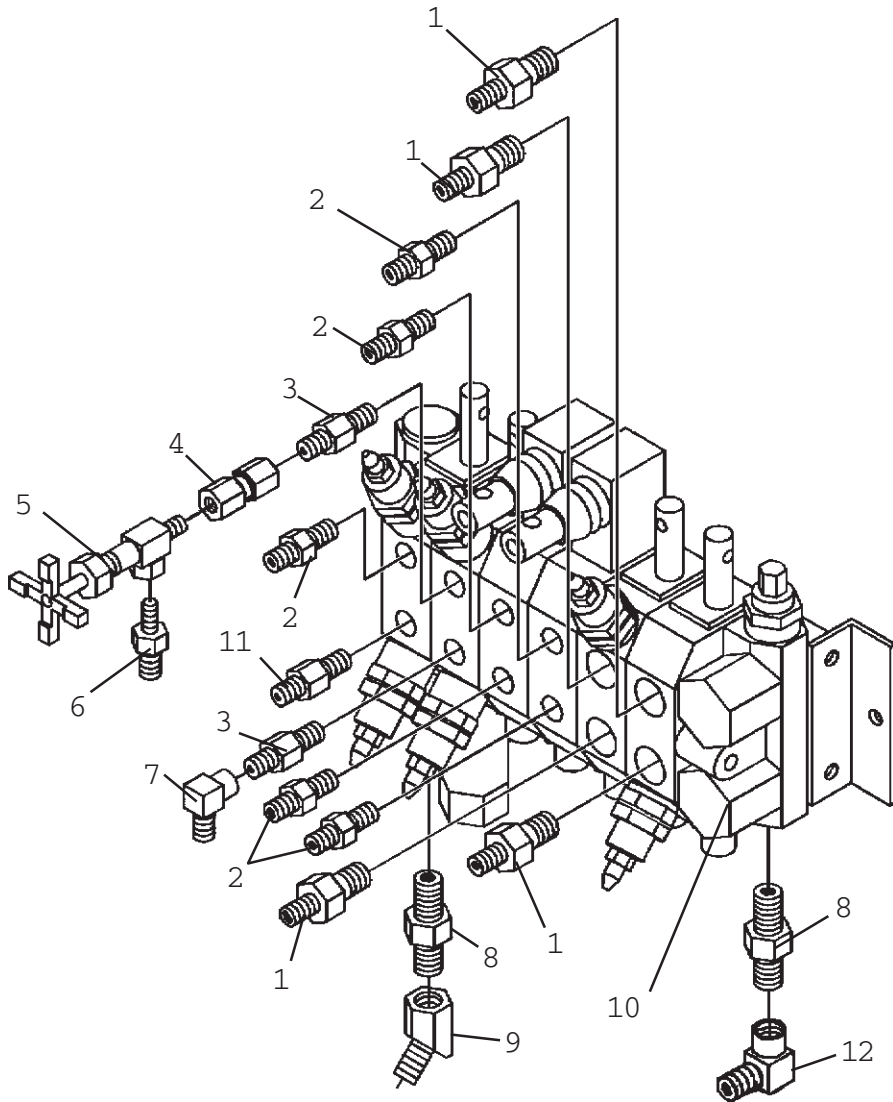
ASSEMBLY #922479

NO	REQ'D	PART NO.	DESCRIPTION
1	8	922306	.25" UNC X .75" Hex Head Body Bolt
2	1	922234	Console Cover with Decals
3	2	922050	Ball Handle
4	1	922048	Control Handle - Left
5	1	922049	Control Handle - Right
6	1	922051	Control Lever Boot
7	2	922307	M10 Hex Nut
8	1	922308	Boot Support Plate
9	2	922309	.25" UNC X .50" Hex Capscrew
10	2	922310	.25" Lock Washer
11	1	922223	Console
12	2	922283	.38" UNC Deformed Lock Nut
13	8	922273	.38" Flat Washer
14	2	922272	.38" UNC X 1.00" Hex Capscrew
15	4	922311	.38" UNC X .75" Hex Capscrew
16	4	922277	.38" Lock Washer
17	1	922312	Cover Plate

7383
12-17-99-2
509A

VALVE ASSEMBLY

ASSEMBLY #922267



VALVE ASSEMBLY

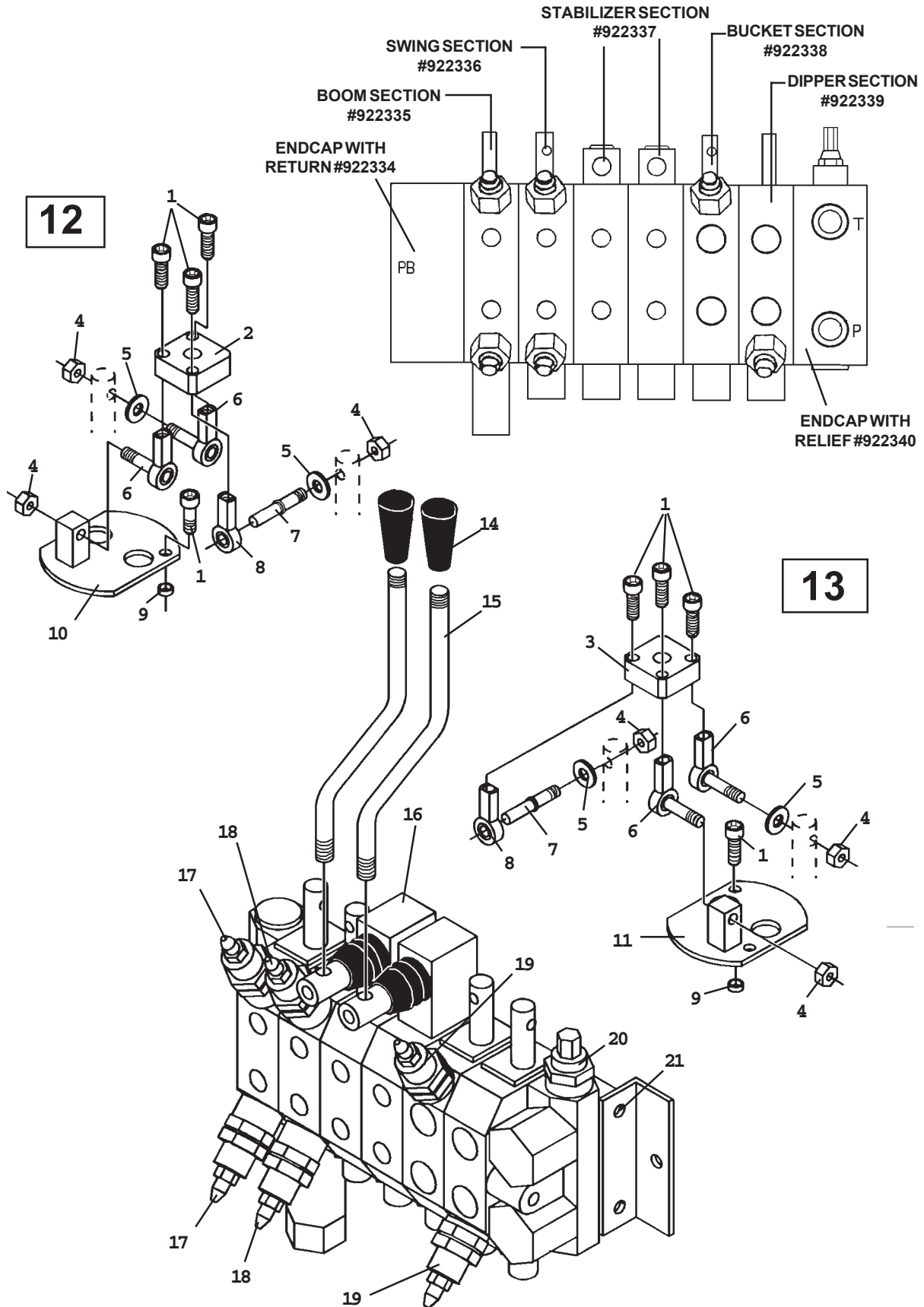
ASSEMBLY #922267

NO	REQ'D	PART NO.	DESCRIPTION
1	4	922052	Straight Adapter 8MBo - 6MJ
2	5	922053	Straight Adapter 6MBo - 6MJ
3	2	922313	Adapter 6MBo - 6MJ (.076 Restrictor)
4	1	922314	Swivel Adapter 4FP - 6FJX
5	1	922056	Needle Valve (Speed Control)
6	1	922057	Straight Adapter 4MP - 6MJ
7	1	922058	90° Street Adapter 6FJX - 6MJ
8	2	922059	Straight Adapter 8MBo - 8MJ
9	1	922060	45° Street Adapter 8FJX - 8FJ
10	1	922061	6-Spool Hidroirma Valve
11	1	922180	Adapter 6MBo - 6MJ (.109 Restrictor)
12	1	911315	90° Street Elbow 8FJX 0 8MJ

7387
12-16-99-2
408 509A

VALVE ASSEMBLY

HIDROIRMA VALVE #922267



VALVE ASSEMBLY

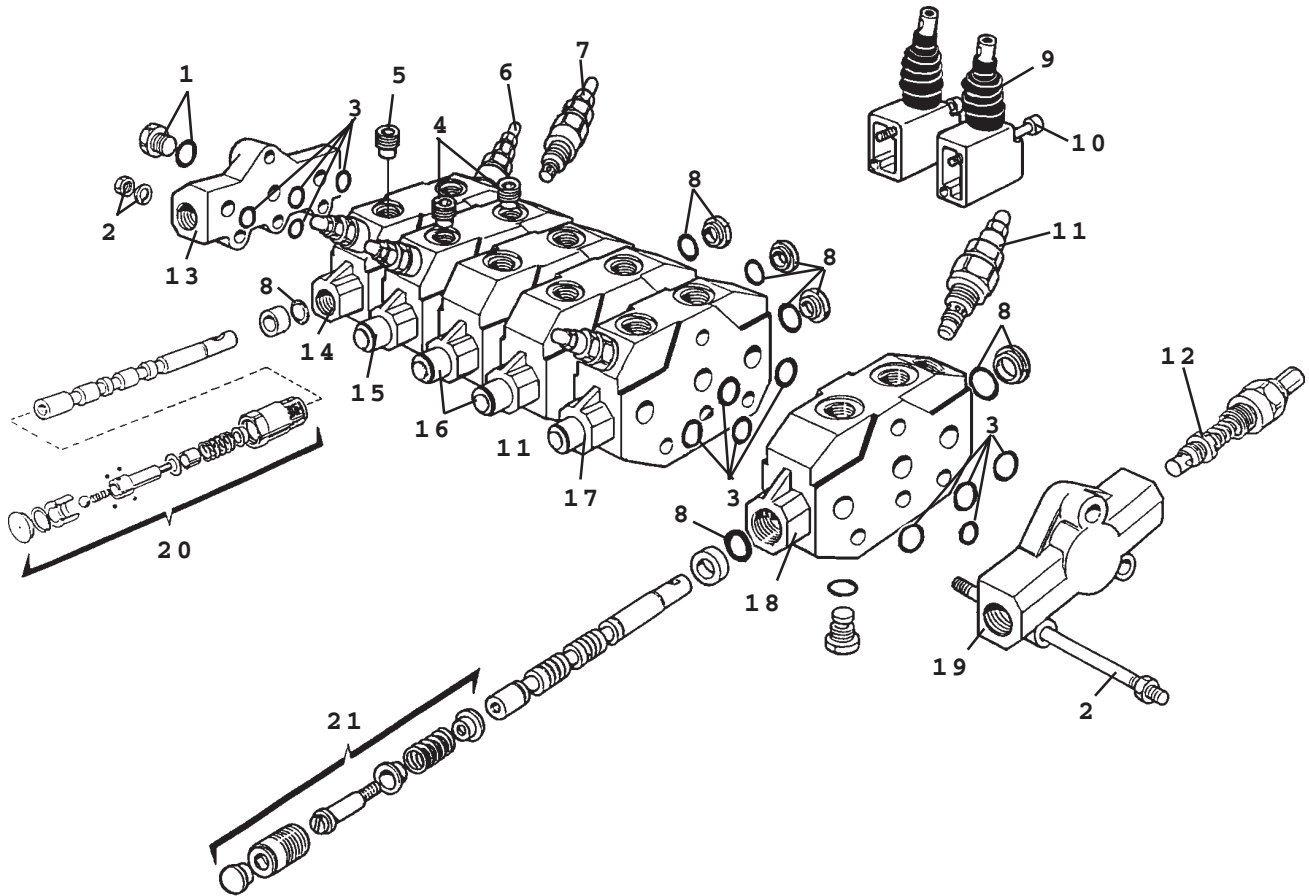
HIDROIRMA VALVE #922267

SERVICE PARTS

NO	REQ'D	PART NO.	DESCRIPTION
1	10	922066	Screw
2	1	922064	Joystick Plate - Left
3	1	922065	Joystick Plate - Right
4	6	922315	Nut
5	4	922316	Washer
6	4	922062	Terminal With Stud
7	2	922169	Joystick Spool Pin
8	2	922063	Terminal
9	4	922317	Bushing
10	1	922318	Left Joystick Support
11	1	922319	Right Joystick Support
12	-	922320	Left Joystick Assembly (Includes Items 1, 2, 4, 5, 6, 7, 8, 9, 10)
13	-	922321	Right Joystick Assembly (Includes Items 1, 3, 4, 5, 6, 7, 8, 9, 11)
14	2	922322	Knob
15	2	922323	Stabilizer Control Lever
16	-	922061	Complete Valve Assembly (Includes all Items on this Page)
17	2	922324	Circuit Relief With Anti-Cav. @ 2500 PSI
18	2	922325	Circuit Relief With Anti-Cav. @ 2250 PSI
19	2	922067	Circuit Relief @ 2500 PSI
20	1	922356	Main Relief @ 2250 PSI
21	3	922327	Tie Bolt Assembly (Includes Tie Bolt, Washer & Nut)

VALVE ASSEMBLY

REPLACEMENT PARTS - HYDROIRMA VALVE



VALVE ASSEMBLY

REPLACEMENT PARTS - HIDROIRMA VALVE

NO	REQ'D	PART NO.	DESCRIPTION
1	-	922328	Plug 8MBo
	-	922329	Replacement O'Ring
2	-	922327	Tie Rod Assembly (Includes Nuts & Washers)
3	-	922069	Section Seal Kit
4	-	922330	Restrictor .076
5	-	922331	Restrictor .109
6	-	922324	Circuit Relief With Anti-Cav. @ 2500 PSI
7	-	922325	Circuit Relief With Anti-Cav. @ 2250 PSI
8	-	922068	Spool Seal Kit
9	-	922332	Stabilizer Lever Assembly
10	-	922333	Single Slot Screw
11	-	922067	Circuit Relief @ 2500 PSI
12	-	922326	Main Relief @ 2250 PSI
13	-	922334	Endcap With Return
14	-	922335	Valve Section - Boom
15	-	922336	Valve Section - Swing
16	-	922337	Valve Section - Stabilizers
17	-	922338	Valve Section - Bucket
18	-	922339	Valve Section - Dipper
19	-	922340	Endcap With Relief
20	-	922341	Float Assembly (Spool NOT Included) (If Float Spool is damaged, it is recommended to purchase a complete Valve Section.)
21	-	922342	Positioner Assembly (Spool NOT Included) (If Positioner Spool is damaged, it is recommended to purchase a complete Valve Section.)

NOTES:

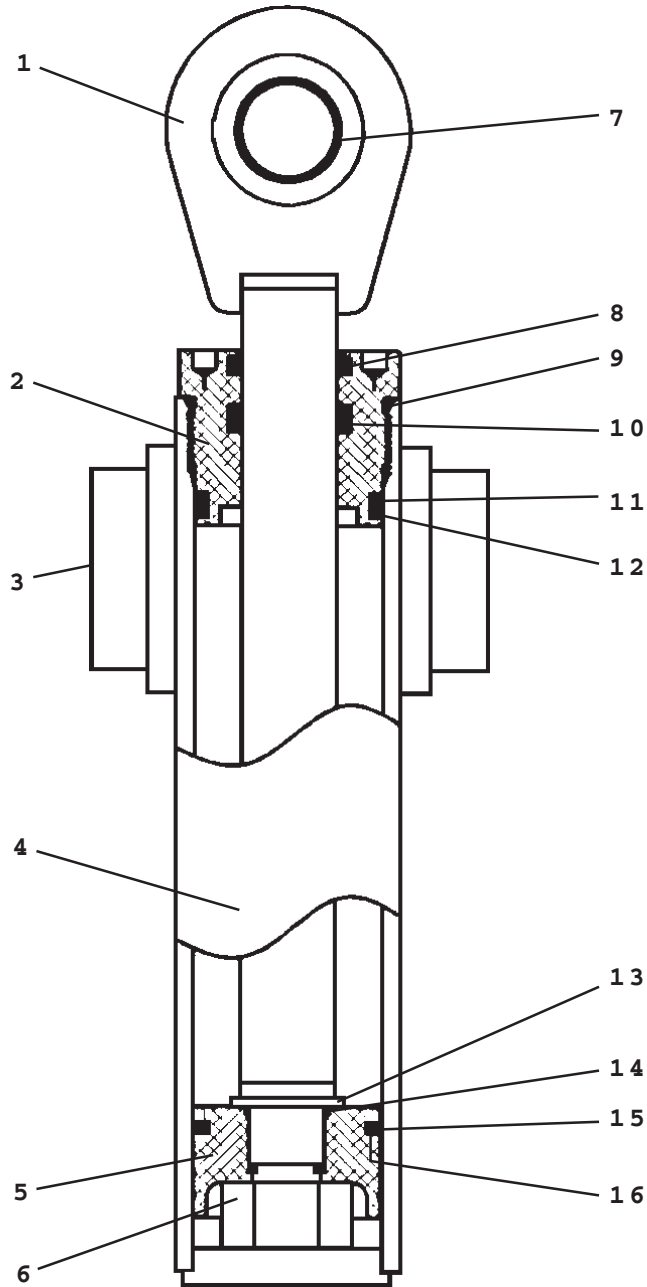
Items without part numbers are not sold separately.

Spool Seal Kit #922068 contains (2) O-Ring Seals and (1) Flanged Washer.

Section Seal Kit #922069 includes (4) O'Rings O'Ring Seals.

CYLINDER ASSEMBLY

SWING CYLINDER ASSEMBLY #922070



CYLINDER ASSEMBLY

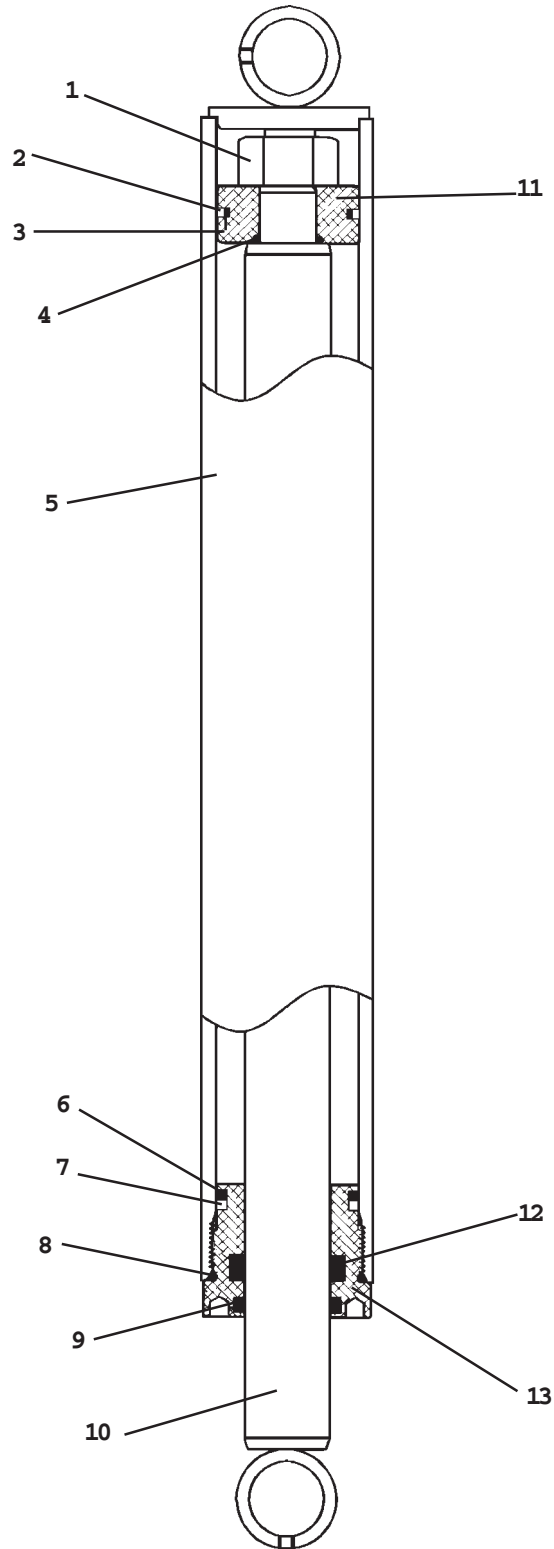
SWING CYLINDER ASSEMBLY #922070

NO	REQ'D	PART NO.	DESCRIPTION
1	1	922077	Cylinder Rod
2	1	922078	Cylinder Gland
3	2	922029	Needle Bearing
4	1	922395	Cylinder Tube
5	1	922080	Piston
6	1	922396	Hex Nut
7	1	922081	Self Aligning Bushing
8	1	922397*	Rod Wiper
9	1	922398*	O'Ring
10	1	922399*	Poly Pak Seal
11	1	922400*	Back-Up Ring
12	1	922401*	O'Ring
13	1	922426	Washer
14	1	922403*	O'Ring
15	1	922404*	Piston Ring
16	1	922405*	O'Ring

NOTE: Seal Kit #922003 Includes all parts marked with an asterisk (*). Parts are not sold separately.

CYLINDER ASSEMBLY

STABILIZER CYLINDER ASSEMBLY #922032
(1.50" DIAMETER CYLINDER ROD)



CYLINDER ASSEMBLY

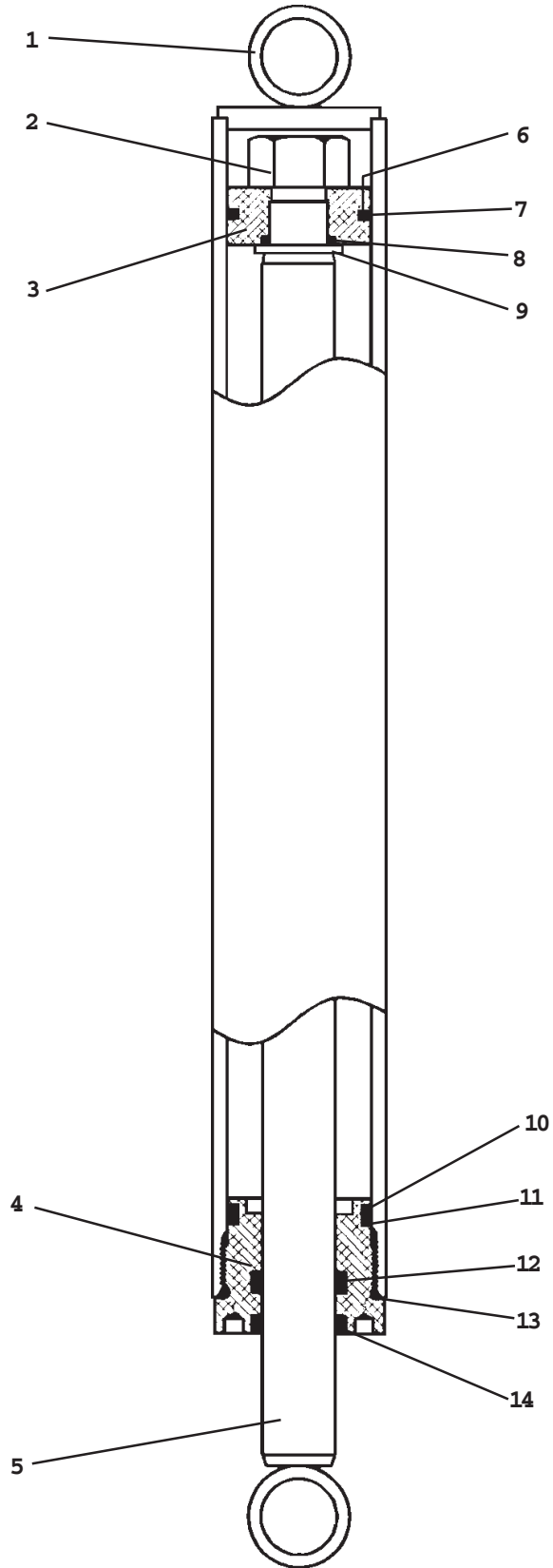
STABILIZER CYLINDER ASSEMBLY #922032
(1.50" DIAMETER CYLINDER ROD)

NO	REQ'D	PART NO.	DESCRIPTION
1	1	922396	HexNut
2	1	922404*	Teflon Piston Ring
3	1	922405*	O'Ring
4	1	922403*	O'Ring
5	1	922406	Cylinder Tube
6	1	922401*	O'Ring
7	1	922400*	Back-Up Ring
8	1	922398*	O'Ring
9	1	922420*	Rod Wiper
10	1	922083	Cylinder Rod
11	1	922019	Piston
12	1	922413*	Poly-Pak Seal
13	1	922085	Cylinder Gland

NOTE: Seal Kit #922506 includes all parts marked with an asterisk (*). Parts are not sold separately.

CYLINDER ASSEMBLY

(1.25 DIAMETER CYLINDER ROD)
STABILIZER CYLINDER ASSEMBLY #922076



CYLINDER ASSEMBLY

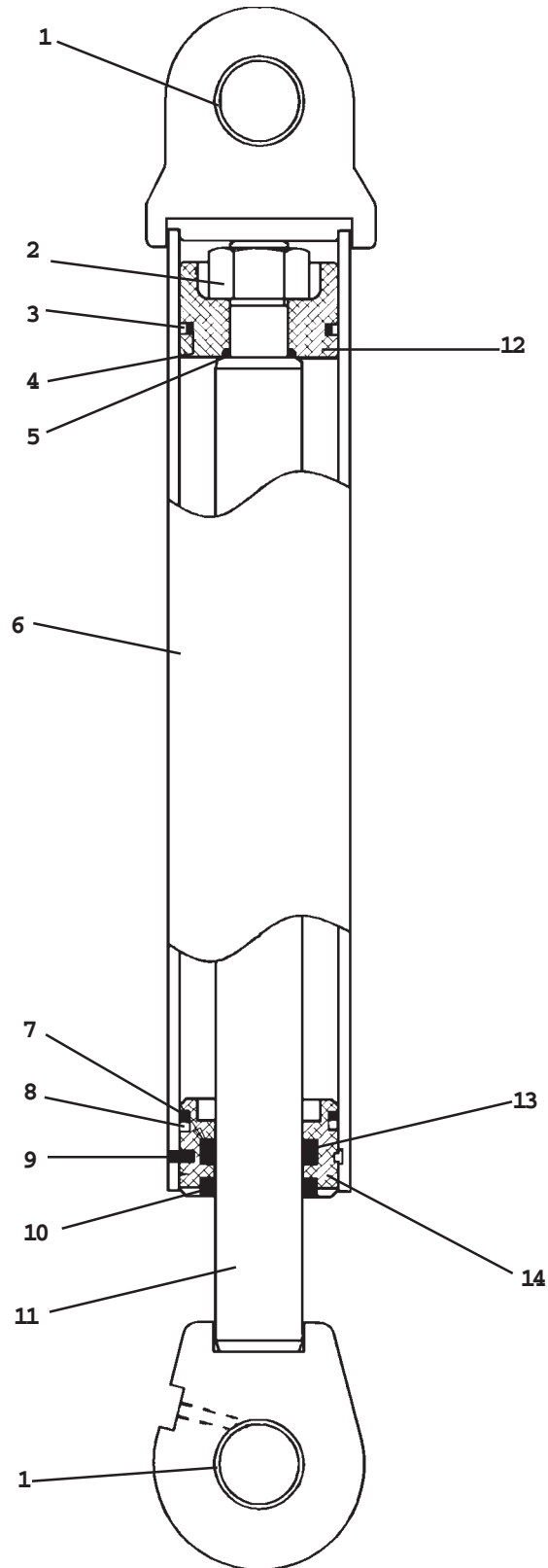
(1.25 DIAMETER CYLINDER ROD)
STABILIZER CYLINDER ASSEMBLY #922076

NO	REQ'D	PART NO.	DESCRIPTION
1	1	922406	Cylinder Tube
2	1	922396	Hex Nut
3	1	922084	Piston
4	1	922078	Cylinder Gland
5	1	922002	Cylinder Rod
6	1	922405*	O'Ring
7	1	922404*	Piston Ring
8	1	922403*	O'Ring
9	1	922426	Washer
10	1	922401*	O'Ring
11	1	922100*	Back-Up Ring
12	1	922399*	Poly Pak Seal
13	1	922398*	O'Ring
14	1	922397*	Rod Wiper

NOTE: Seal Kit #922003 includes all parts marked with an asterisk (*). Parts are not sold separately.

CYLINDER ASSEMBLY

BOOM CYLINDER ASSEMBLY #922035



CYLINDER ASSEMBLY

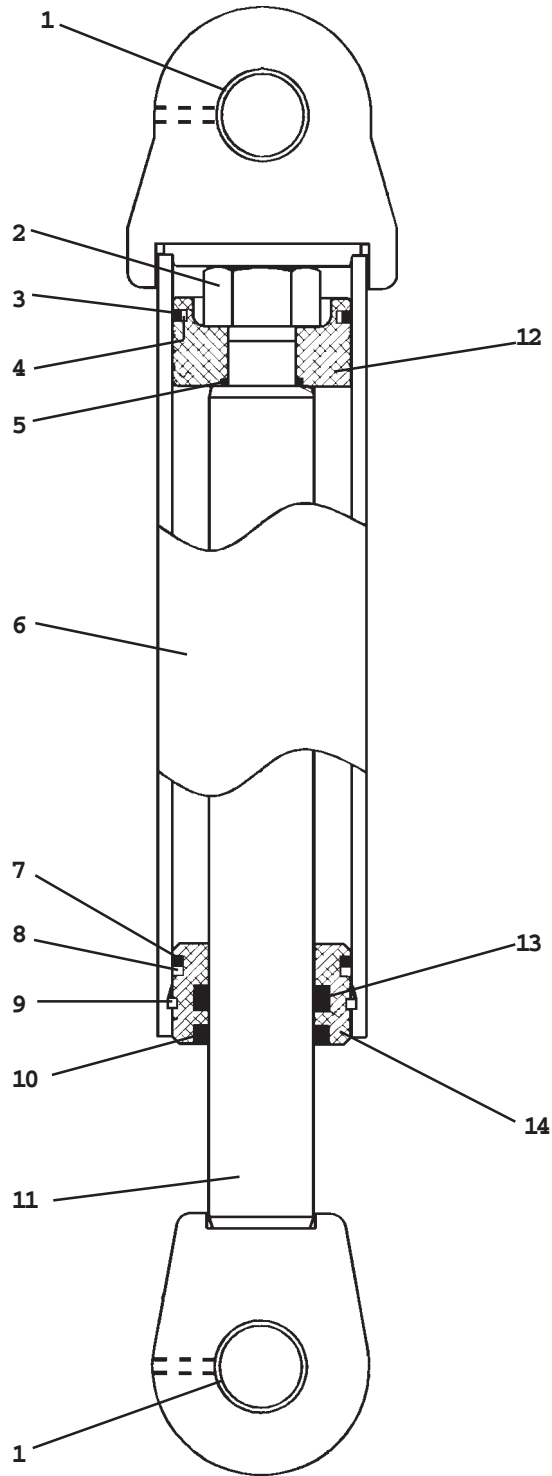
BOOM CYLINDER ASSEMBLY #922035

NO	REQ'D	PART NO.	DESCRIPTION
1	2	922033	Bushing
2	1	922396	Hex Nut
3	1	922408*	Piston Ring
4	1	922398*	O'Ring
5	1	922403*	O'Ring
6	1	922507	Cylinder Tube
7	1	922409*	O'Ring
8	1	922410*	Back-Up Ring
9	1	922411*	Gland Retaining Rod
10	1	922412*	Rod Wiper
11	1	922090	Cylinder Rod
12	1	922091	Piston
13	1	922413*	Poly-Pak Seal
14	1	922092	Cylinder Gland

NOTE: Seal Kit #922508 includes all parts marked with an asterisk (*). Parts are not sold separately.

CYLINDER ASSEMBLY

DIPPER CYLINDER ASSEMBLY #922034



CYLINDER ASSEMBLY

DIPPER CYLINDER ASSEMBLY #922034

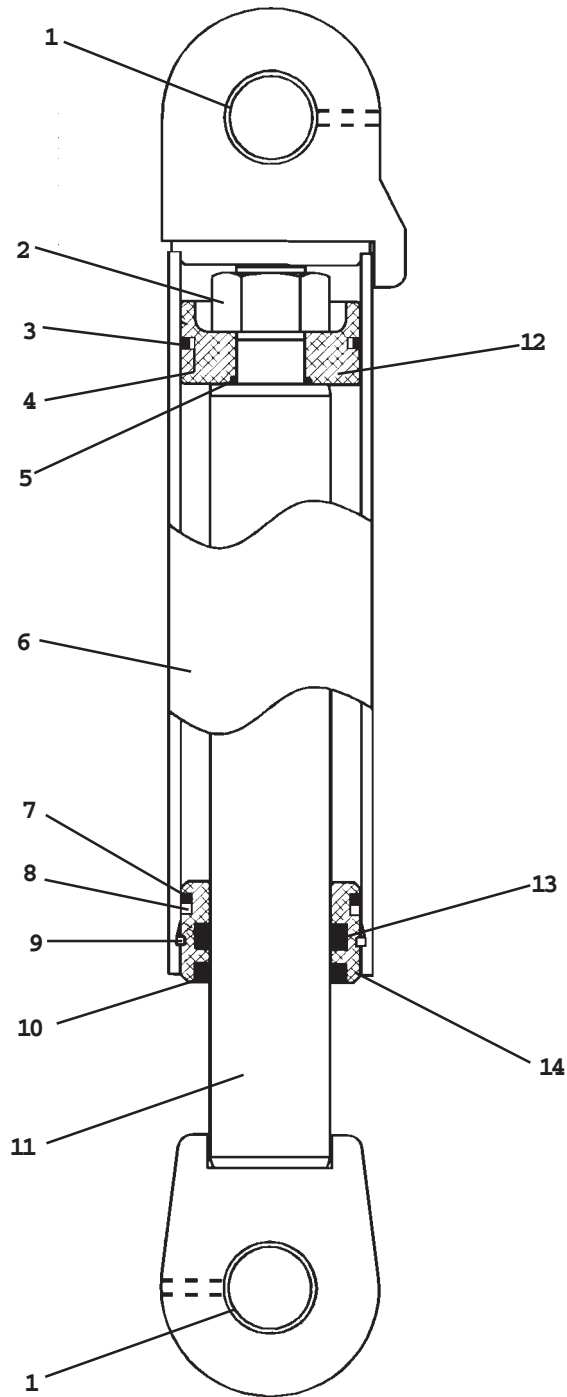
NO	REQ'D	PART NO.	DESCRIPTION
1	2	922033	Bushing
2	1	922509	Hex Nut
3	1	922510*	Teflon Piston Ring
4	1	922419*	O'Ring
5	1	922511*	O'Ring
6	1	922512	Cylinder Tube
7	1	922513*	O'Ring
8	1	922514*	Back-Up Ring
9	1	922515*	Gland Retaining Rod
10	1	922516*	Rod Wiper
11	1	922095	Cylinder Rod
12	1	922096	Piston
13	1	922517*	Poly-Pak Seal
14	1	922097	Cylinder Gland

NOTE: Seal Kit #922098 includes all parts marked with an asterisk (*). Parts are not sold separately.

7395
4-27-98

CYLINDER ASSEMBLY

BUCKET CYLINDER ASSEMBLY #922039



CYLINDER ASSEMBLY

BUCKET CYLINDER ASSEMBLY #922039

NO	REQ'D	PART NO.	DESCRIPTION
1	2	922033	Bushing
2	1	922509	Hex Nut
3	1	922510*	Teflon Piston Ring
4	1	922419*	O'Ring
5	1	922511*	O'Ring
6	1	922518	Cylinder Tube
7	1	922513*	O'Ring
8	1	922514*	Back-Up Ring
9	1	922515*	Gland Retaining Rod
10	1	922519*	Rod Wiper
11	1	922100	Cylinder Rod
12	1	922101	Piston
13	1	922520*	Poly-Pak Seal
14	1	922102	Cylinder Gland

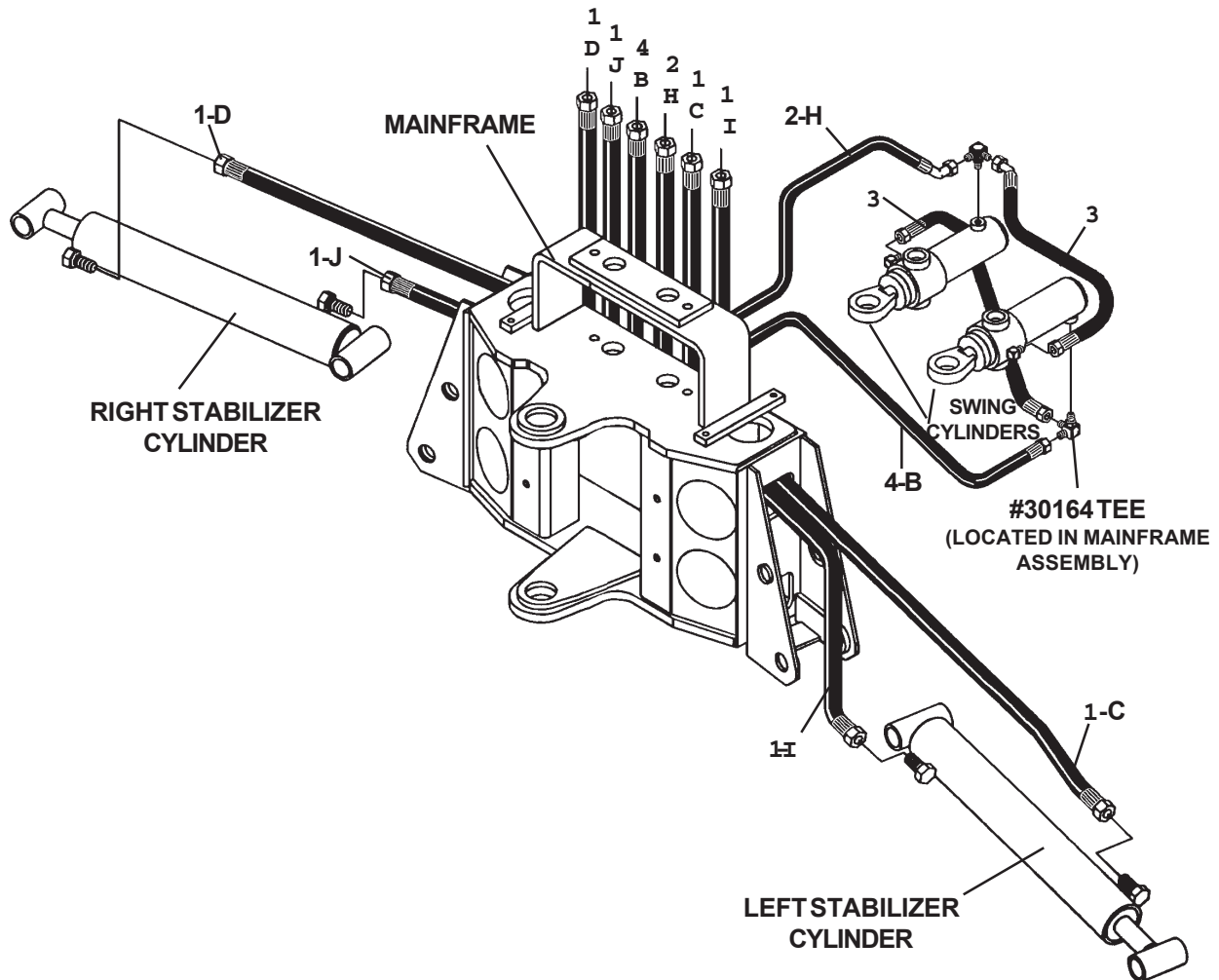
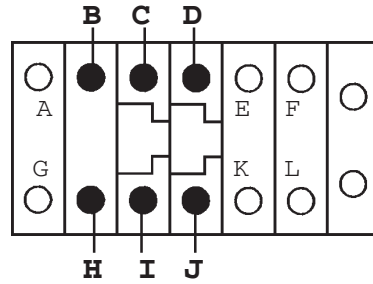
NOTE: Seal Kit #922103 includes all parts marked with an asterisk (*). Parts are not sold separately.

7397
4-27-98

MAINFRAME HOSE SET

ASSEMBLY #922105

HYDRAULIC CONTROL VALVE



MAINFRAME HOSE SET

ASSEMBLY #922105

NO	REQ'D	PART NO.	DESCRIPTION
1	4	922242	Hose Assembly .25" X 56" 6FJX-6FJX
2	1	922433	Hose Assembly .25" X 12" 6FJX-6FJX 45° Gooseneck
3	2	922434	Hose Assembly .25" X 14.50" 6FJX-6FJX
4	1	922435	Hose Assembly .25" X 17" 6FJX-6FJX

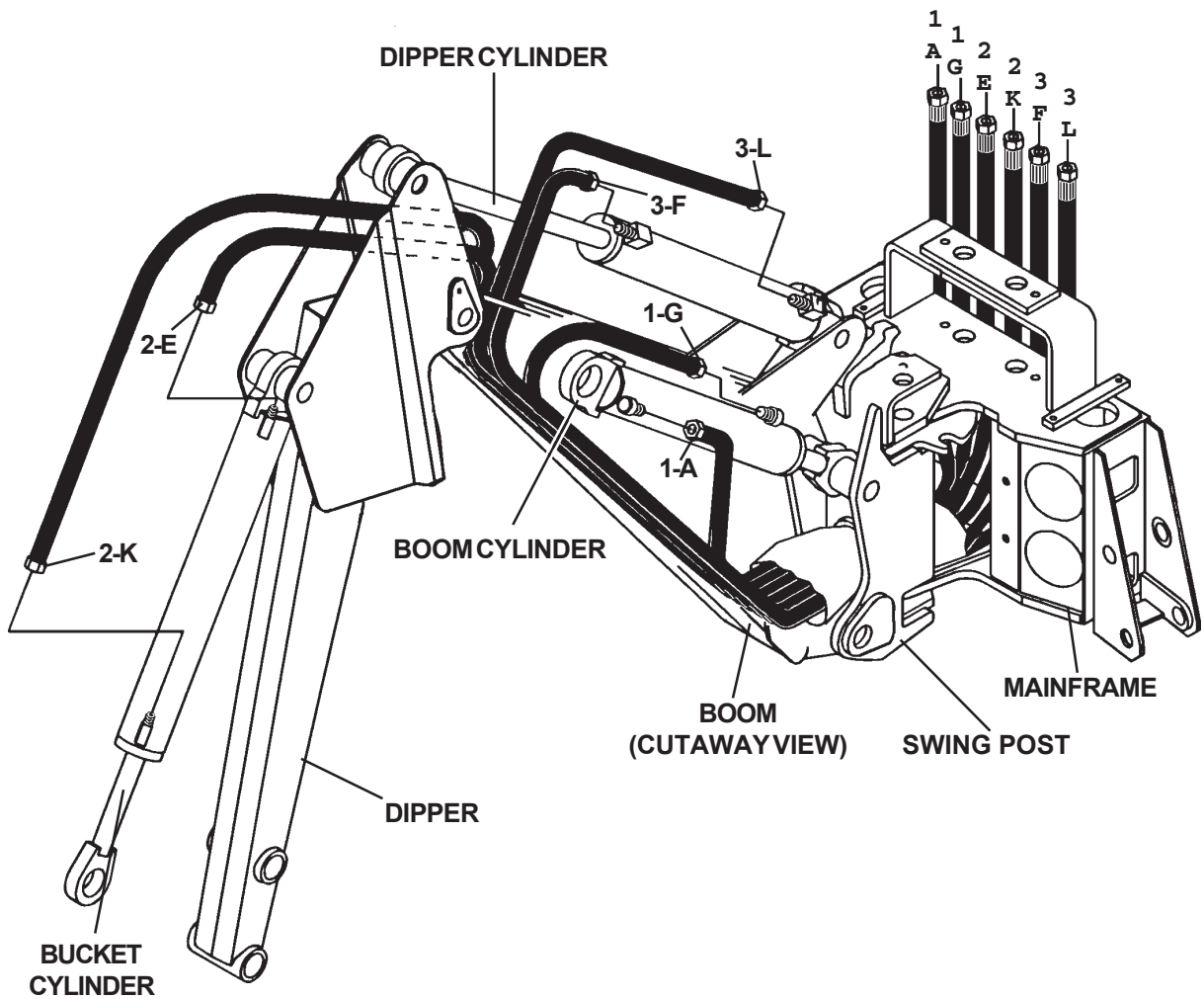
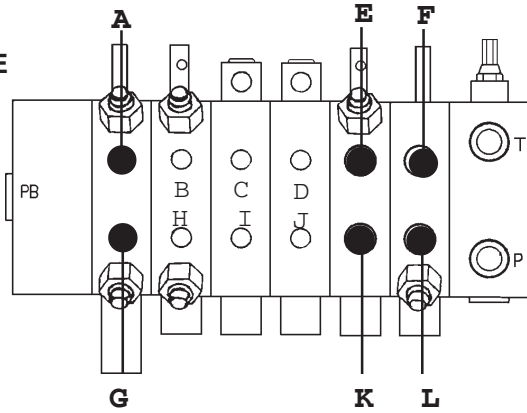
NOTE: Letters on the hose set diagram show the hydraulic hose routing between the backhoe control valve and the various hydraulic cylinders. Simply match the letter on the control valve port to the same letter on the hydraulic hose ends. Example: Hose Assembly labeled "C" runs from the upper Left Stabilizer port on the hydraulic control valve - through the mainframe and to the barrel end fitting on the left stabilizer cylinder.

NOTE: The fittings on the hydraulic cylinders have been altered for clarity purposes. This will assist you in distinguishing between the rod end and the barrel end of the various hydraulic cylinders.

BOOM & DIPPER HOSE SET

ASSEMBLY #922106

HYDRAULIC CONTROL VALVE



BOOM & DIPPER HOSE SET

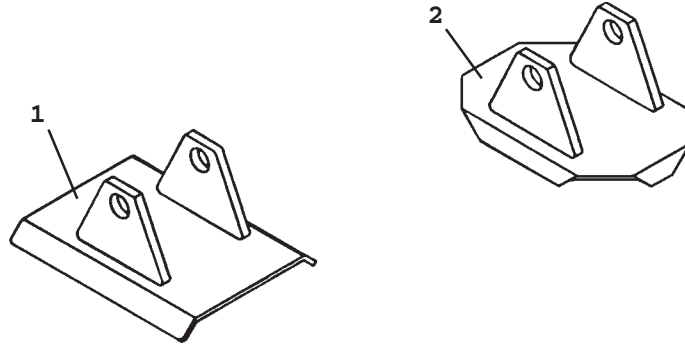
ASSEMBLY #922106

NO	REQ'D	PART NO.	DESCRIPTION
1	2	922261	Hose Assembly .38" X 95" 6FJX-6FJX
2	2	922250	Hose Assembly .38" X 139.50" 6FJX-6FJX
3	2	922245	Hose Assembly .38" X 137" 6FJX-6FJX

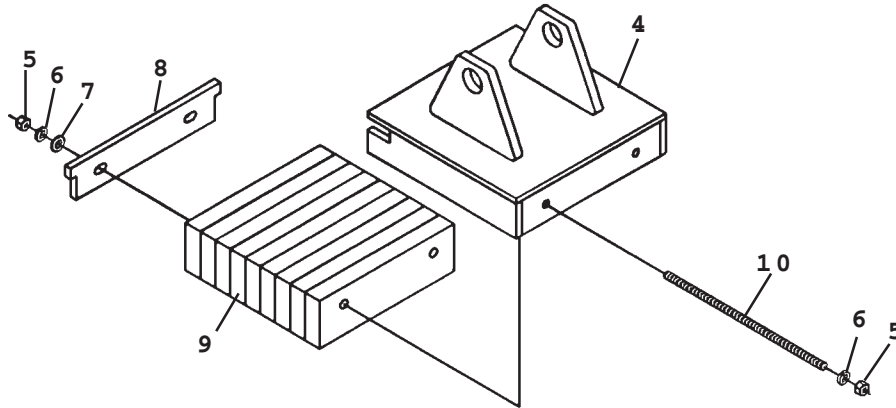
NOTE: Letters on the hose set diagram show the hydraulic hose routing between the backhoe control valve and the various hydraulic cylinders. Simply match the letter on the control valve port to the same letter on the hydraulic hose ends. Example: Hose Assembly labeled "G" runs from the lower Boom port on the hydraulic control valve - through the mainframe and swing post and to the rod end of the boom cylinder.

NOTE: The fittings on the hydraulic cylinders have been altered for clarity purposes. This will assist you in distinguishing between the rod end and the barrel end of the various hydraulic cylinders.

STABILIZER PADS



3

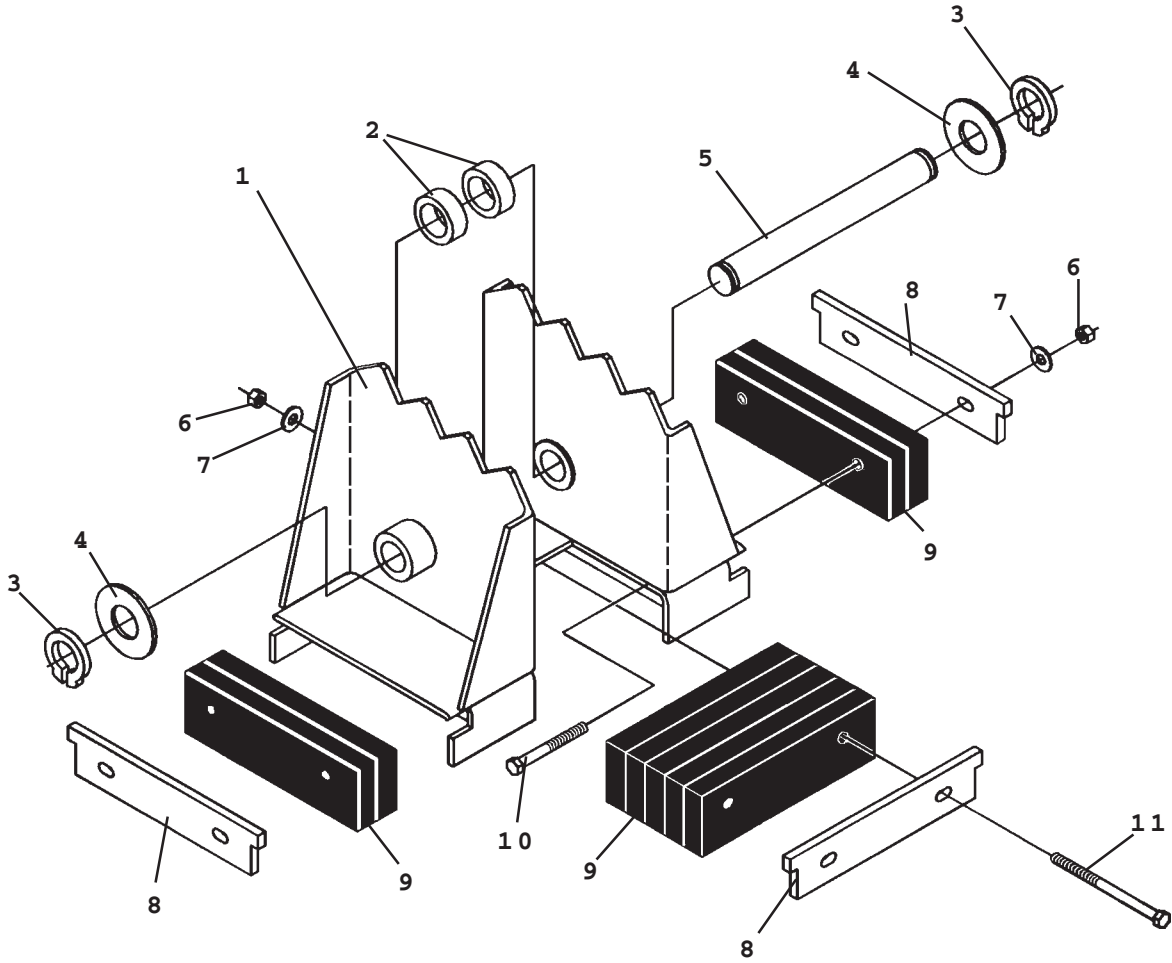


STABILIZER PADS

NO	REQ'D	PART NO.	DESCRIPTION
FLAT STABILIZER PAD ASSEMBLY - #920116			
1	2	920116A	Flat Stabilizer Pad
GROUSER STABILIZER PAD ASSEMBLY - #920115			
2	1	920115	Grouser Stabilizer Pad
RUBBER STABILIZER PAD ASSEMBLY - #920117			
3	2	920117A	Rubber Stabilizer Pad Assembly (Includes Items 4 through 10)
4	1	922444	Stabilizer Pad
5	4	922300	.38" UNC Hex Nut
6	4	922277	.38" Lock Washer
7	2	922273	.38" Flat Washer
8	1	922445	Slide Plate
9	1	922446	Rubber Strip Bundle
10	2	922447	.38" UNC X 11.50" Read Bolt

STABILIZER PADS

FLIP-OVER STABILIZER PAD ASSEMBLY #922453



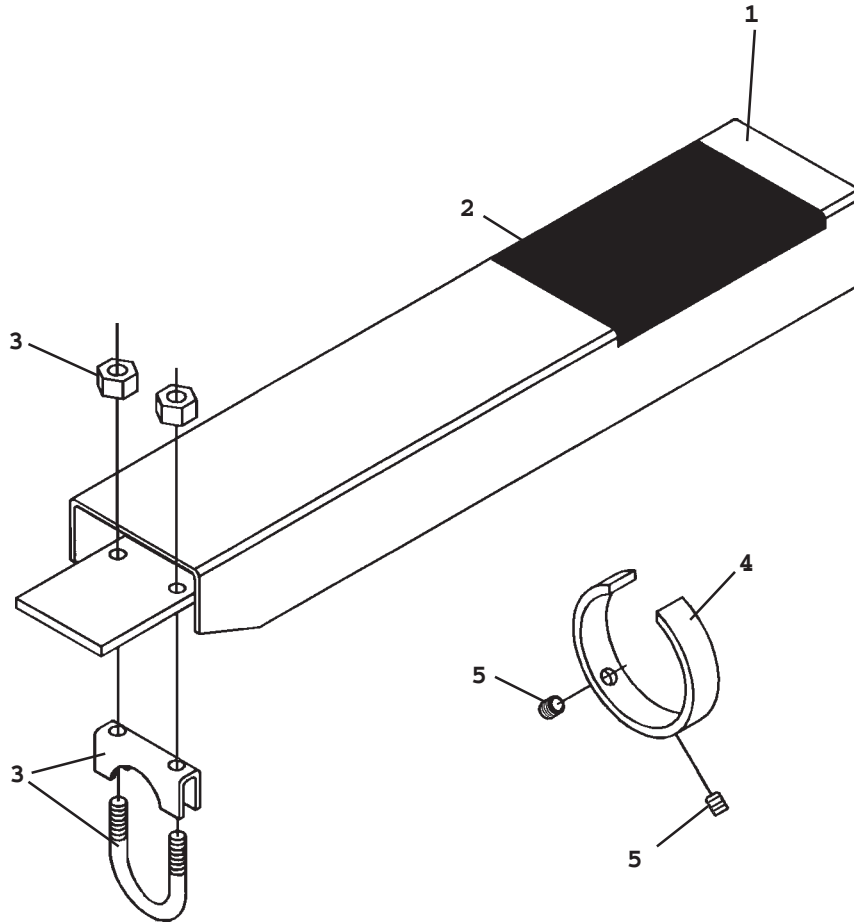
STABILIZER PADS

FLIP-OVER STABILIZER PAD ASSEMBLY #922453

NO	REQ'D	PART NO.	DESCRIPTION
1	1	922448	Flip-Over Pad
2	2	922449	Spacer
3	2	922284	1.25" Snap Ring
4	VARIABLES	922266	Thrust Washer 1.25" X .078"
	VARIABLES	922194	Thrust Washer 1.25" X .125"
5	1	922450	Pin
6	6	922283	.38" UNC Hex Deformed Lock Nut
7	6	922273	.38" Flat Washer
8	3	922445	Slide Plate
9	1	922446	Rubber Strip Bundle
10	4	922451	.38" UNC X 3.50" Hex Capscrew
11	2	922452	.38" UNC X 5.00" Hex Capscrew

OPTIONAL STABILIZER CYLINDER COVER

STABILIZER CYLINDER COVER ASSEMBLY #920169



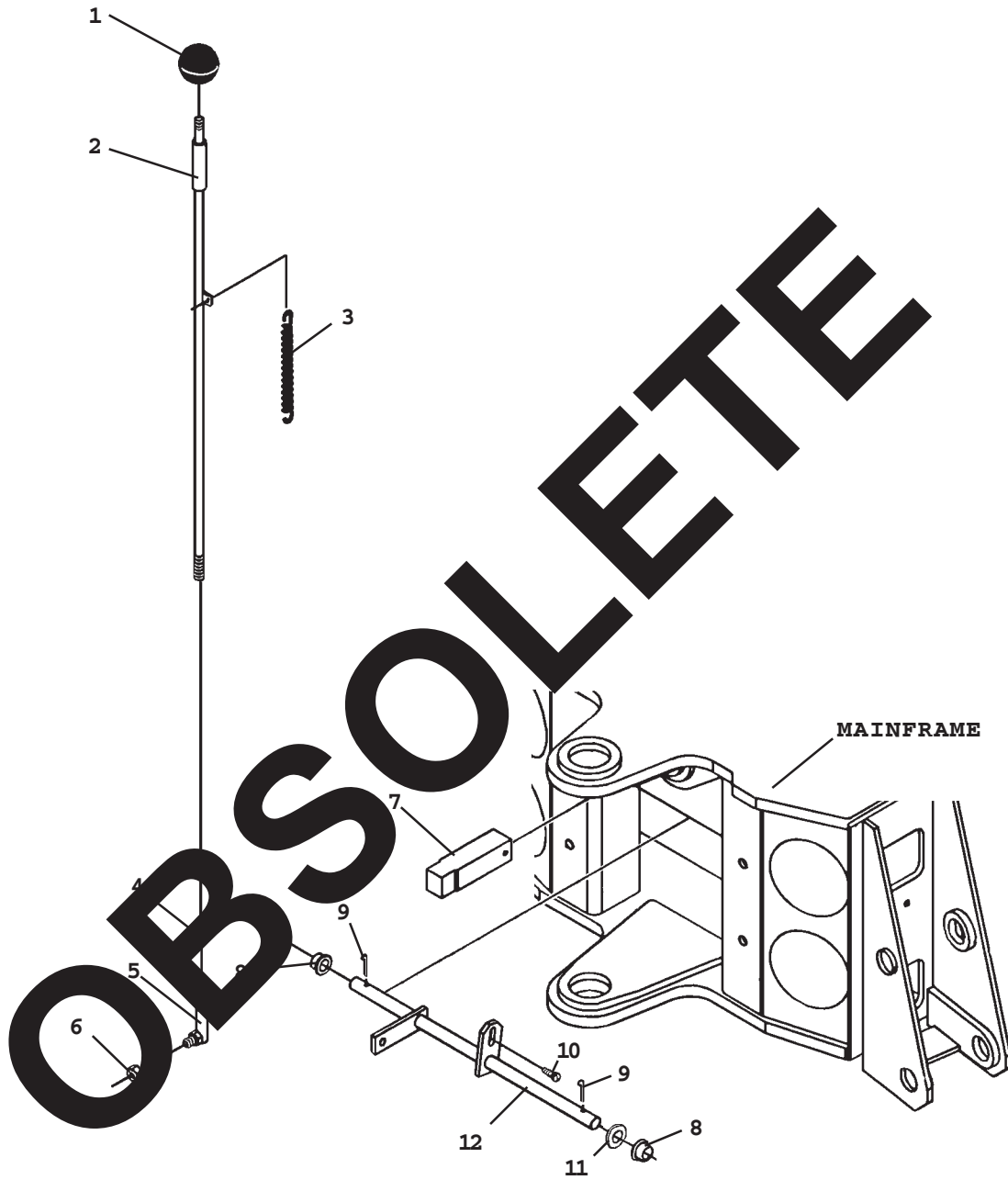
OPTIONAL STABILIZER CYLINDER COVER

STABILIZER CYLINDER COVER ASSEMBLY #920169

NO	REQ'D	PART NO.	DESCRIPTION
1	2	920169	Stabilizer Cylinder Cover with Decal

SWING LOCK ASSEMBLY

ASSEMBLY #922485



SWING LOCK ASSEMBLY

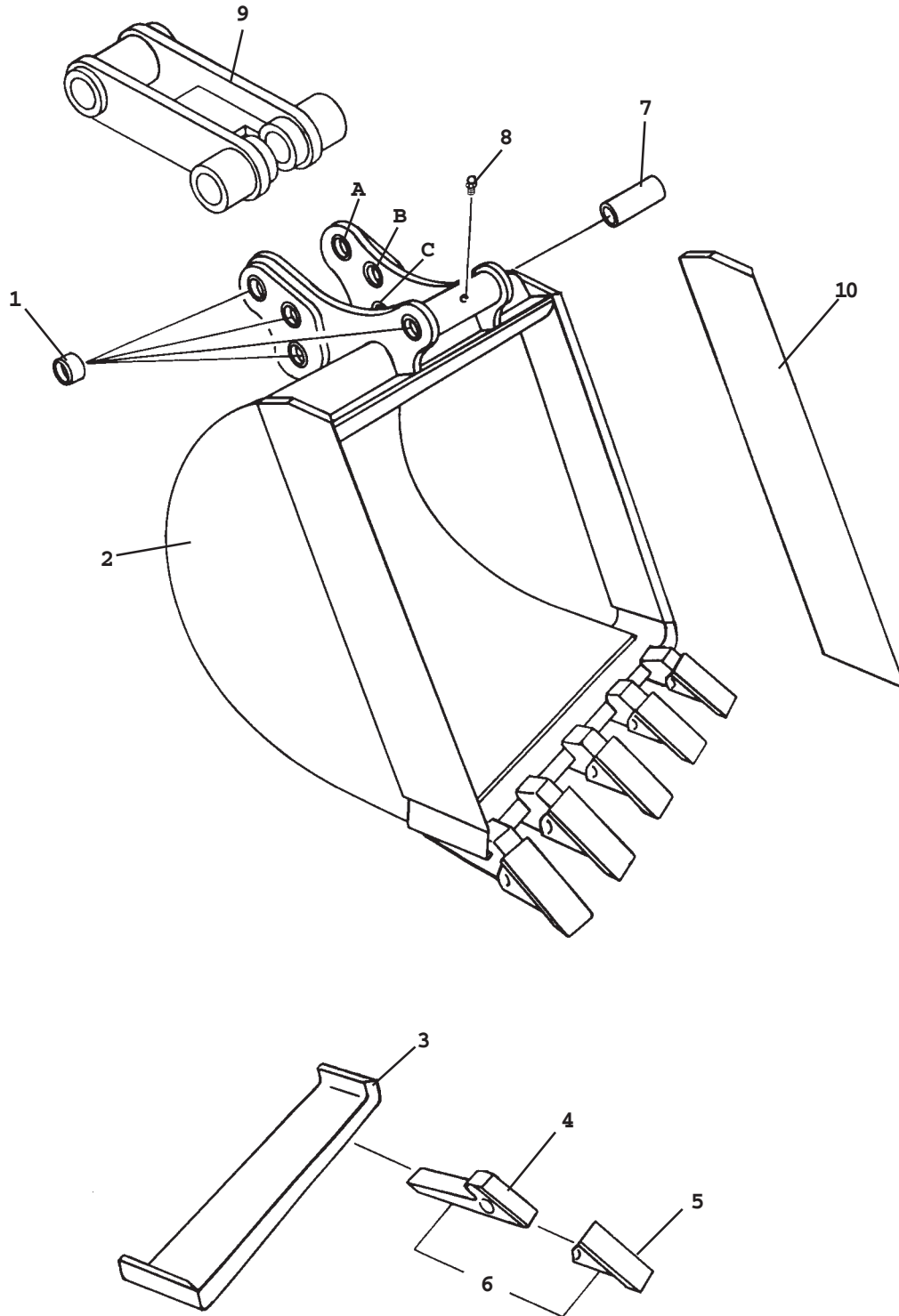
ASSEMBLY #922485

NO	REQ'D	PART NO.	DESCRIPTION
1	1	922343	Ball Handle
2	1	922344	Swing Lock Rod
3	1	922345	Spring
4	1	922350	.38" UNF Jam Nut
5	1	922351	Ball Joint
6	1	922352	.38" UNF Lock Nut
7	1	922285	Swing Lock Pin
8	2	922288	Bushing
9	2	922289	Cotter Pin
10	1	922291	Shoulder Screw
11	2	922522	Spacer
12	1	922523	Linkage

OBSOLETE

BUCKET ASSEMBLIES

POWER DIG BUCKETS



BUCKET ASSEMBLIES

POWER DIG BUCKETS

NO	REQ'D	PART NO.	DESCRIPTION
1	8	922524	Bushing
2	1	920131	12" Bucket Weldment
		920132	16" Bucket Weldment
		920133	18" Bucket Weldment
		920134	20" Bucket Weldment
		920135	24" Bucket Weldment
3	1	922530	12" Replacement Front Cutter Edge
		922531	16" Replacement Front Cutter Edge
		922522	18" Replacement Front Cutter Edge
		922533	20" Replacement Front Cutter Edge
		922534	24" Replacement Front Cutter Edge
4	Varies	922535	Replacement Tooth Shank
5	Varies	922536	Replacement Tooth Point
6	Varies	922537	Replacement Tooth Point and Shank Assembly
7	1	922538	Spacer
8	1	922274	Grease Zerk
9	Optional	922539	Bell Hole Bucket Link (Requires 3 Grease Zerks - Part #6616)
10	1	922540	Left Replacement Side Cutter
	1	922541	Right Replacement Side Cutter

NOTE:

Power dig buckets have three different bucket link positions for different digging needs.

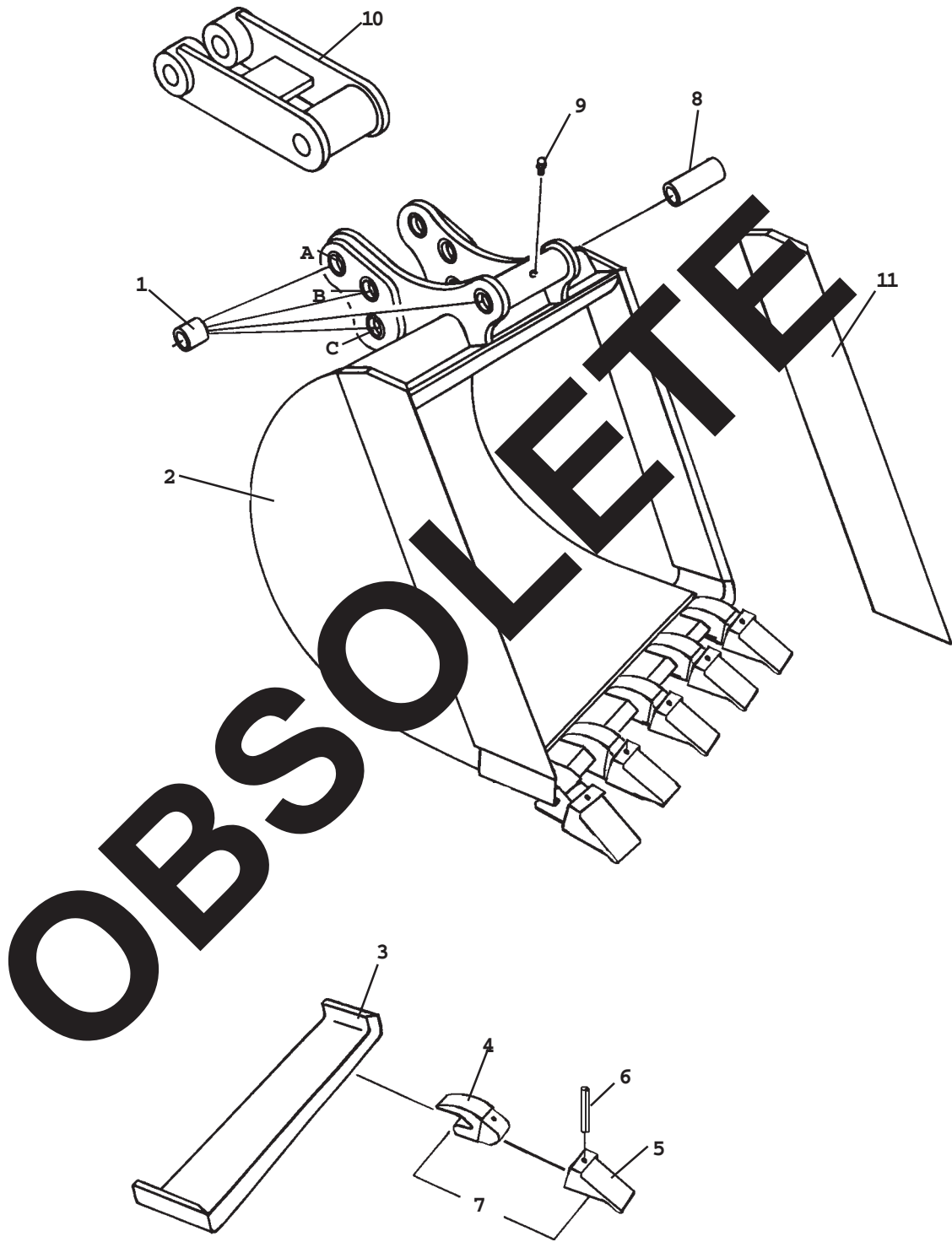
Position "A" power digging position for added digging force in hard ground.

Position "B" truck loading position for greater ease of spoil removal and higher dump height.

Position "C" standard digging position with a good balance of digging force and bucket rotation for general digging use.

BUCKET ASSEMBLIES

SEVERE DUTY BUCKETS



BUCKET ASSEMBLIES

SEVERE DUTY BUCKETS

NO	REQ'D	PART NO.	DESCRIPTION
1	8	922542	Bushing (MD2 Series Backhoes)
	8	922524	Bushing (HD, 500 & 600 Series Backhoes)
2	1	922543	12" Bucket Weldment
		922544	16" Bucket Weldment
		922545	18" Bucket Weldment
		922546	20" Bucket Weldment
		922547	24" Bucket Weldment
3	1	922548	12" Replacement Front Cutter Edge
		922549	16" Replacement Front Cutter Edge
		922550	18" Replacement Front Cutter Edge
		922551	20" Replacement Front Cutter Edge
		922552	24" Replacement Front Cutter Edge
4	Varies	922553	Replacement Tooth Shank (Weld On)
5	Varies	922554	Replacement Tooth (Bolt On)
6	Varies	922555	Central Roll Pin
7	Varies	922556	Replacement Tooth Point and Shank Assy
8	1	922531	Spacer
9	1	922274	Grease Zerk
10	Position	922554	8.5" Bell Hole Bucket Link (Requires 3 Grease Zerks #922274)
		922540	Left Replacement Side Cutter
	1	922541	Right Replacement Side Cutter

NOTE:

Severe duty buckets have three different bucket link positions for different digging needs.

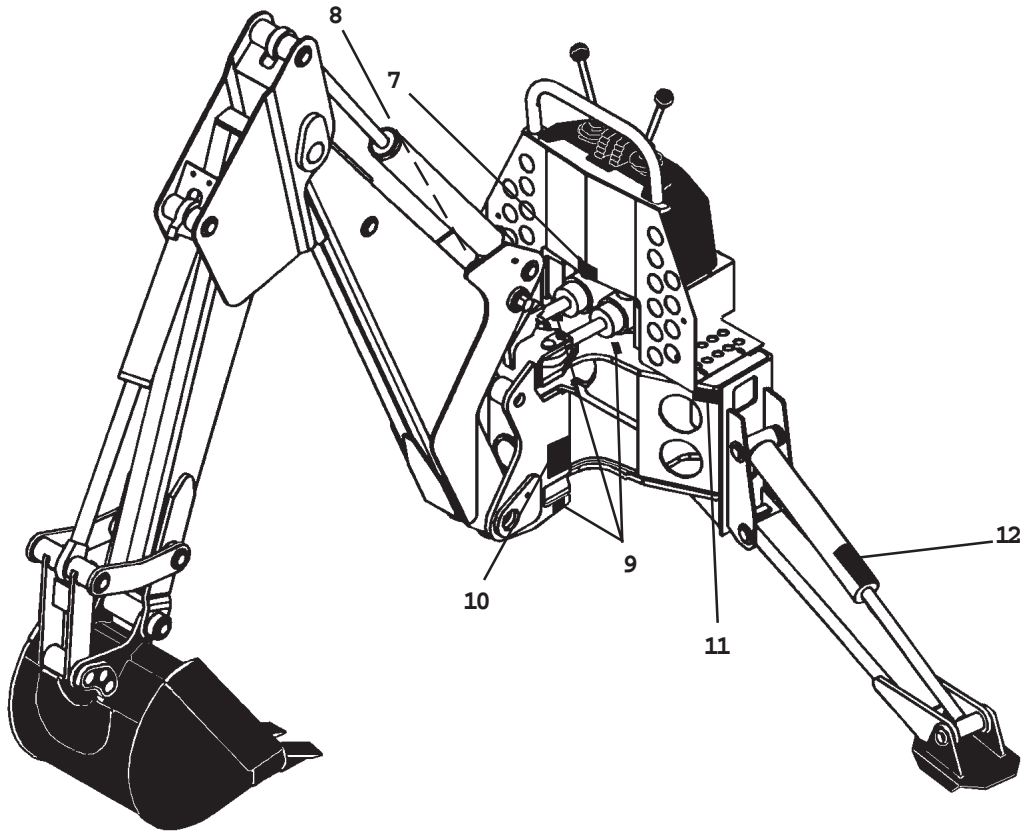
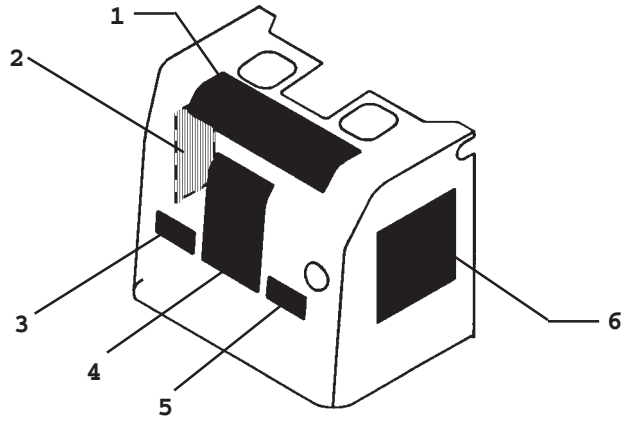
Position "A" digging position for added digging force in hard ground.

Position "B" truck loading position for greater ease of spoil removal and higher dump height.

Position "C" standard digging position with a good balance of digging force and bucket rotation for general digging use.

DECAL ASSEMBLY

509A DECAL ASSEMBLY #922199

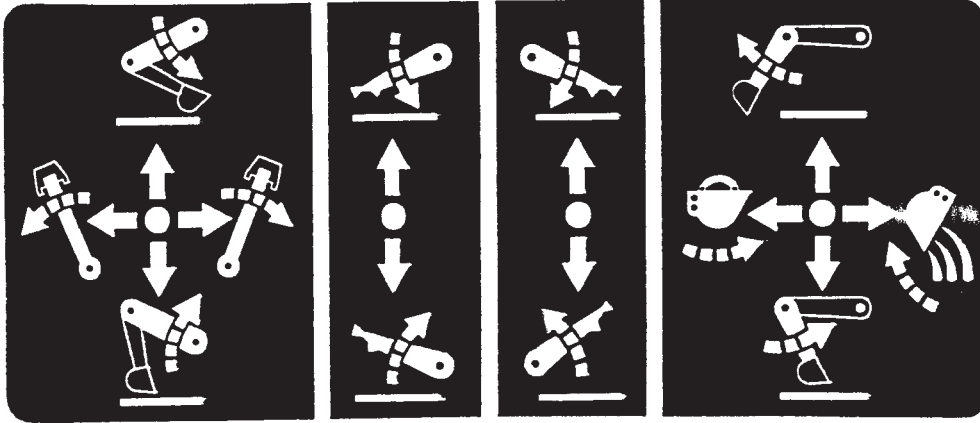


DECAL ASSEMBLY

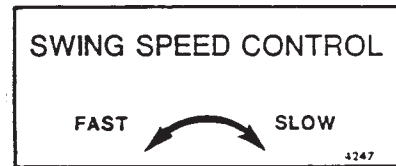
509A DECAL ASSEMBLY #922199

NO	REQ'D	PART NO.	DESCRIPTION
1	1	922200	Operating Controls Decal
2	1	922201	Important Decal
3	1	922202	Swing Speed Decal
4	1	922203	Operational Warning Decal
5	1	922204	Petcock Operation Decal
6	1	922205	High Pressure Fluid Decal
7	1	922470	Made In U.S.A.
8	1	922471	Boom Lock Decal
9	5	922472	Grease 8 Hour Decal
10	2	922206	Danger! Pinch Point Decal
11	1	922473	ATI Serial No. Tag
12	2	922474	Bucket Contact Warning Decal

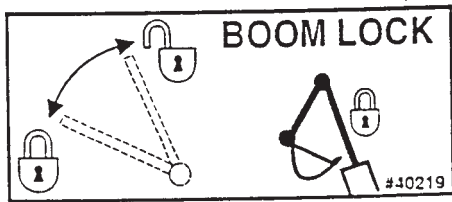
DECAL ASSEMBLY



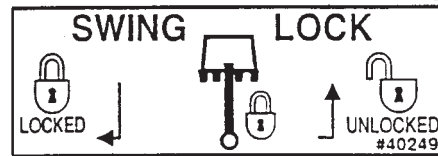
PART # 922200
OPERATING CONTROLS DECAL



PART # 922202
SWING SPEED CONTROL DECAL



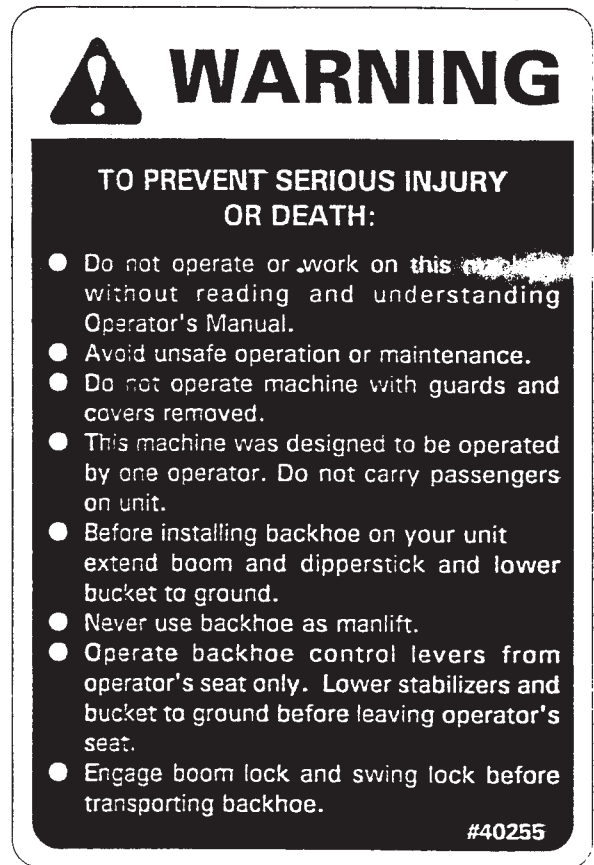
PART #922471
BOOM LOCK DECAL



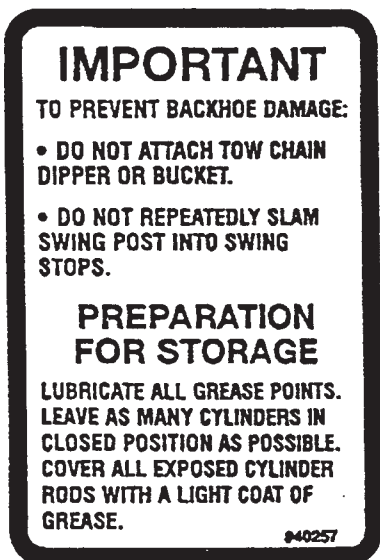
PART #922469
SWING LOCK DECAL



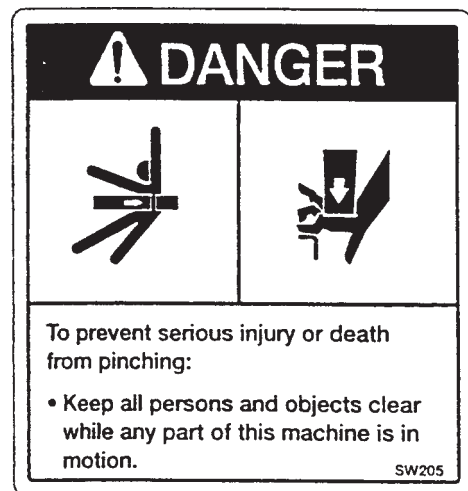
PART #922205
HIGH PRESSURE FLUID DECAL



PART #922203
OPERATIONAL WARNING DECAL



PART #922201
IMPORTANT! DECAL



PART #922206
DANGER! PINCH POINTS

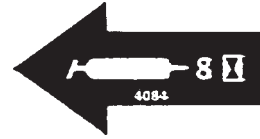
DECAL ASSEMBLY

IMPORTANT

The backhoe bucket is capable of contacting this stabilizer and/or cylinder. Carefull operation will avoid backhoe damage.

4140

PART # 922474
BUCKET CONTACT WARNING DECAL



PART # 922472
GREASE 8 HOURS



PART # 922473
ATISERIALNUMBER TAG



PART # 922470
MADE IN U.S.A. DECAL

