

CONTRACTOR

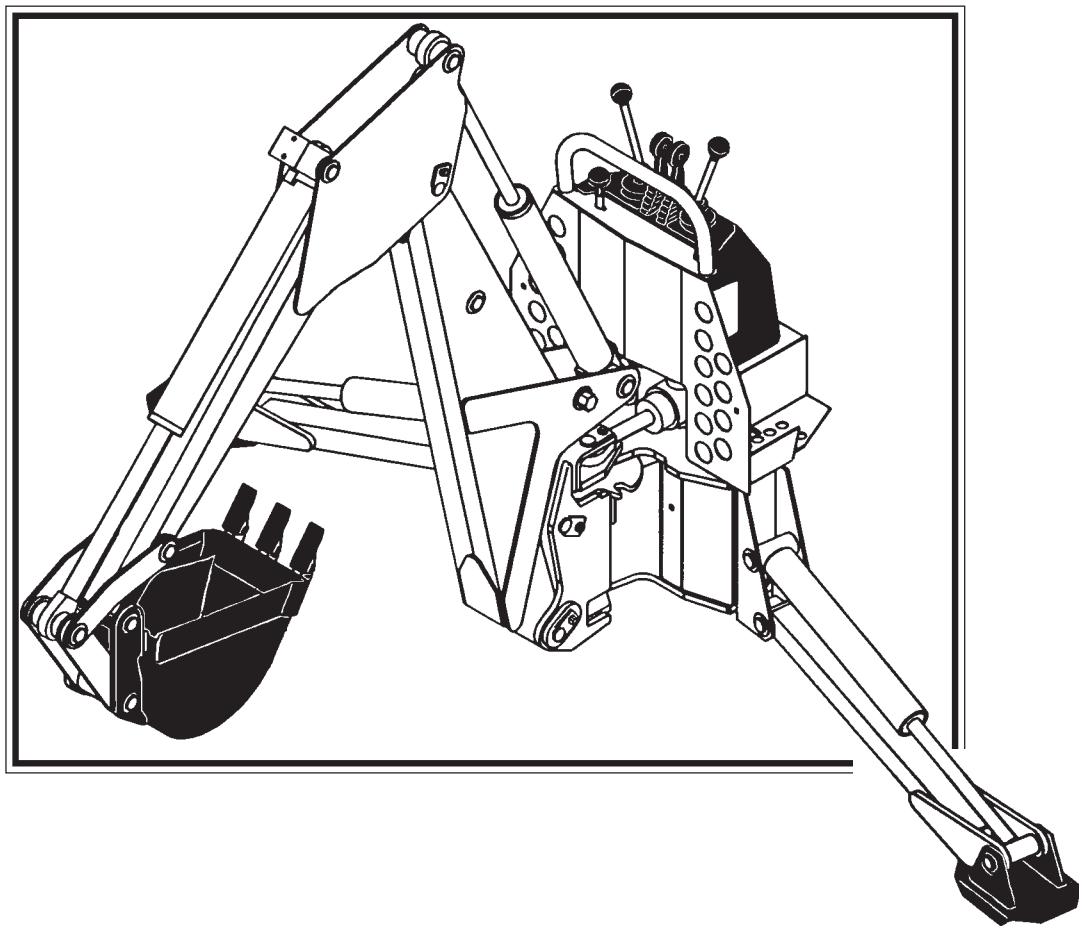
408A BACKHOE

Rev. 6

OM408

6737

1/11/00



OPERATOR'S & PARTS MANUAL

75449

ALLMAND BROS. INC.
P.O. Box 888 · HOLDREGE, NE USA
(308) 995-4495 · (800) 562-1373
Fax 308-995-5887

TABLE OF CONTENTS

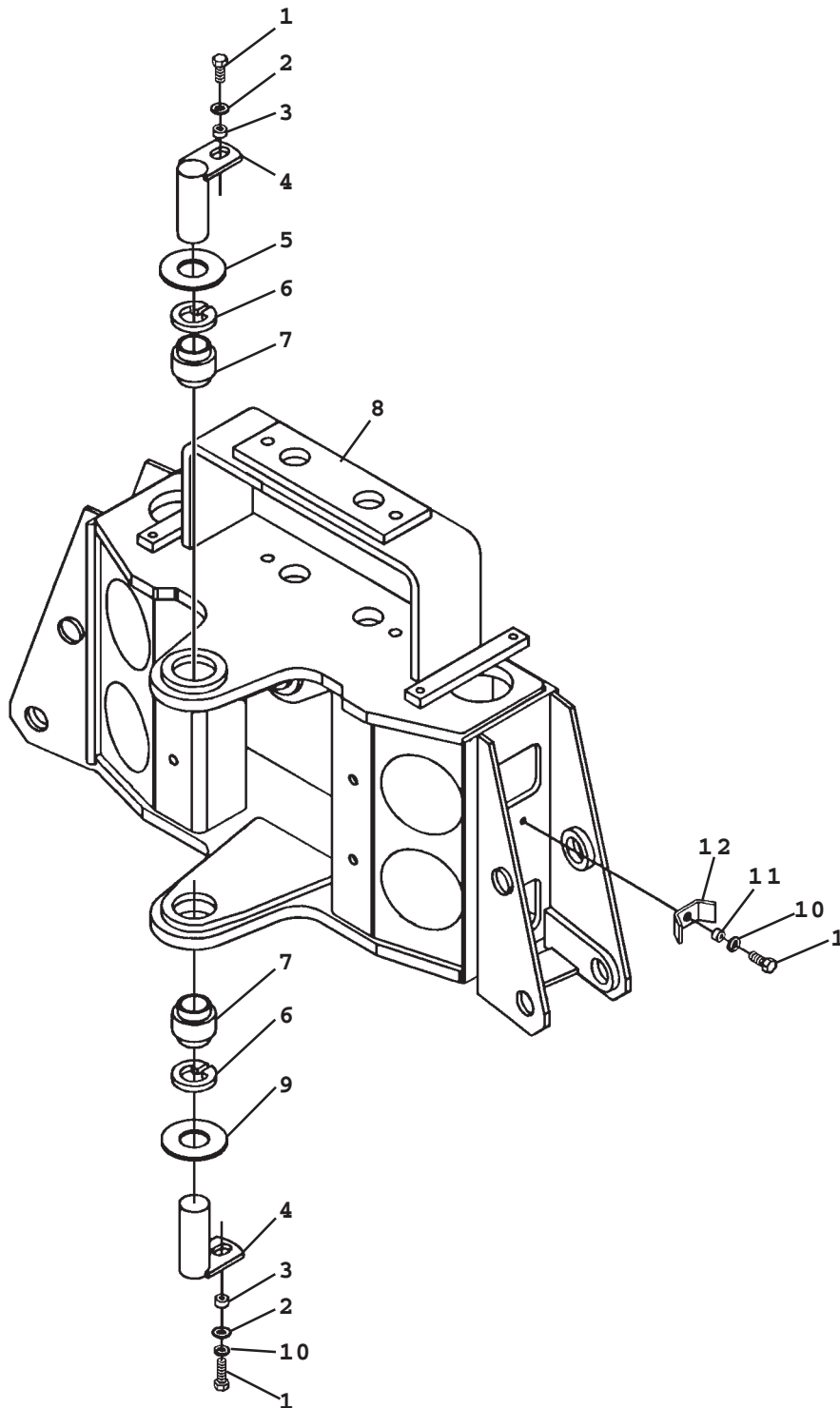
SERVICE PARTS

MAINFRAME ASSEMBLY	SN #8408AX973 AND UP	#922475
	UP TO SN #8408AX972	#922476
Mainframe		
Swing Post		
Swing Cylinder		
Stabilizers		
Hose Bundle		
SEAT		#922001
BOOM & DIPPER ASSEMBLY	SN #8408AX973 AND UP	#922477
	UP TO SN #8408AX972	#922478
Boom		
Dipper		
CONSOLE ASSEMBLY	HIDROIRMA VALVE	#922479
VALVE ASSEMBLY	HIDROIRMA VALVE	#922267
CONSOLE ASSEMBLY	GRESEN VALVE	#922480
VALVE ASSEMBLY	GRESEN VALVE	#922267
CYLINDERS		
SWING CYLINDER		#922070
STABILIZER CYLINDER		#922076
BOOM CYLINDER	SN #8408AX973 AND UP	#922153
	UP TO SN #8408AX972	#922187
DIPPER CYLINDER	SN #8408AX973 AND UP	#922293
	UP TO SN #8408AX972	#922188
BUCKET CYLINDER	SN #8408AX973 AND UP	#922164
	UP TO SN #8408AX972	#922190
HOSE SETS		
MAINFRAME HOSE SET		#922105
BOOM & DIPPER HOSE SET	HIDROIRMA VALVE	#922107
	GRESEN VALVE	#922104
STABILIZER PAD OPTIONS		
FLAT STABILIZER PAD ASSEMBLY		#920116
GROUSER STABILIZER PAD ASSEMBLY		#920115
RUBBER STABILIZER PAD ASSEMBLY		#920117
BUCKET OPTIONS		
10" BUCKET		#920102
12" BUCKET		#920103
16" BUCKET		#920104
18" BUCKET		#920105
24" BUCKET		#920106
FIRST LINE REPAIR KIT		#922467
DECALS		#922198

MAINFRAME ASSEMBLY

ASSEMBLY #922475
MAINFRAME

SERIAL #8408AX973 AND UP



MAINFRAME ASSEMBLY

ASSEMBLY #922475

MAINFRAME

SERIAL #8408AX973 AND UP

NO	REQ'D	PART NO.	DESCRIPTION
1	4	922272	.38" UNC X 1.00" Hex Capscrew (Two pin retaining capscrews installed with Locktite Grade 242)
2	2	922273	.38" Flat Washer
3	2	922109	Spacer Tube
4	2	920113	Pin
	2	922274	Grease Zerk
5	1	922271	Thrust Washer 1.38" X .125"
6	2	922275	Snap Ring
7	2	920114	Bearing
8	1	922227	Mainframe (Includes (4)#83815 Bushings - Installed with Locktite Grade 680)
9	As Req'd	922220	Thrust Washer 1.38" X .031"
	As Req'd	922221	Thrust Washer 1.38" X .090"
	As Req'd	922271	Thrust Washer 1.38" X .125"
10	3	922277	.38" Lock Washer
11	2	922228	Spacer
12	2	922229	Hose Clamp

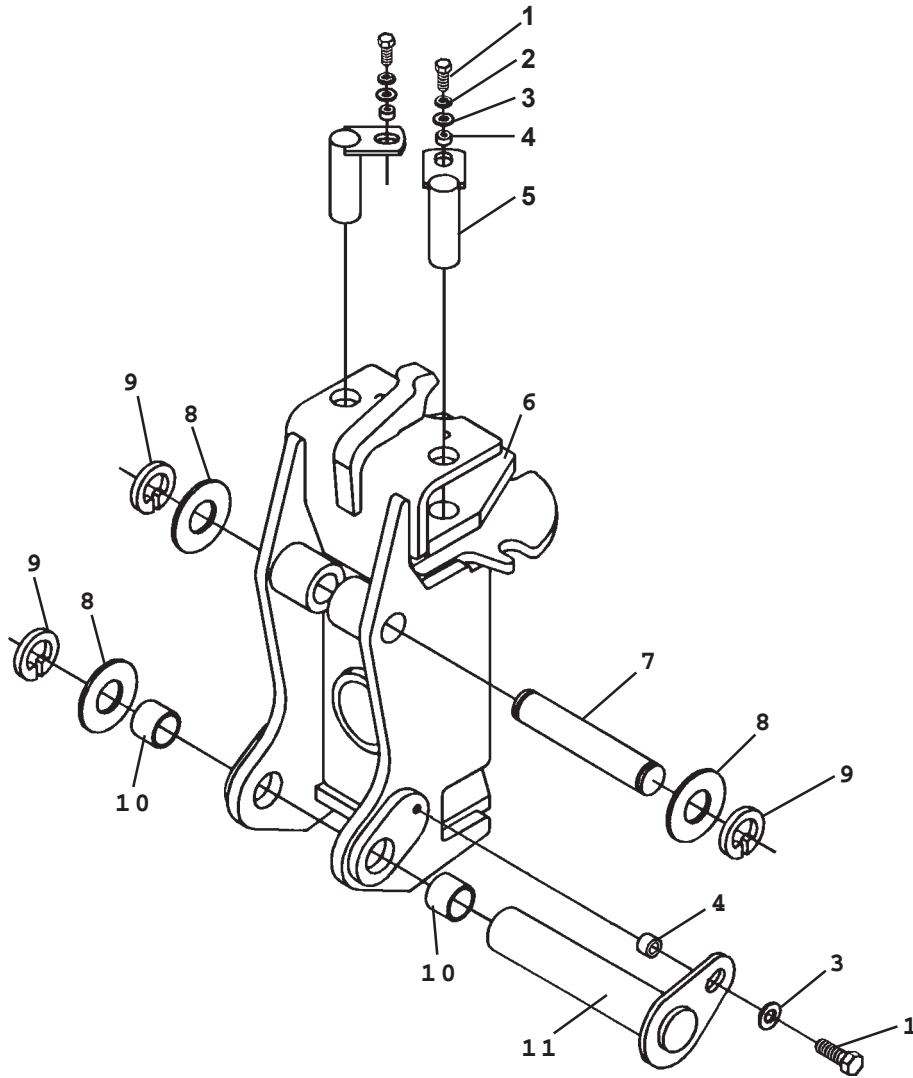
NOTE: Use thrust washers (Item #9) to adjust mainframe / swing post to minimum free play.

7460
6-5-98

MAINFRAME ASSEMBLY

ASSEMBLY #922475
SWINGPOST

SERIAL #8408AX973 AND UP



MAINFRAME ASSEMBLY

ASSEMBLY #922475
SWING POST

SERIAL #8408AX973 AND UP

NO	REQ'D	PART NO.	DESCRIPTION
1	3	922272	.38" UNC X 1.00" Hex Capscrew (Installed with Locktite Grade 242)
2	2	922277	.38" Lock Washer
3	3	922273	.38" Flat Washer
4	3	922109	Spacer Tube
5	2	922027	Pin
6	1	922278	Swing Post (Includes (2) 81828 Bushings Installed with Locktite Grade 680)
7	1	922108	Pin
8	As Req'd	922220 (1)	Thrust Washer 1.38" X .031"
	As Req'd	922221	Thrust Washer 1.38" X .090"
	As Req'd	922271	Thrust Washer 1.38" X .125"
9	3	922110	Snap Ring
10	-	922045	Bushing (Included in Swing Post) (Installed with Locktite Grade 680)
11	1	922111	Pin
	1	922274	Grease Zerk

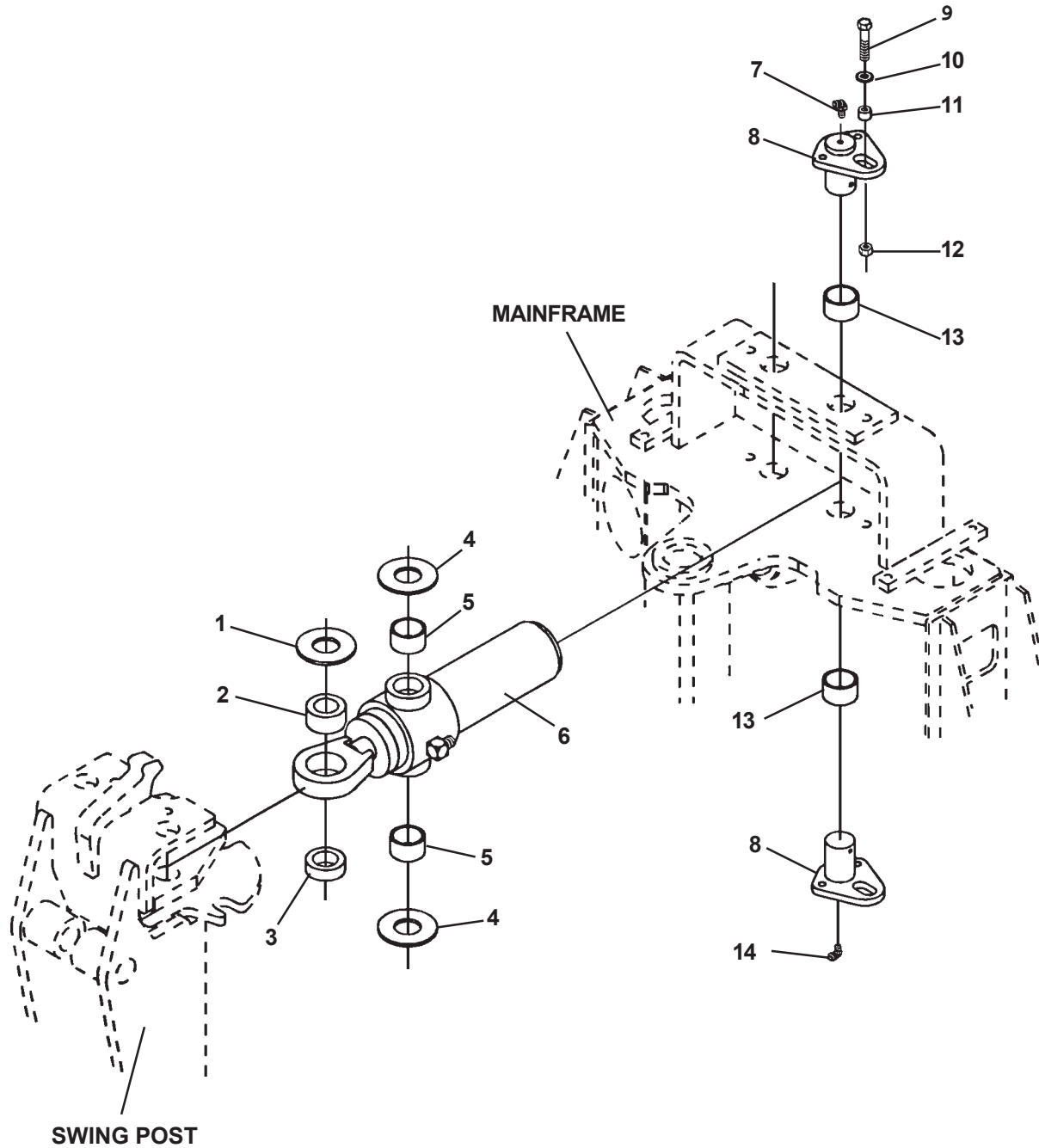
NOTE:

(1) Pivot Pin #922108 is sold only in Pin Kit #86309. Kit includes one pin #922108, two thrust washers #922260 and two snap rings #922110.

MAINFRAME ASSEMBLY

ASSEMBLY #922475
SWING CYLINDER

SERIAL #8408AX973 AND UP



MAINFRAME ASSEMBLY

ASSEMBLY #922475
SWING CYLINDER

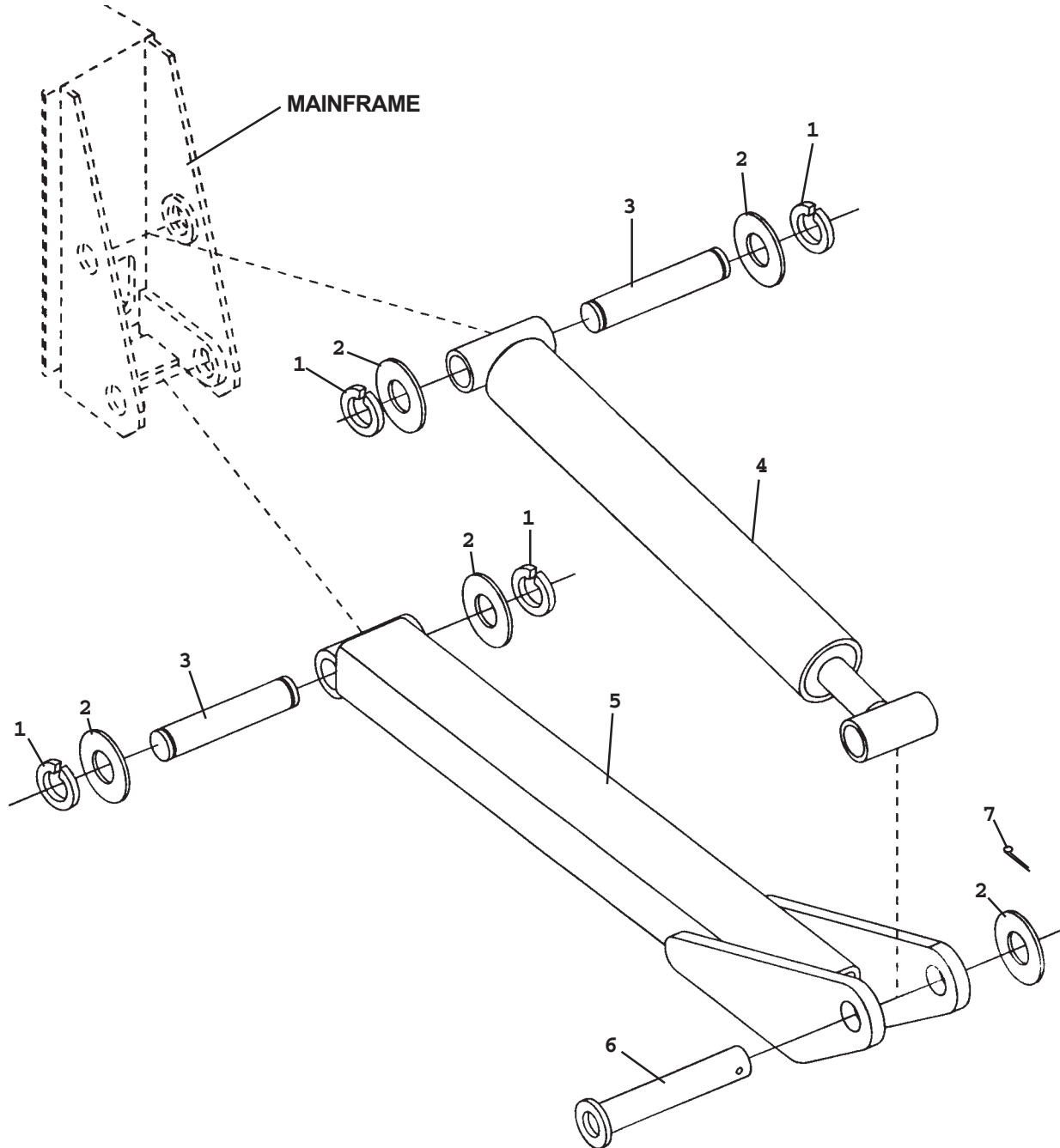
SERIAL #8408AX973 AND UP

NO	REQ'D	PART NO.	DESCRIPTION
1	As Req'd	922266	Thrust Washer 1.25" X .078"
	As Req'd	922194	Thrust Washer 1.25" X .145"
	As Req'd	922279	Thrust Washer 1.25" X .031"
2	-	922081	Self Aligning Bushing (Included in Swing Cylinder Assembly)
3	2	922218	Spacer
4	4	922226	Thrust Washer
5	-	922029	Needle Bearing (Included in Swing Cylinder Assembly)
6	2	922070	Swing Cylinder Assembly (Includes (2) #82441 Needle Bearings and (2) #62523 Bushings)
	2	922274	Grease Zerk
	2	922280	LH Lateral Tee
7	2	922281	90° Grease Zerk
8	4	922028	Pin
9	4	922282	.38" UNC X 2.00" Hex Capscrew
10	4	922273	.38" Flat Washer
11	4	922225	Spacer Tube
12	4	922283	.38" UNC Hex Lock Nut
13	-	922113	Bushing (Included in Mainframe - Installed with Locktite Grade 680)
14	2	922281	90° Grease Zerk

MAINFRAME ASSEMBLY

ASSEMBLY #922475
STABILIZERS

SERIAL #8408AX973 AND UP



MAINFRAME ASSEMBLY

ASSEMBLY #922475
STABILIZERS

SERIAL #8408AX973 AND UP

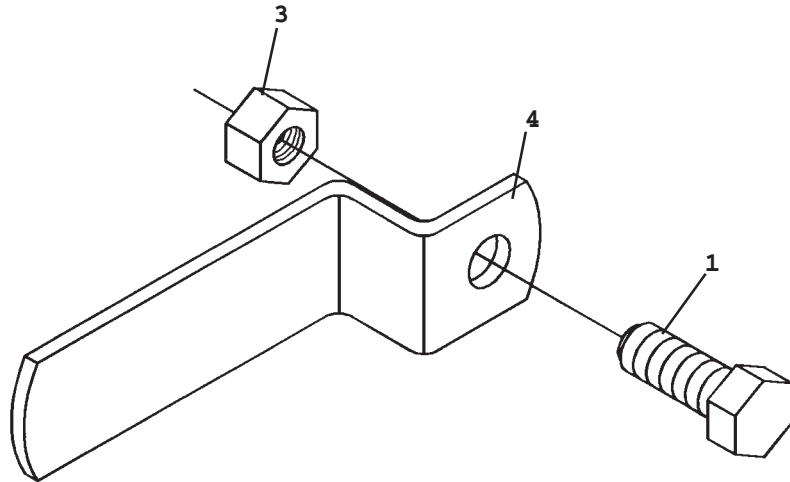
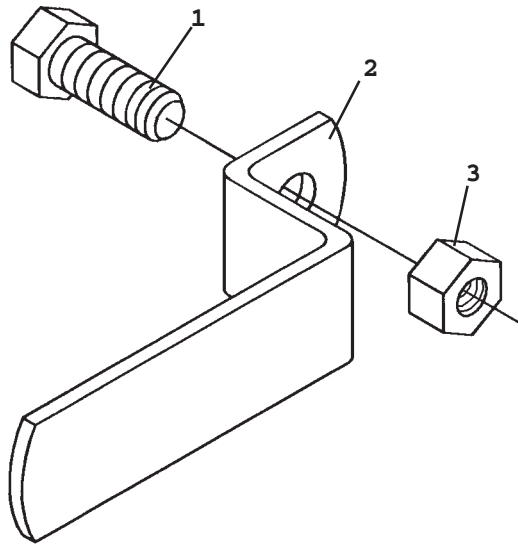
NO	REQ'D	PART NO.	DESCRIPTION
1	8	922284	Snap Ring
2	As Req'd	922266	Thrust Washer 1.25" X .078"
	As Req'd	922194	Thrust Washer 1.25" X .145"
	As Req'd	922279	Thrust Washer 1.25" X .031"
3	4	922030 (1)	Pin
4	2	922076	Stabilizer Cylinder Assembly
	4	922274	Grease Zerk
5	2	922186	Stabilizer Arm
6	2	922031	Pin
7	2	922270	Cotter Pin .25" X 2.00"

NOTE:

(1) Pivot Pin #922030 is sold only in Pin Kit #86314. Kit includes one pin #922030, two thrust washers #922194 and two snap rings #922284.

7466
6-8-98

HOSE BUNDLE CLAMPS



HOSE BUNDLE CLAMPS

UP TO SERIAL #---10065

NO	REQ'D	PART NO.	DESCRIPTION
1	2	922272	.38" UNC X 1.00" Hex Capscrew
2	1	922240	Right Hose Bundle Clamp
3	2	922283	.38" UNC Deformed Lock Nut
4	1	922241	Left Hose Bundle Clamp

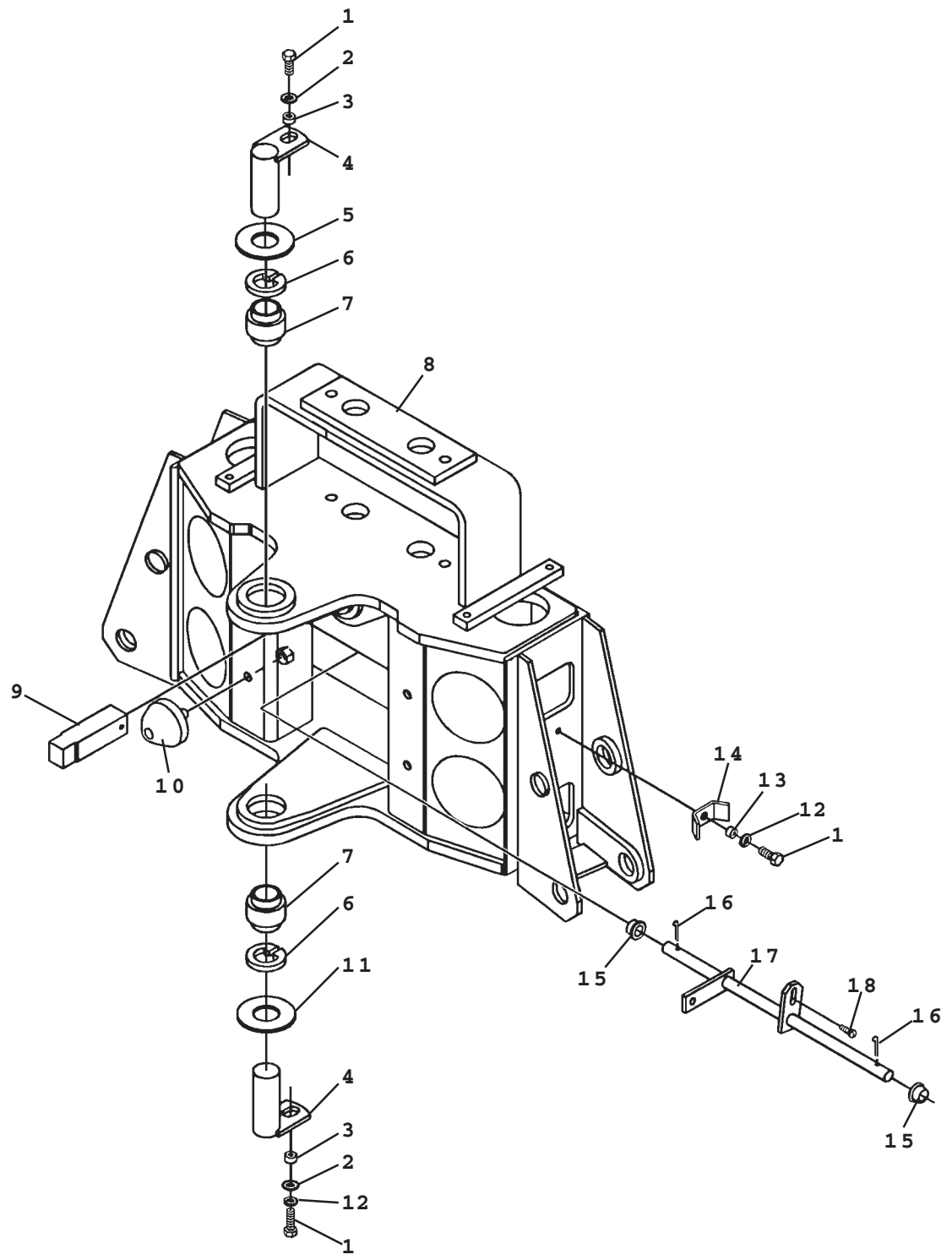
SERIAL #---10065 AND UP

NO	REQ'D	PART NO.	DESCRIPTION
1	2	922272	.38" UNC X 1.00" Hex Capscrew
2	1	922241	Right Hose Bundle Clamp
3	2	922283	.38" UNC Deformed Lock Nut
4	1	922241	Left Hose Bundle Clamp

MAINFRAME ASSEMBLY

ASSEMBLY #922476
MAINFRAME

UP TO SERIAL #8408AX972



MAINFRAME ASSEMBLY

ASSEMBLY #922476
MAINFRAME

UP TO SERIAL #8408AX972

NO	REQ'D	PART NO.	DESCRIPTION
1	4	922272	.38" UNC X 1.00" Hex Capscrew (Two pin retaining capscrews installed with Locktite Grade 242)
2	2	922273	.38" Flat Washer
3	2	922109	Spacer Tube
4	2	920113	Pin
	2	922274	Grease Zerk
5	1	922271	Thrust Washer 1.38" X .125"
6	2	922275	Snap Ring
7	2	920114	Bearing
8	1	922227	Mainframe (Includes (4) #922113 Bushings - Installed with Locktite Grade 680)
9	1	922285	Swing Lock Pin
10	4	922286	Rubber Bumper
	4	922287	.50" UNC Lock Nut
11	As Req'd	922220	Thrust Washer 1.38" X .031"
	As Req'd	922221	Thrust Washer 1.38" X .090"
	As Req'd	922271	Thrust Washer 1.38" X .125"
12	3	922277	.38" Lock Washer
13	2	922228	Spacer
14	2	922229	Hose Clamp
15	2	922288	Bushing
16	2	922289	Cotter Pin .12 X 1.00"
17	1	922290	Linkage
18	1	922291	Shoulder Screw

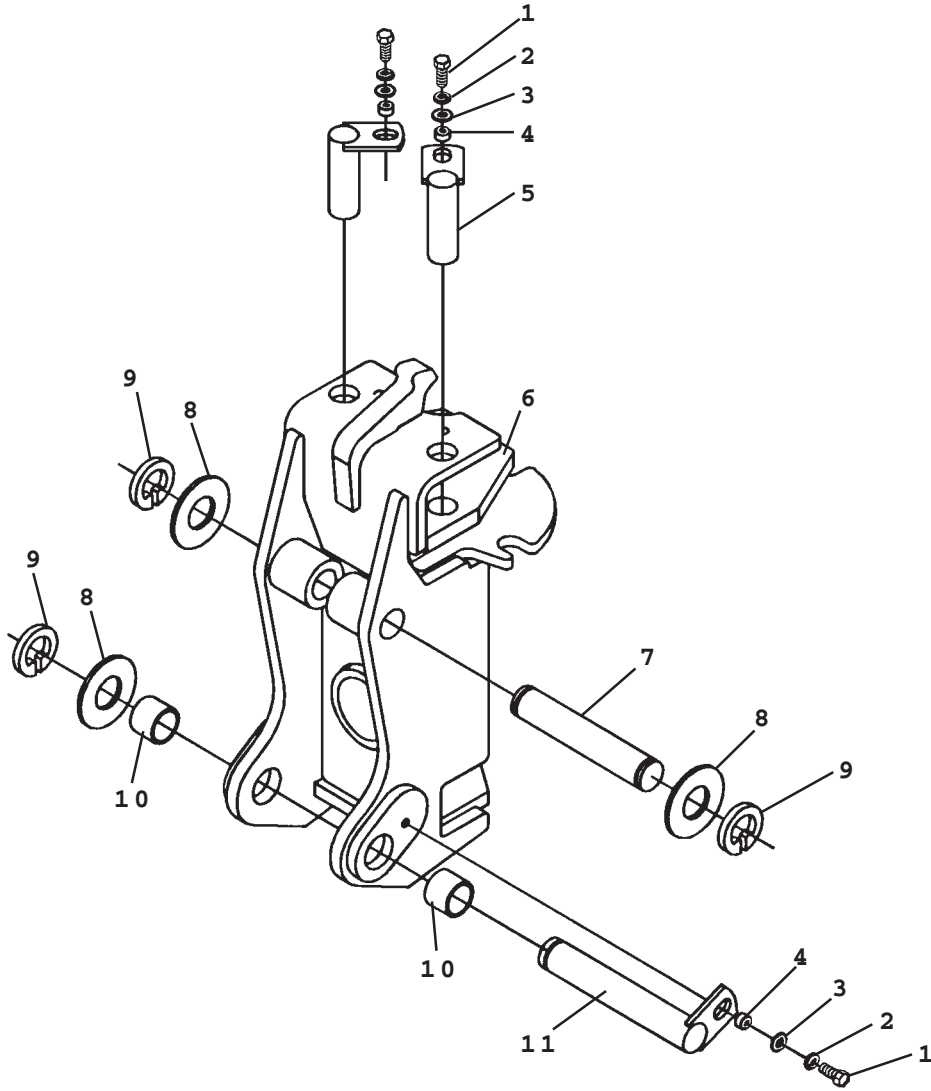
NOTE: Use thrust washers (Item #11) to adjust mainframe / swing post to minimum free play.

6721
6-5-98-4

MAINFRAME ASSEMBLY

ASSEMBLY #922476
SWINGPOST

UP TO SERIAL #8408AX972



MAINFRAME ASSEMBLY

ASSEMBLY #922476
SWINGPOST

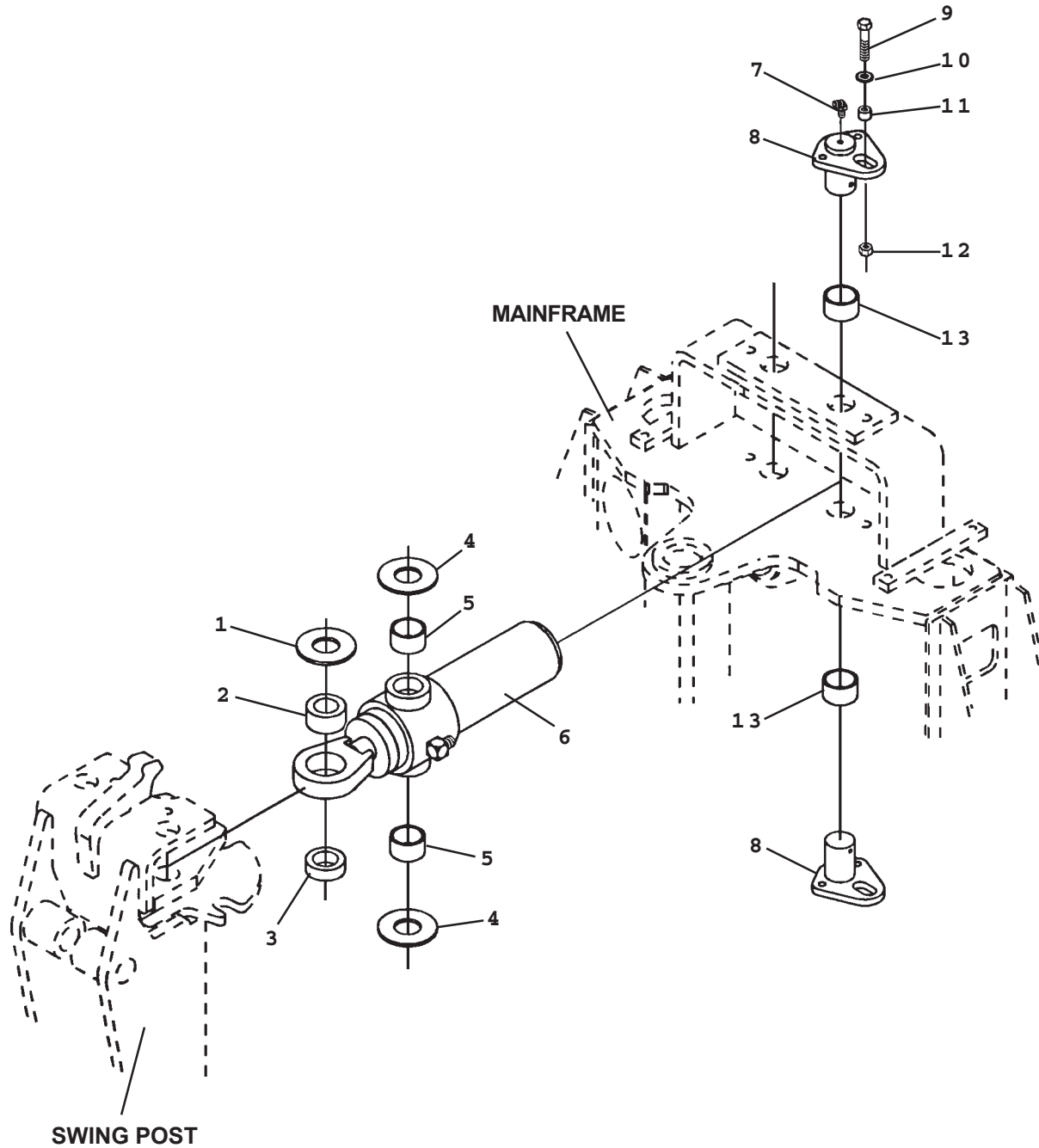
UP TO SERIAL #8408AX972

NO	REQ'D	PART NO.	DESCRIPTION
1	3	922272	.38" UNC X 1.00" Hex Capscrew (Installed with Locktite Grade 242)
2	3	922277	.38" Lock Washer
3	3	922273	.38" Flat Washer
4	3	922109	Spacer Tube
5	2	922027	Pin
6	1	922222	Swing Post (Includes (2) 81828 Bushings Installed with Locktite Grade 680)
7	1	922108	Pin
8	As Req'd	922260	Thrust Washer 1.38" X .031"
	As Req'd	922193	Thrust Washer 1.38" X .090"
	As Req'd	922192	Thrust Washer 1.38" X .125"
9	3	922110	Snap Ring
10	-	922045	Bushing (Included in Swing Post) (Installed with Locktite Grade 680)
11	1	922214	Pin

MAINFRAME ASSEMBLY

ASSEMBLY #922476
SWING CYLINDER

UP TO SERIAL #8408AX972



MAINFRAME ASSEMBLY

ASSEMBLY #922476
SWING CYLINDER

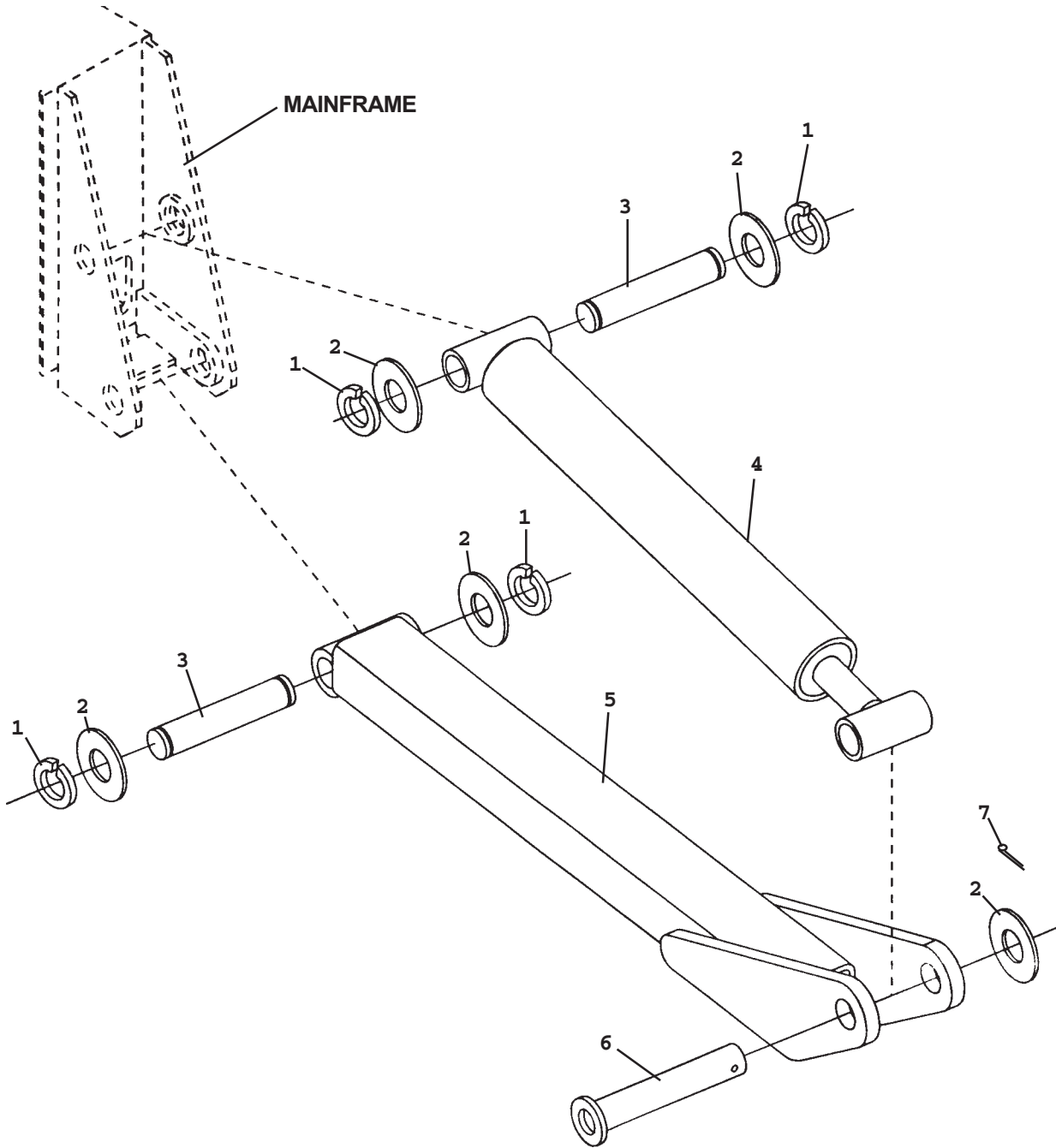
UP TO SERIAL #8408AX972

NO	REQ'D	PART NO.	DESCRIPTION
1	2	922219	1.25" Flat Washer
2	-	922081	Self Aligning Bushing (Included in Swing Cylinder Assembly)
3	2	922218	Spacer
4	4	922226	Thrust Washer
5	-	922029	Needle Bearing (Included in Swing Cylinder Assembly)
6	2	922070	Swing Cylinder Assembly (Includes (2) #82441 Needle Bearings and (2) #62523 Bushings)
	2	922274	Grease Zerk
	2	922292	Tee
7	4	922281	90° Grease Zerk
8	4	922028	Pin
9	4	922282	.38" UNC X 2.00" Hex Capscrew
10	4	922273	.38" Flat Washer
11	4	922225	Spacer Tube
12	4	922283	.38" UNC Hex Lock Nut
13	-	922113	Bushing (Included in Mainframe - Installed with Loctite Grade 680)

MAINFRAME ASSEMBLY

ASSEMBLY #922476
STABILIZERS

UP TO SERIAL #8408AX972



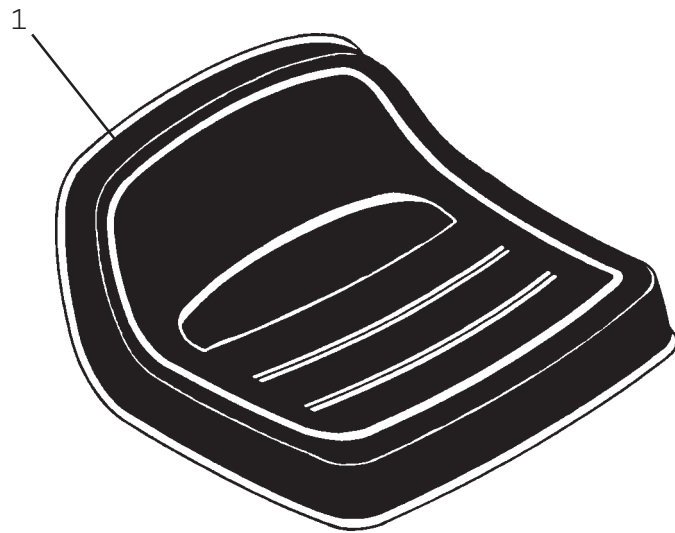
MAINFRAME ASSEMBLY

ASSEMBLY #922476
STABILIZERS

UP TO SERIAL #8408AX972

NO	REQ'D	PART NO.	DESCRIPTION
1	8	922284	Snap Ring
2	As Req'd	922266	Thrust Washer 1.25" X .078"
	As Req'd	922192	Thrust Washer 1.25" X .145"
	As Req'd	922279	Thrust Washer 1.25" X .031"
3	4	922030	Pin
4	2	922076	Stabilizer Cylinder Assembly
	4	922274	Grease Zerk
5	2	922186	Stabilizer Arm
6	2	922031	Pin
7	2	922270	Cotter Pin .25" X 2.00"

SEAT ASSEMBLY



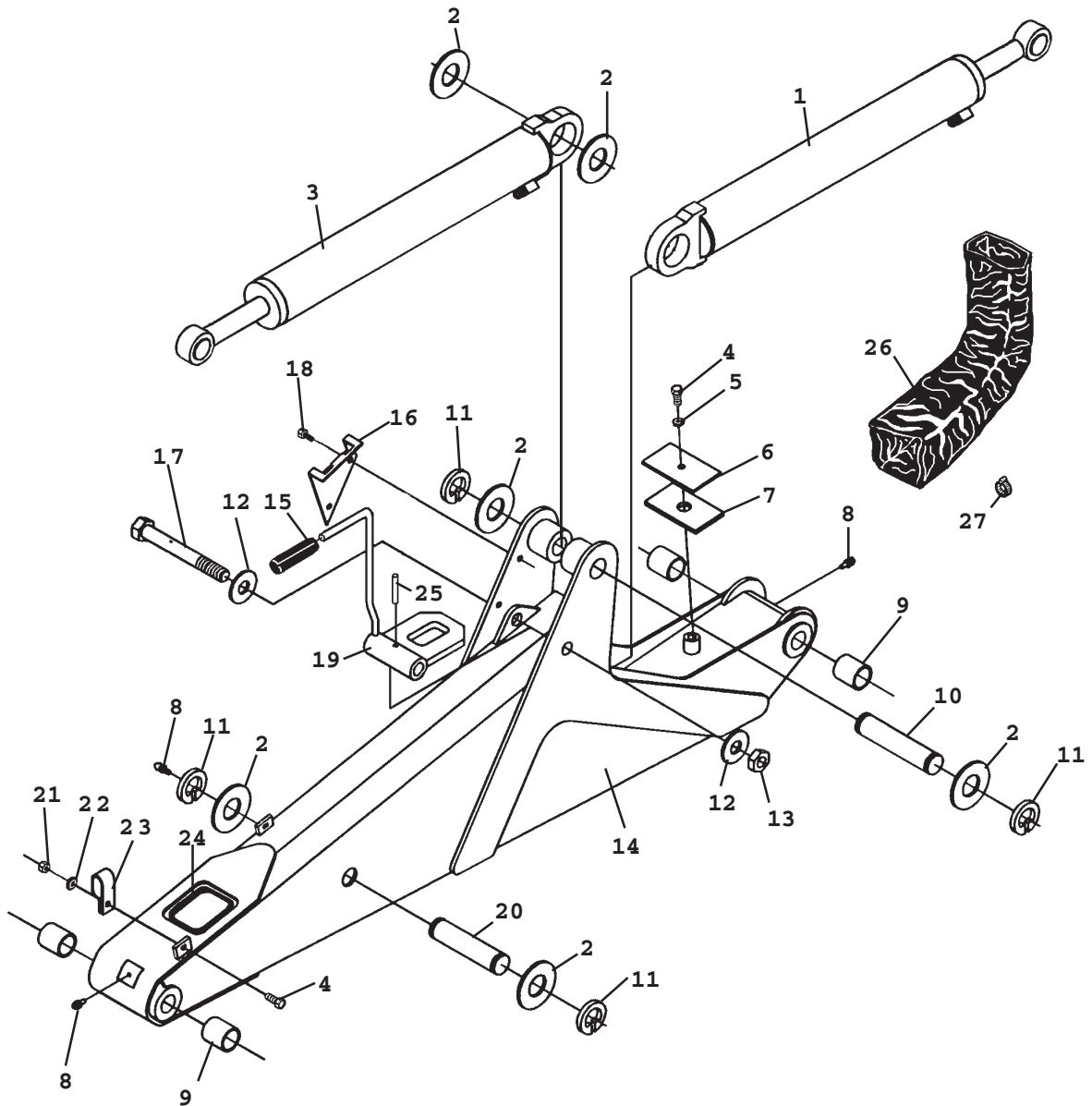
SEAT ASSEMBLY

NO	REQ'D	PART NO.	DESCRIPTION
1	1	922001	Seat
`1	1	920246	Seat (After S/N 9802T01)

BOOM & DIPPER ASSEMBLY

ASSEMBLY #922477

SERIAL #8408AX973 AND UP



BOOM & DIPPER ASSEMBLY

ASSEMBLY #922477

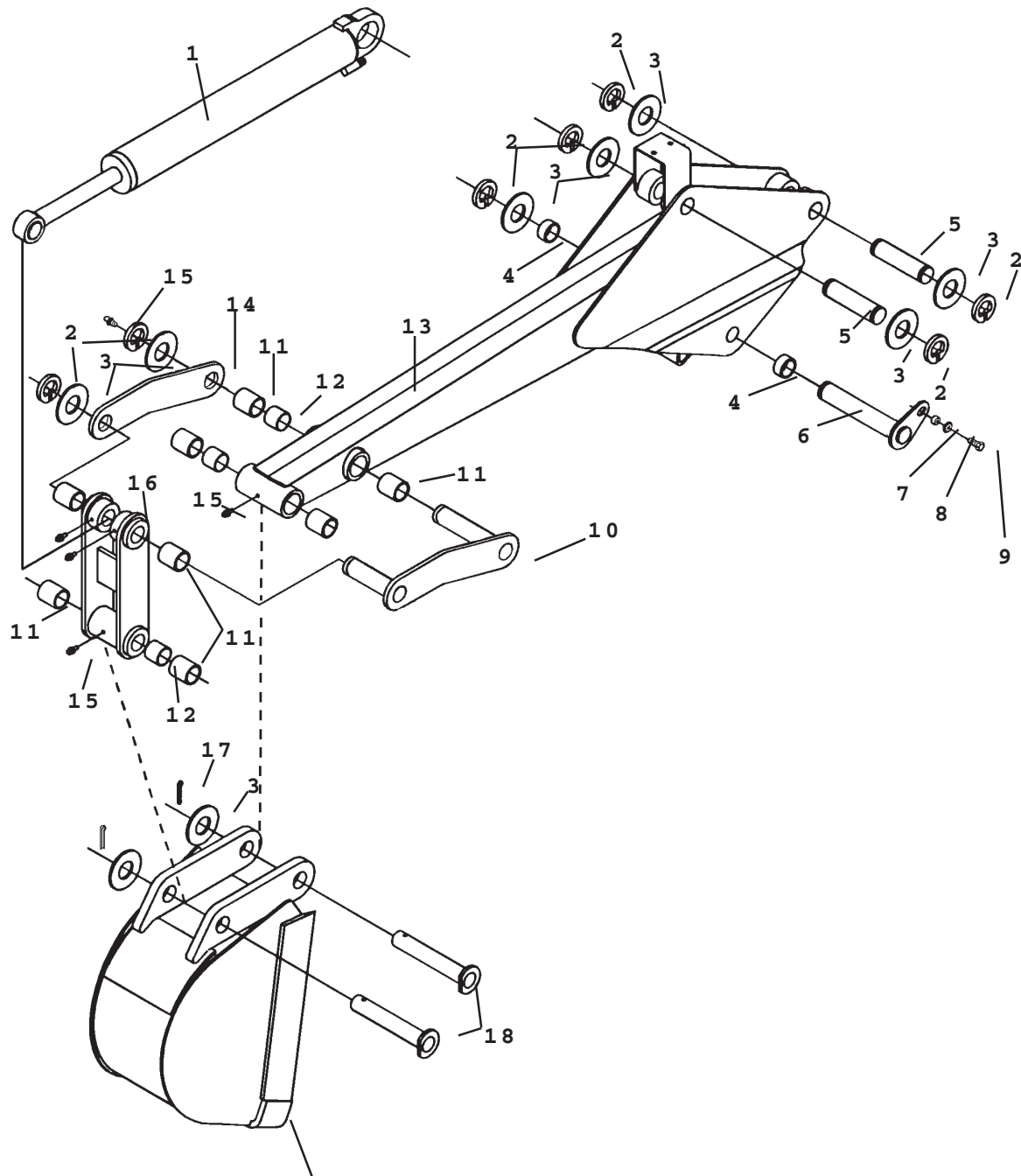
SERIAL #8408AX973 AND UP

NO	REQ'D	PART NO.	DESCRIPTION
1	1	922153	Boom Cylinder Assembly
	1	922281	90° Grease Zerk
2	As Req'd	922260	Thrust Washer 1.38" X .031"
	As Req'd	922193	Thrust Washer 1.38" X .090"
	As Req'd	922192	Thrust Washer 1.38" X .125"
3	1	922293	Dipper Cylinder Assembly
	2	922274	Grease Zerk
4	3	922272	.38" UNC X 1.00" Hex Capscrew
5	1	922274	.38" Lock Washer
6	1	922207	Clamp Plate
7	1	922208	Rubber Spacer
8	3	922274	Grease Zerk
9	-	922044	Bushing (Included in Boom) (Install with Locktite Grade 680)
10	1	922189 (1)	Pin
11	4	922110	Snap Ring
12	2	920957	Spring Washer
13	1	920961	.88" UNC Jam Lock Nut
14	1	922115	Boom (Includes (4) 81610 Bushings)
15	1	922113	Handle Grip
16	1	922210	Swing Lock Bracket
17	1	920954	.88" UNC Bolt
18	2	922294	.38" UNC X .50" Flange Head Hex Capscrew
19	1	920953	Boom Lock
20	1	922168 (3)	Pin 1.38" x 6.66" (Serial #---11168 and UP)
		922213 (2)	Pin 1.38" x 5.78" (UP to Serial #---11168)
21	2	922283	.38" UNC Lock Nut
22	2	922273	.38" Flat Washer
23	2	922231	Double Hose Clamp
24	1	922295	Rubber Edge - 12"
25	1	920955	Roll Pin
26	1	922296	Hose Sock
27	1	922297	Hose Clamp

BOOM & DIPPER ASSEMBLY

ASSEMBLY #922477

SERIAL #8408AX973 AND UP



BUCKET
(NOT INCLUDED IN BOOM & DIPPER ASSEMBLY)

BOOM & DIPPER ASSEMBLY

ASSEMBLY #922477

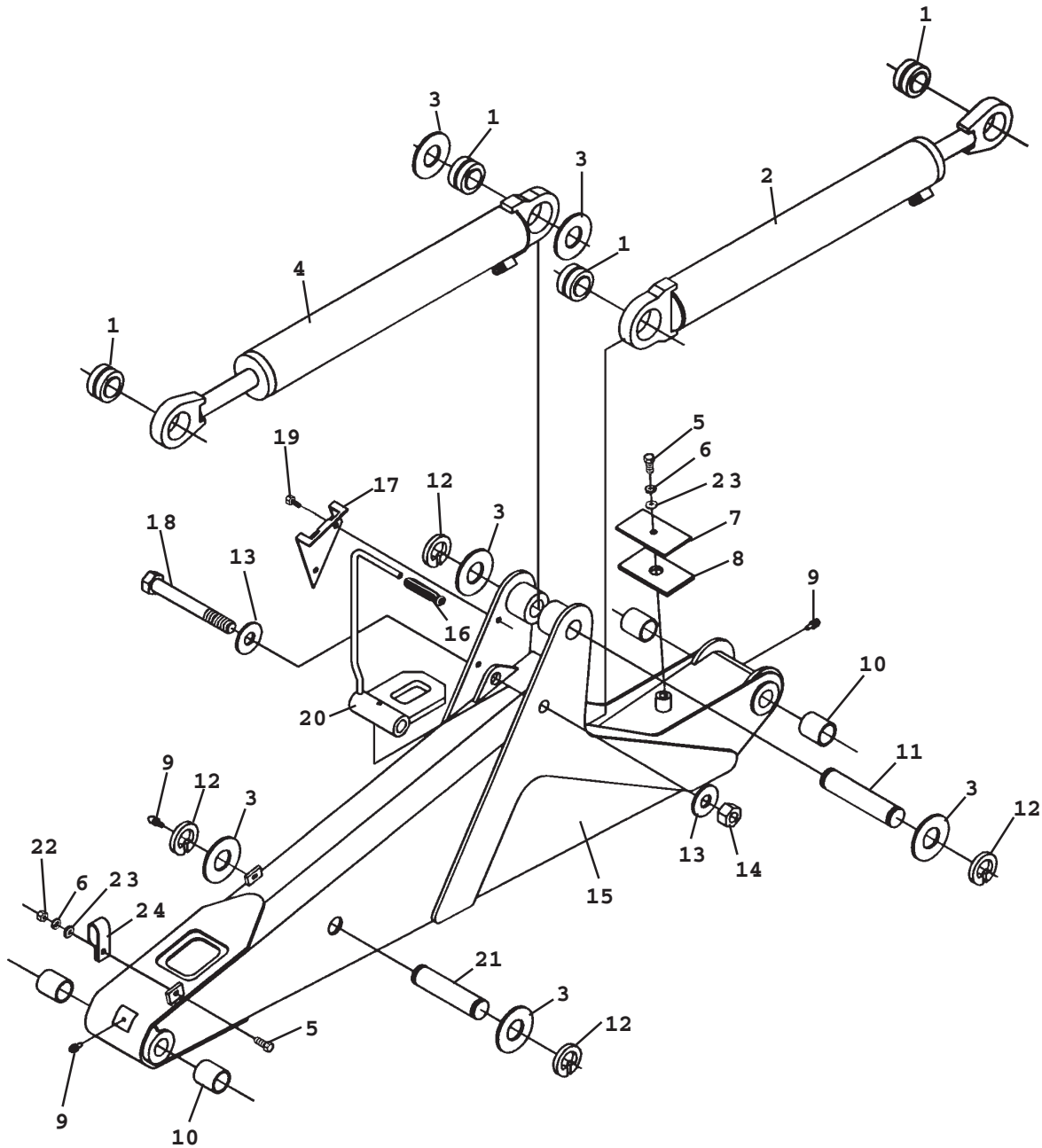
SERIAL #8408AX973 AND UP

NO	REQ'D	PART NO.	DESCRIPTION
1	1	922164	Bucket Cylinder Assembly
	1	922281	90° Grease Zerk
	1	922274	Grease Zerk
2	7	922110	Snap Ring
3	As Req'd	922260	Thrust Washer 1.38" X .031"
	As Req'd	922193	Thrust Washer 1.38" X .090"
	As Req'd	922192	Thrust Washer 1.38" X .125"
4	-	922119	Bushing (2) Included in Dipper (Installed with Locktite Grade 680)
5	2	922120	Pin
6	1	922121	Pin
	1	922274	Grease Zerk
7	1	922109	Spacer Tube
8	1	922273	.38" Flat Washer
9	1	922272	.38" UNC X 1.00" Hex Capscrew (Installed with Locktite Grade 242)
10	1	922122	Dipper Link
11	-	922044	Bushing (4) Included in Dipper (4) Included in Bucket Link (Installed with Locktite Grade 680)
12	-	922182	Spacer (2) Included in Dipper (1) Included in Bucket Link
13	1	922124	Dipper (Includes (4) 81610 Bushings, (2) 82443 Bushings and (2) 83368 Spacers (Bushings installed with Locktite Grade 680)
14	1	922125	Dipper Link
15	5	922274	Grease Zerk
16	1	922126	Bucket Link (Includes (4) 81610 Bushings and (1) 83368 Spacer) (Bushings installed with Locktite Grade 680)
17	2	922270	Cotter Pin
18	2	922127	Bucket Pin

BOOM & DIPPER ASSEMBLY

ASSEMBLY #922478

UP TO SERIAL #8408AX972



BOOM & DIPPER ASSEMBLY

ASSEMBLY #922478

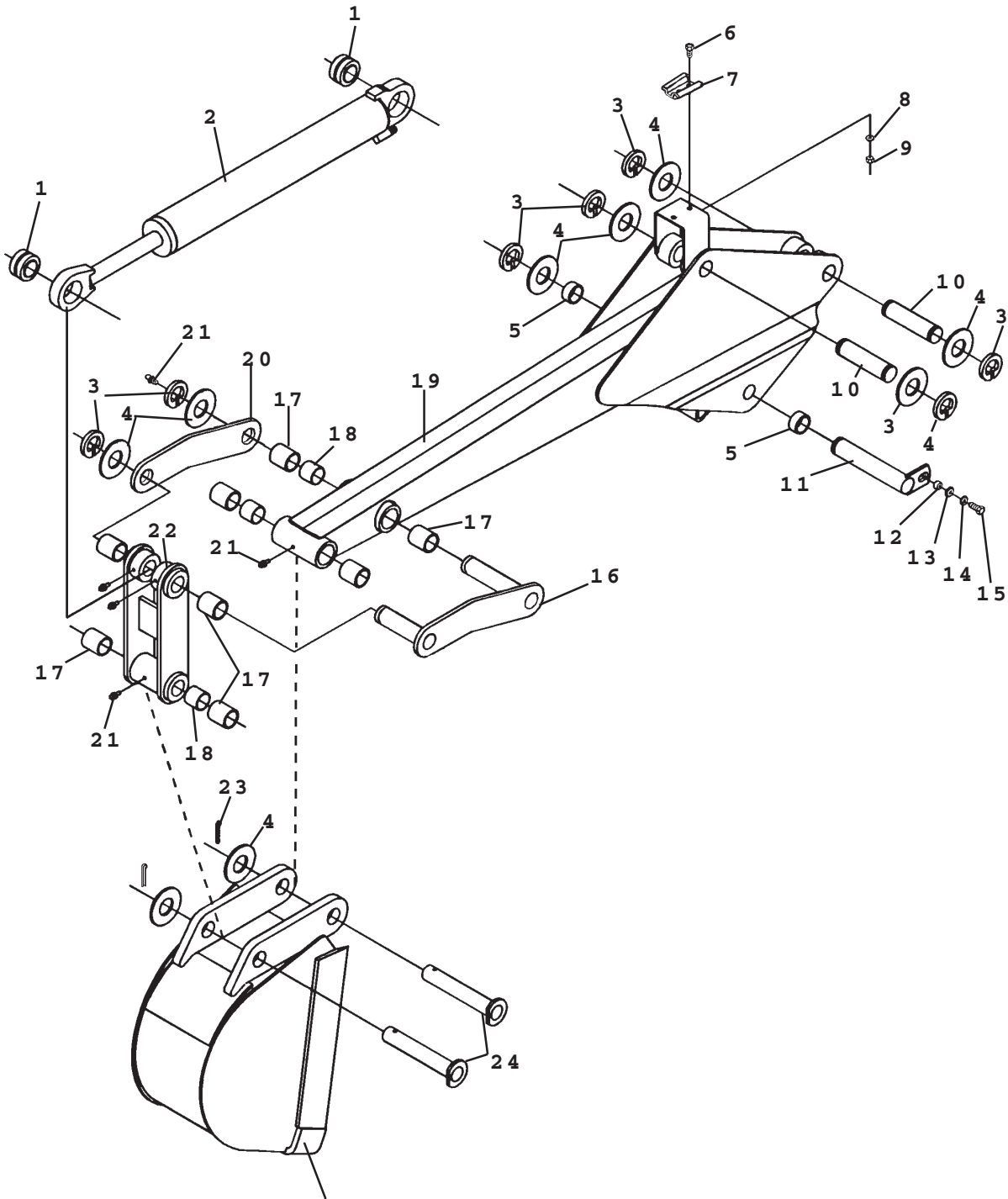
UP TO SERIAL #8408AX972

NO	REQ'D	PART NO.	DESCRIPTION
1	-	922114	Self Aligning Bushing (Included in Cylinder Assemblies)
2	1	922187	Boom Cylinder Assembly
	1	922287	90° Grease Zerk
3	As Req'd	922260	Thrust Washer 1.38" X .031"
	As Req'd	922193	Thrust Washer 1.38" X .090"
	As Req'd	922192	Thrust Washer 1.38" X .125"
4	1	922188	Dipper Cylinder Assembly
	2	922274	Grease Zerk
5	3	922272	.38" UNC X 1.00" Hex Capscrew
6	3	922277	.38" Lock Washer
7	1	922207	Clamp Plate
8	1	922208	Rubber Spacer
9	3	922274	Grease Zerk
10	-	922044	Bushing (Included in Boom) (Install with Loctite Grade 680)
11	1	922189	Pin
12	4	922110	Snap Ring
13	2	922257	Spring Washer
14	1	920956	.88" UNC Lock Nut
15	1	922115	Boom (Includes (4) 81610 Bushings)
16	1	922298	Handle Grip
17	1	922210	Swing Lock Bracket
18	1	922212	.88" UNC X 7.00" Hex Capscrew
19	2	922213	.38" UNC X .75" Flange Head Hex Capscrew
20	1	920953	Boom Lock
	1	922299	.38" X .50" Set Screw
21	1	922213	Pin 1.38 x 5.78 (up to S/N ---11168)
		922168	Pin 1.38 x 6.65 (S/N ---11168 and up)
22	2	922300	.38" UNC Hex Nut
23	3	922273	.38" Flat Washer
24	2	922231	Double Hose Clamp

BOOM & DIPPER ASSEMBLY

ASSEMBLY #922478

UP TO SERIAL #8408AX972



BUCKET
(NOT INCLUDED IN BOOM & DIPPER ASSEMBLY)

BOOM & DIPPER ASSEMBLY

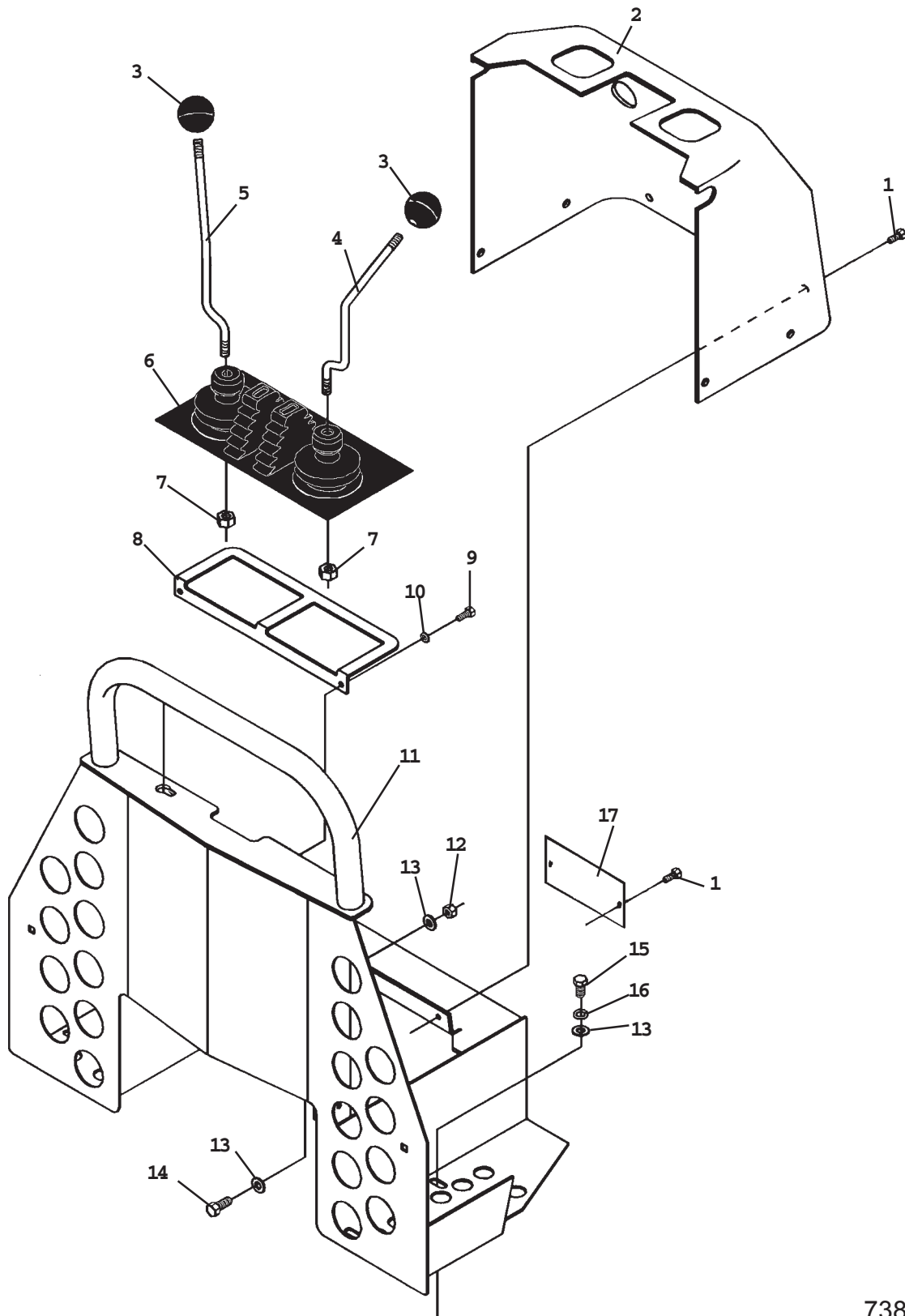
ASSEMBLY #922478

UP TO SERIAL #8408AX972

NO	REQ'D	PART NO.	DESCRIPTION
1	-	920114	Self Aligning Bushing (Included in Cylinder Assembly)
2	1	922190	Bucket Cylinder Assembly
	1	922281	90° Grease Zerk
	1	922274	Grease Zerk
3	7	922110	Snap Ring
4	As Req'd	922260	Thrust Washer 1.38" X .031"
	As Req'd	922193	Thrust Washer 1.38" X .090"
	As Req'd	922192	Thrust Washer 1.38" X .125"
5	-	922119	Bushing (2) Included in Dipper (Installed with Locktite Grade 680)
6	2	922301	.31" UNC X .75" Hex Capscrew
7	1	922302	SMV Clip
8	2	922303	.31" Lock Washer
9	2	922304	.31" UNC Hex Nut
10	2	922120	Pin
11	1	922197	Pin
12	1	922109	Spacer Tube
13	1	922273	.38" Flat Washer
14	1	922277	.38" Lock Washer
15	1	922272	.38" UNC X 1.00" Hex Capscrew (Installed with Locktite Grade 242)
16	1	922122	Dipper Link
17	-	922044	Bushing (4) Included in Dipper (4) Included in Bucket Link (Installed with Locktite Grade 680)
18	-	922182	Spacer (2) Included in Dipper (1) Included in Bucket Link
19	1	922123	Dipper (Includes (4) 81610 Bushings, (2) 82443 Bushings and (2) 83368 Spacers (Bushings installed with Locktite Grade 680)
20	1	922305	Dipper Link
21	5	922274	Grease Zerk
22	1	922195	Bucket Link (Includes (4) 81610 Bushings and (1) 83368 Spacer) (Bushings installed with Locktite Grade 680)
23	2	922270	Cotter Pin
24	2	922127	Bucket Pin

CONSOLE ASSEMBLY

ASSEMBLY #922479



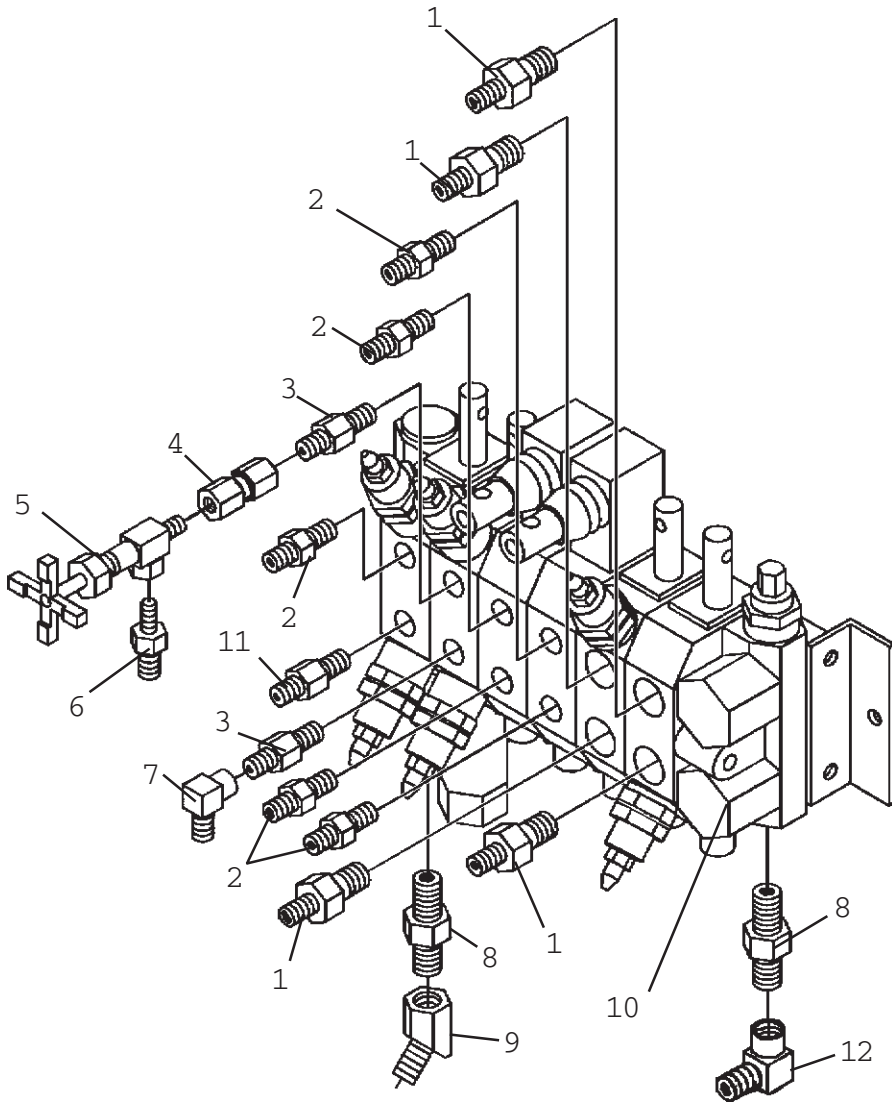
CONSOLE ASSEMBLY

ASSEMBLY #922479

NO	REQ'D	PART NO.	DESCRIPTION
1	8	922306	.25" UNC X .75" Hex Head Body Bolt
2	1	922234	Console Cover with Decals
3	2	922050	Ball Handle
4	1	922048	Control Handle - Left
5	1	922049	Control Handle - Right
6	1	922051	Control Lever Boot
7	2	922307	M10 Hex Nut
8	1	922308	Boot Support Plate
9	2	922309	.25" UNC X .50" Hex Capscrew
10	2	922310	.25" Lock Washer
11	1	922223	Console
12	2	922283	.38" UNC Deformed Lock Nut
13	8	922273	.38" Flat Washer
14	2	922272	.38" UNC X 1.00" Hex Capscrew
15	4	922311	.38" UNC X .75" Hex Capscrew
16	4	922277	.38" Lock Washer
17	1	922312	Cover Plate

VALVE ASSEMBLY

ASSEMBLY #922267



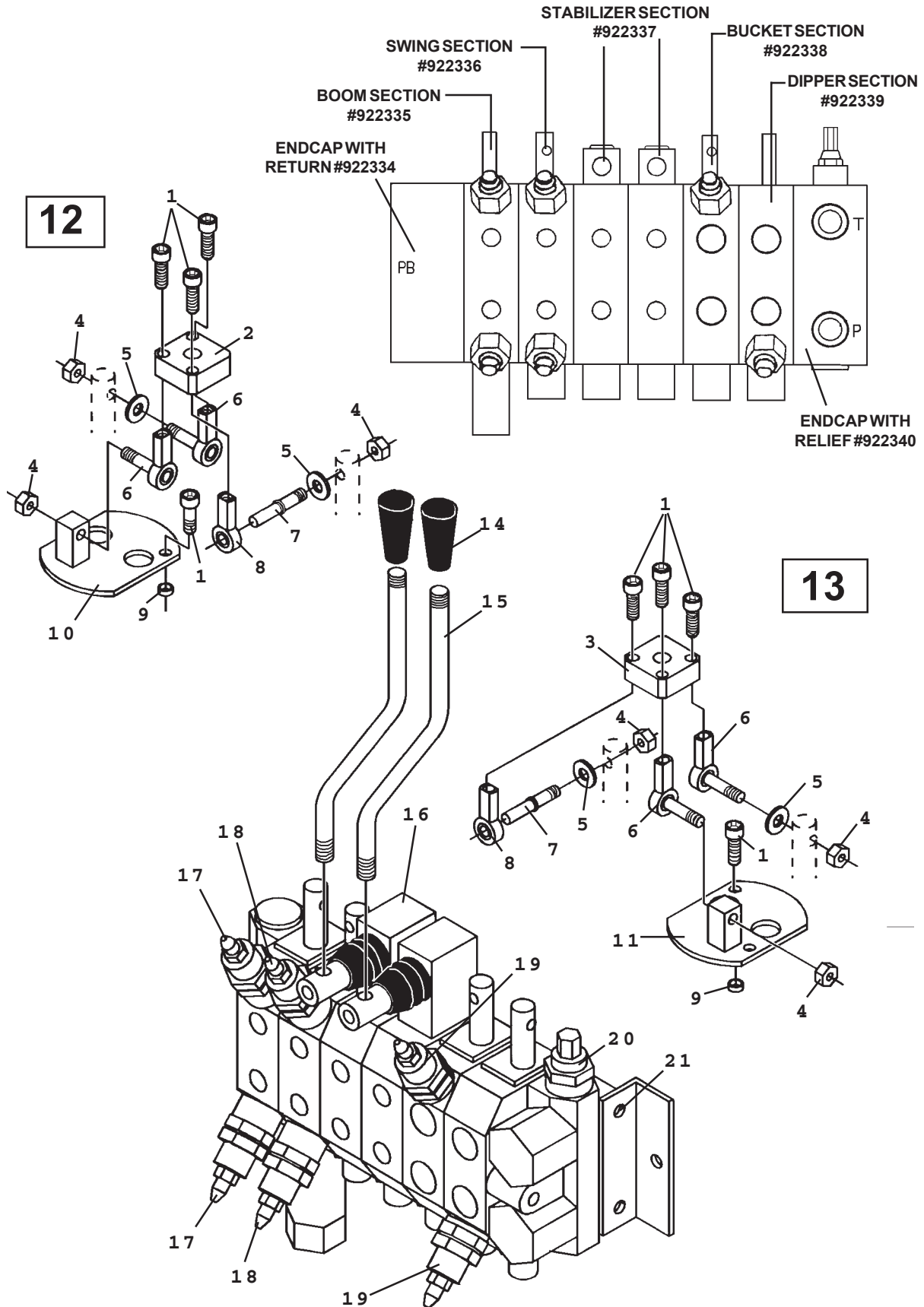
VALVE ASSEMBLY

ASSEMBLY #922267

NO	REQ'D	PART NO.	DESCRIPTION
1	4	922052	Straight Adapter 8MBo - 6MJ
2	5	922053	Straight Adapter 6MBo - 6MJ
3	2	922313	Adapter 6MBo - 6MJ (.076 Restrictor)
4	1	922314	Swivel Adapter 4FP - 6FJX
5	1	922056	Needle Valve (Speed Control)
		921144	Handle Only
6	1	922057	Straight Adapter 4MP - 6MJ
7	1	922058	90° Street Adapter 6FJX - 6MJ
8	2	922059	Straight Adapter 8MBo - 8MJ
9	1	922060	45° Street Adapter 8FJX - 8FJ
10	1	922061	6-Spool Hidroirma Valve
11	1	922180	Adapter 6MBo - 6MJ (.109 Restrictor)
12	1	922315	90° Street Elbow 8FJX 0 8MJ

VALVE ASSEMBLY

HIDROIRMA VALVE #922061



VALVE ASSEMBLY

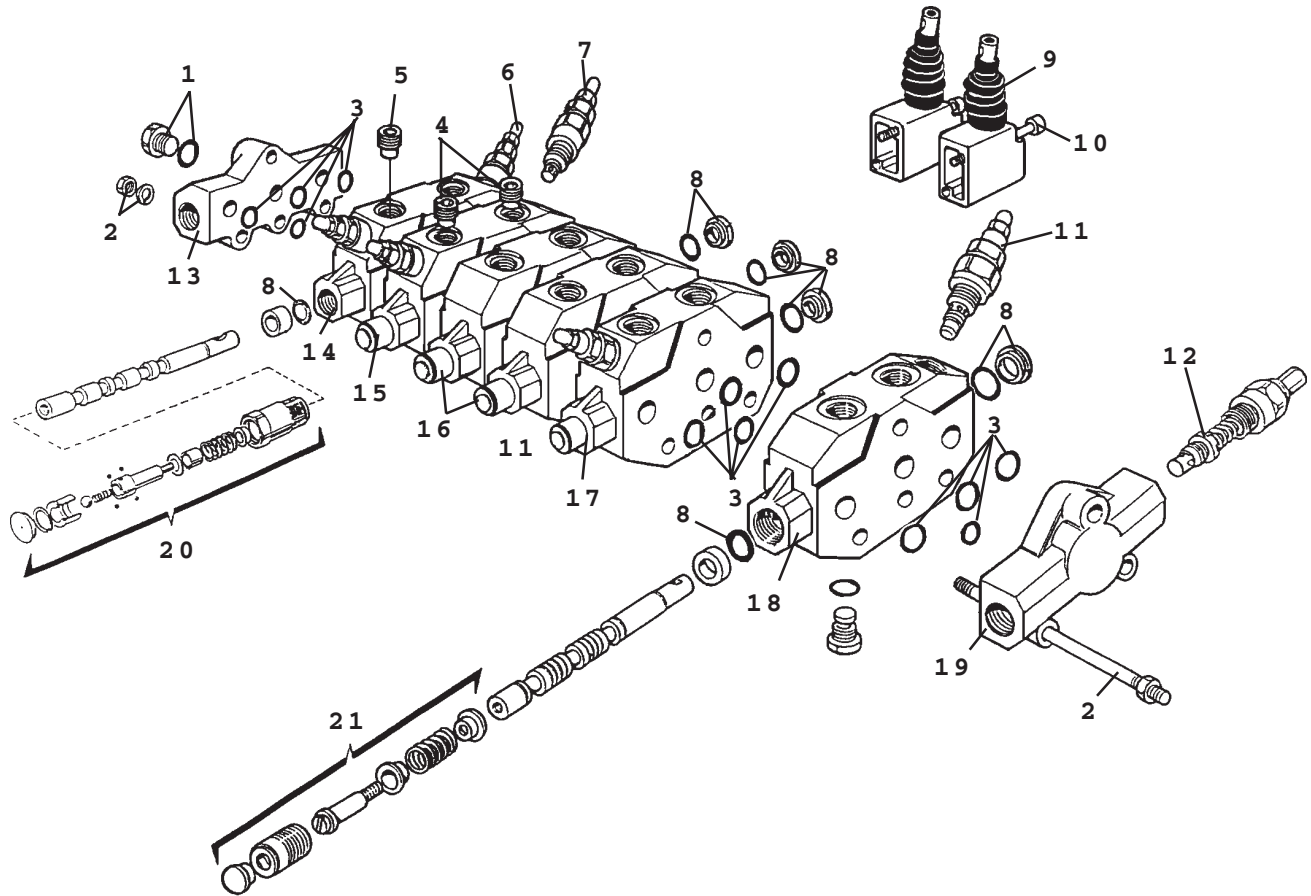
HIDROIRMA VALVE #922061

SERVICE PARTS

NO	REQ'D	PART NO.	DESCRIPTION
1	10	922066	Screw
2	1	922064	Joystick Plate - Left
3	1	922065	Joystick Plate - Right
4	6	040013	Nut
5	4	922316	Washer
6	4	922062	Terminal With Stud
7	2	922169	Joystick Spool Pin
8	2	922063	Terminal
9	4	922317	Bushing
10	1	922318	Left Joystick Support
11	1	922319	Right Joystick Support
12	-	922320	Left Joystick Assembly (Includes Items 1, 2, 4, 5, 6, 7, 8, 9, 10)
13	-	922321	Right Joystick Assembly (Includes Items 1, 3, 4, 5, 6, 7, 8, 9, 11)
14	2	922322	Knob
15	2	922323	Stabilizer Control Lever
16	-	922061	Complete Valve Assembly (Includes all Items on this Page)
17	2	922324	Circuit Relief With Anti-Cav. @ 2500 PSI
18	2	922325	Circuit Relief With Anti-Cav. @ 2250 PSI
19	2	922067	Circuit Relief @ 2500 PSI
20	1	922356	Main Relief @ 2250 PSI
21	3	922327	Tie Bolt Assembly (Includes Tie Bolt, Washer & Nut)

VALVE ASSEMBLY

REPLACEMENT PARTS - HYDROIRMA VALVE



VALVE ASSEMBLY

REPLACEMENT PARTS - HIDROIRMA VALVE

NO	REQ'D	PART NO.	DESCRIPTION
1	-	922328	Plug 8MBo
	-	922329	Replacement O'Ring
2	-	922327	Tie Rod Assembly (Includes Nuts & Washers)
3	-	922069	Section Seal Kit
4	-	922330	Restrictor .076
5	-	922331	Restrictor .109
6	-	922324	Circuit Relief With Anti-Cav. @ 2500 PSI
7	-	922325	Circuit Relief With Anti-Cav. @ 2250 PSI
8	-	922068	Spool Seal Kit
9	-	922332	Stabilizer Lever Assembly
10	-	922333	Single Slot Screw
11	-	922067	Circuit Relief @ 2500 PSI
12	-	922326	Main Relief @ 2250 PSI
13	-	922334	Endcap With Return
14	-	922335	Valve Section - Boom
15	-	922336	Valve Section - Swing
16	-	922337	Valve Section - Stabilizers
17	-	922338	Valve Section - Bucket
18	-	922339	Valve Section - Dipper
19	-	922340	Endcap With Relief
20	-	922341	Float Assembly (Spool NOT Included) (If Float Spool is damaged, it is recommended to purchase a complete Valve Section.)
21	-	922342	Positioner Assembly (Spool NOT Included) (If Positioner Spool is damaged, it is recommended to purchase a complete Valve Section.)

NOTES:

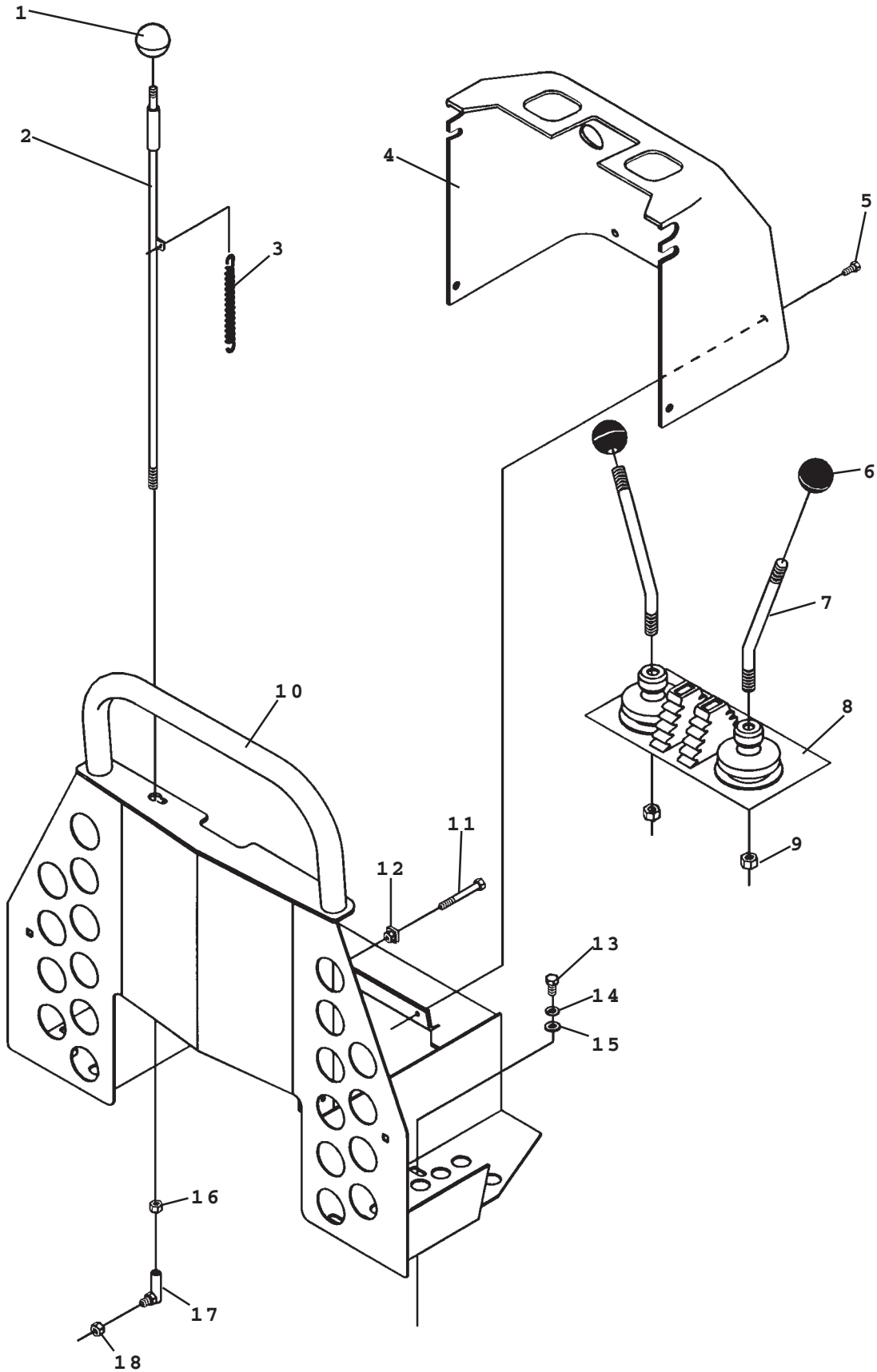
Items without part numbers are not sold separately.

Spool Seal Kit #922068 contains (2) O-Ring Seals and (1) Flanged Washer.

Section Seal Kit #922069 includes (4) O'Rings O'Ring Seals.

CONSOLE ASSEMBLY

ASSEMBLY #922480



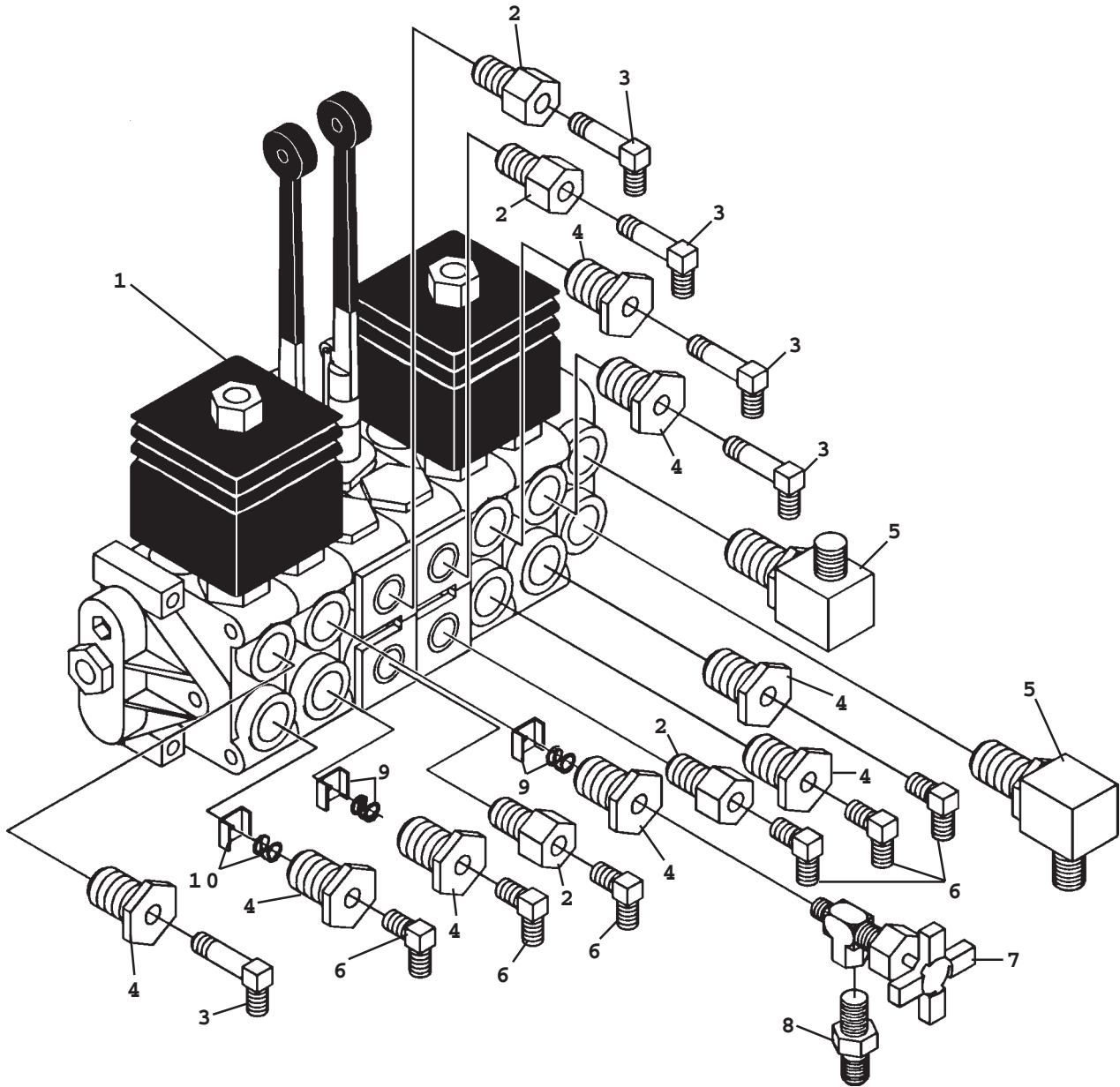
CONSOLE ASSEMBLY

ASSEMBLY #922480

NO	REQ'D	PART NO.	DESCRIPTION
1	1	922343	Ball Handle - RED
2	1	922344	Rod
3	1	922345	Spring
4	1	922234	Console Cover with Decals
5	6	922346	.25" UNC X .75" Flange Head Hex Capscrew
6	2	922131	Ball Handle
7	2	922130	Control Handle
8	1	922051	Control Lever Boot
9	2	922347	.50" UNC Jam Nut
10	1	922223	Console
11	3	922348	.31" UNC X 2.75" Hex Capscrew
12	3	922349	.31" UNC U-Nut
13	4	922311	.38" UNC X .75" Hex Capscrew
14	4	922277	.38" Lock Washer
15	4	922273	.38" Flat Washer
16	1	922350	.38-24" UNF Jam Nut
17	1	922351	Balljoint
18	1	922352	.38" UNF Lock Nut

VALVE ASSEMBLY

ASSEMBLY #922481



VALVE ASSEMBLY

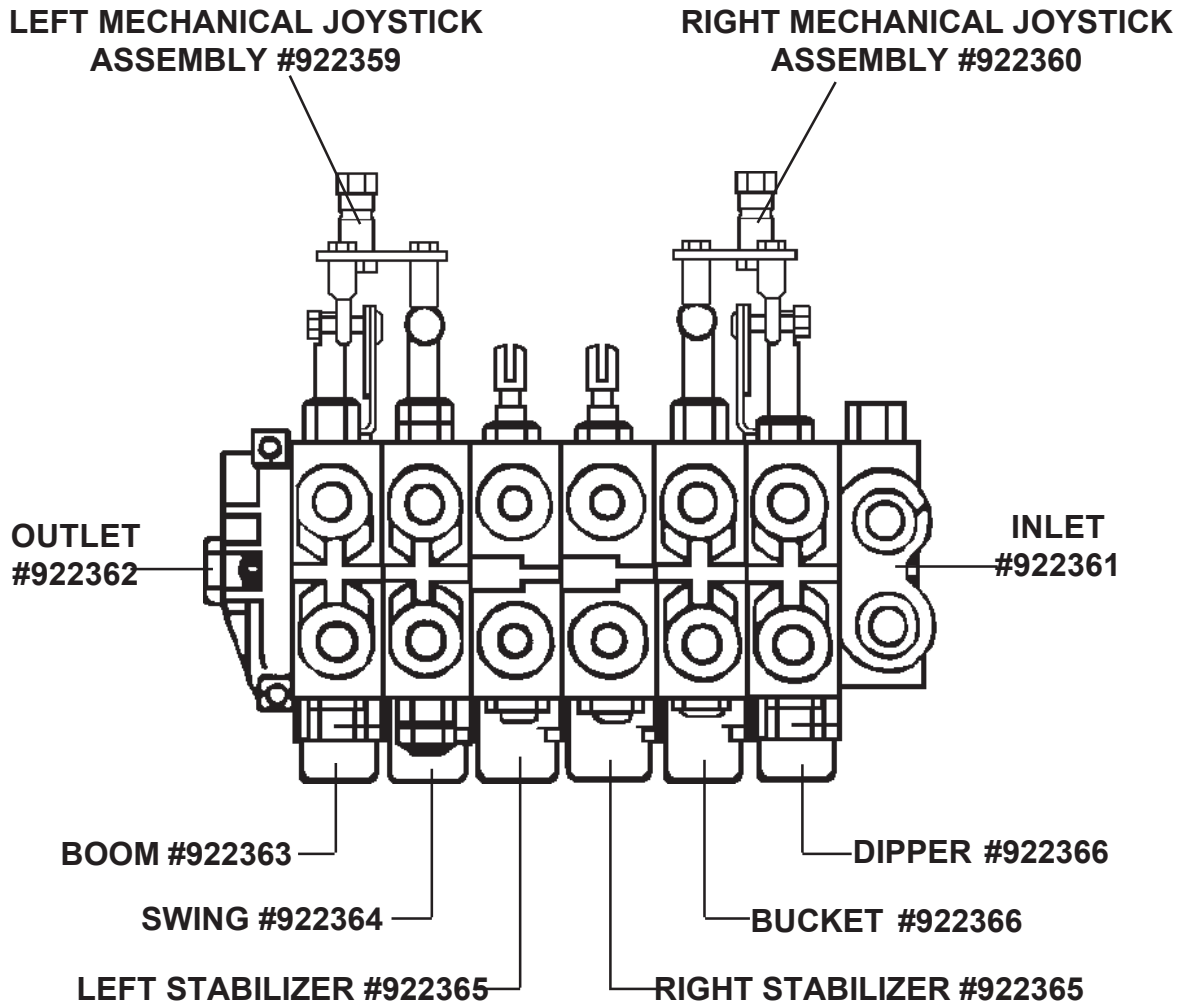
ASSEMBLY #922481

NO	REQ'D	PART NO.	DESCRIPTION
1	1	922132	Valve - 6 Spool - Gresen
2	4	922353	O'Ring Adapter 8MBo-4FP
3	5	922354	90° Adapter 4MP-6MJ
4	8	922355	O'Ring Adapter 10MBo-4FP
5	2	922356	90° Adapter 10MBo-8MJ
6	6	922557	90° Adapter 4MP-6MJ
7	1	922056	Needle Valve
8	1	922057	Male Connector 4MP-6MJ
9	-	922357	Restrictor with Spring - .076 Dia. Orifice (Included in Valve)
10	-	922358	Restrictor with Spring - .109 Dia. Orifice (Included in Valve)

Leave Blank

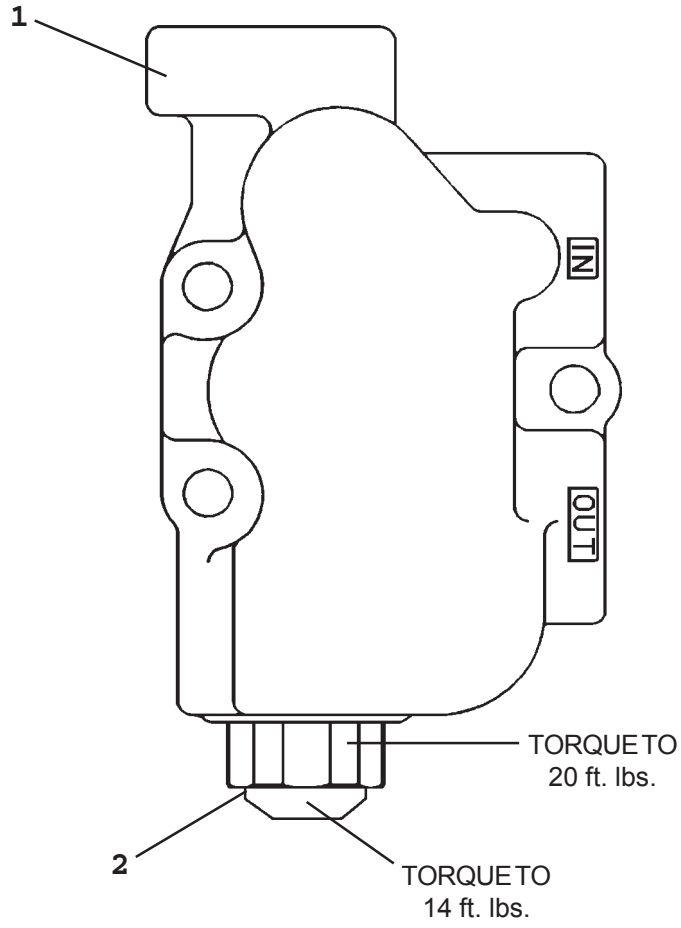
VALVE ASSEMBLY

408 BACKHOE VALVE ASSEMBLY



VALVE ASSEMBLY

GRESEN INLET COVER



VALVE ASSEMBLY

GRESEN INLET COVER

NO	REQ'D	PART NO.	DESCRIPTION
1	1	922361	Inlet Cover #10 Ports
2	1	922367	WH Main Relief Valve Assembly @ 2250 PSI

NOTES:

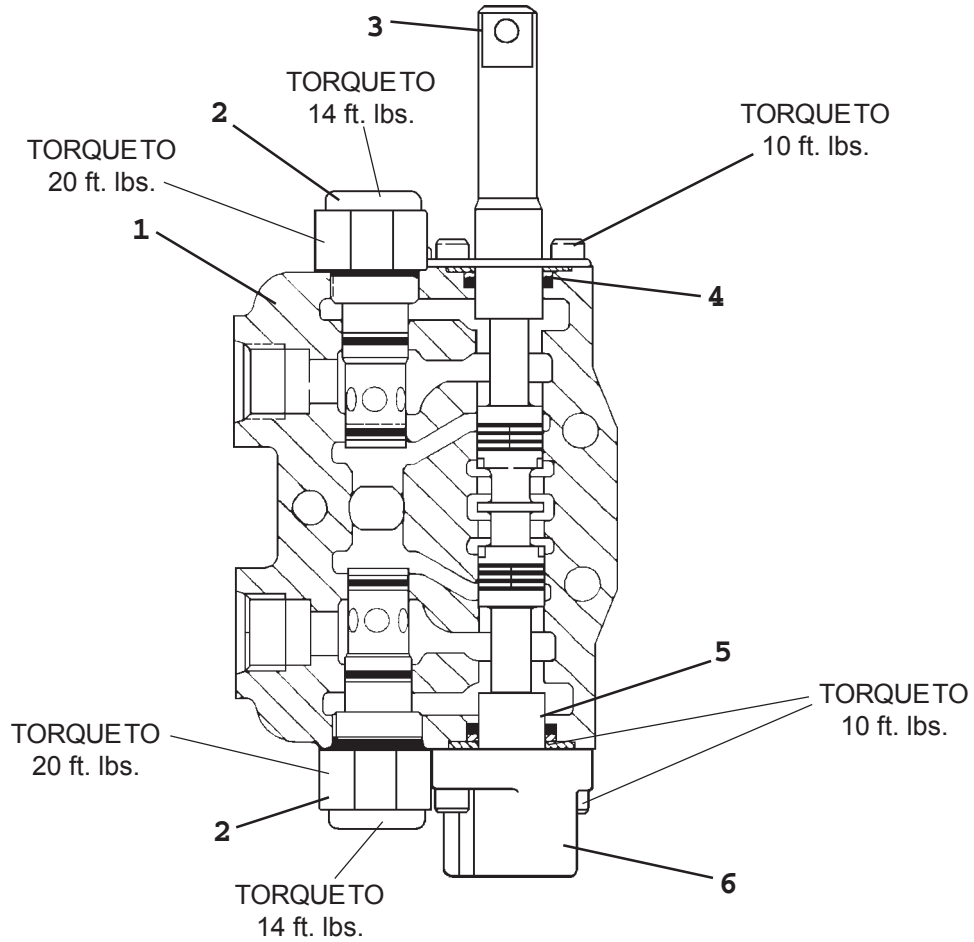
Valve Section Seal Kit #922373 contains (3) Exhaust Passage O-Ring
Seals and (2) Pressure Passage O-Ring Seals

VALVE ASSEMBLY

GRESEN VALVE SECTION ASSEMBLY #922366

408 Dipper & Bucket Section

509, 511, 609 & 611 Dipper Section



VALVE ASSEMBLY

GRESEN VALVE SECTION ASSEMBLY #922366

408 Dipper & Bucket Section

509, 511, 609 & 611 Dipper Section

NO	REQ'D	PART NO.	DESCRIPTION
1	1		Valve Section Housing
2	2	922368	Cylinder Port Relief Assembly @ 2500 PSI
3	1	922369	Spool Clevis Adapter
4	2	922370	Spool Seal Kit
5	1		Spool
6	1	922371	Spool Positioner Assembly

INCLUDED IN VALVE ASSEMBLY BUT NOT IN VALVE SECTION

1		922372	Restrictor with Spring - .095 Dia. Orifice (Used in 408 Dipper Section - Top Port)
1		922373	Restrictor with Spring - .076 Dia. Orifice (Used in 408 Bucket Section - Bottom Port)

NOTES:

Items without part numbers are not sold separately.

Valve Section Seal Kit #922373 contains (3) Exhaust Passage O-Ring Seals and (2) Pressure Passage O-Ring Seals.

Complete Section Service Seal Kit #922374 includes ALL seals needed to service one complete valve section.

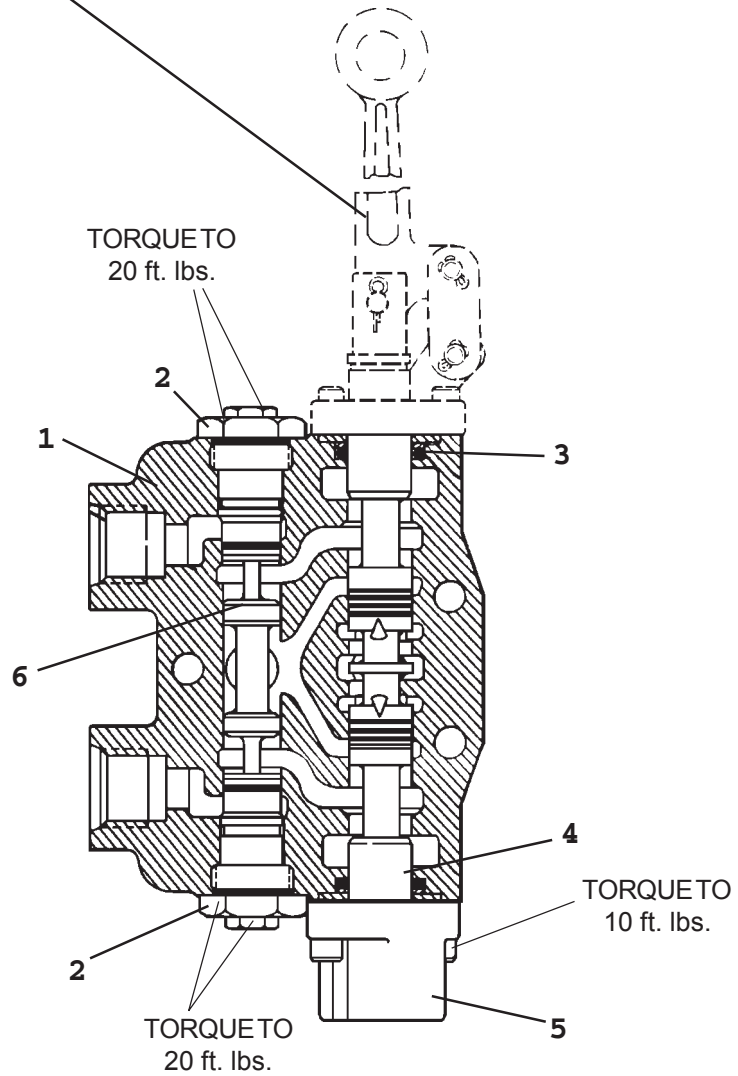
6944

5-25-99-3

VALVE ASSEMBLY

GRESEN VALVE STABILIZER SECTION
ASSEMBLY #922365

Horizontal Handle Assembly #922393
(Not included in Valve Section Assembly #922365)



VALVE ASSEMBLY

GRESEN VALVE STABILIZER SECTION ASSEMBLY #922365

NO	REQ'D	PART NO.	DESCRIPTION
1	1		Valve Section Housing
2	2	922375	Lockout Check Assembly
3	2	922370	Spool Seal Kit
4	1		Spool
5	1	922371	Spool Positioner Assembly
6	1	922376	Unlocking Piston

NOTES:

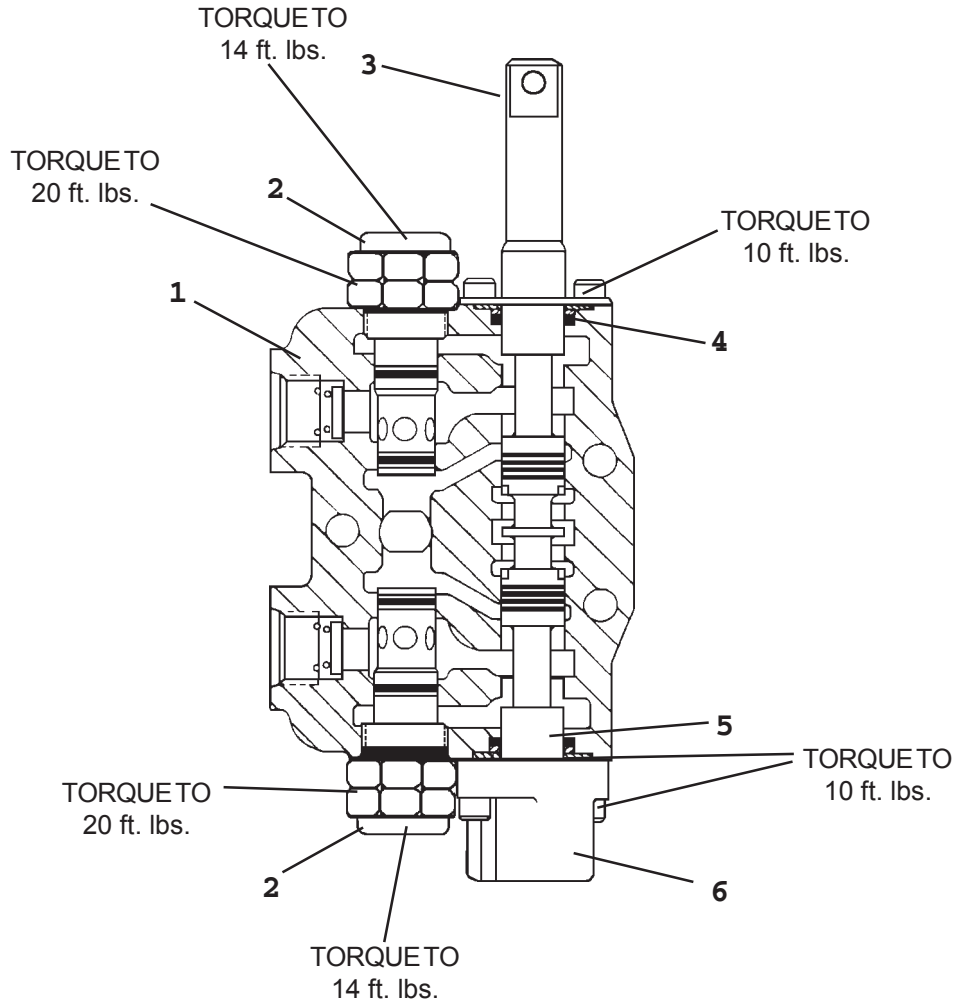
Items without part numbers are not sold separately.

Valve Section Seal Kit #922373 contains (3) Exhaust Passage O-Ring Seals and (2) Pressure Passage O-Ring Seals.

Complete Section Service Seal Kit #922374 includes ALL seals needed to service one complete valve section.

VALVE ASSEMBLY

GRESEN VALVE SECTION ASSEMBLY #922364
408 Swing Section



VALVE ASSEMBLY

GRESEN VALVE SECTION ASSEMBLY #922364
408 Swing Section

NO	REQ'D	PART NO.	DESCRIPTION
1	1		Valve Section Housing
2	2	922377	Cylinder Port Relief / Anti-Cav. Check Assembly @ 2250 PSI
3	1	922369	Spool Clevis Adapter
4	2	922370	Spool Seal Kit
5	1		Spool
6	1	922371	Spool Positioner Assembly

INCLUDED IN VALVE ASSEMBLY BUT NOT IN VALVE SECTION

2	922357	Restrictor with Spring - .076 Dia. Orifice
---	--------	--

NOTES:

Items without part numbers are not sold separately.

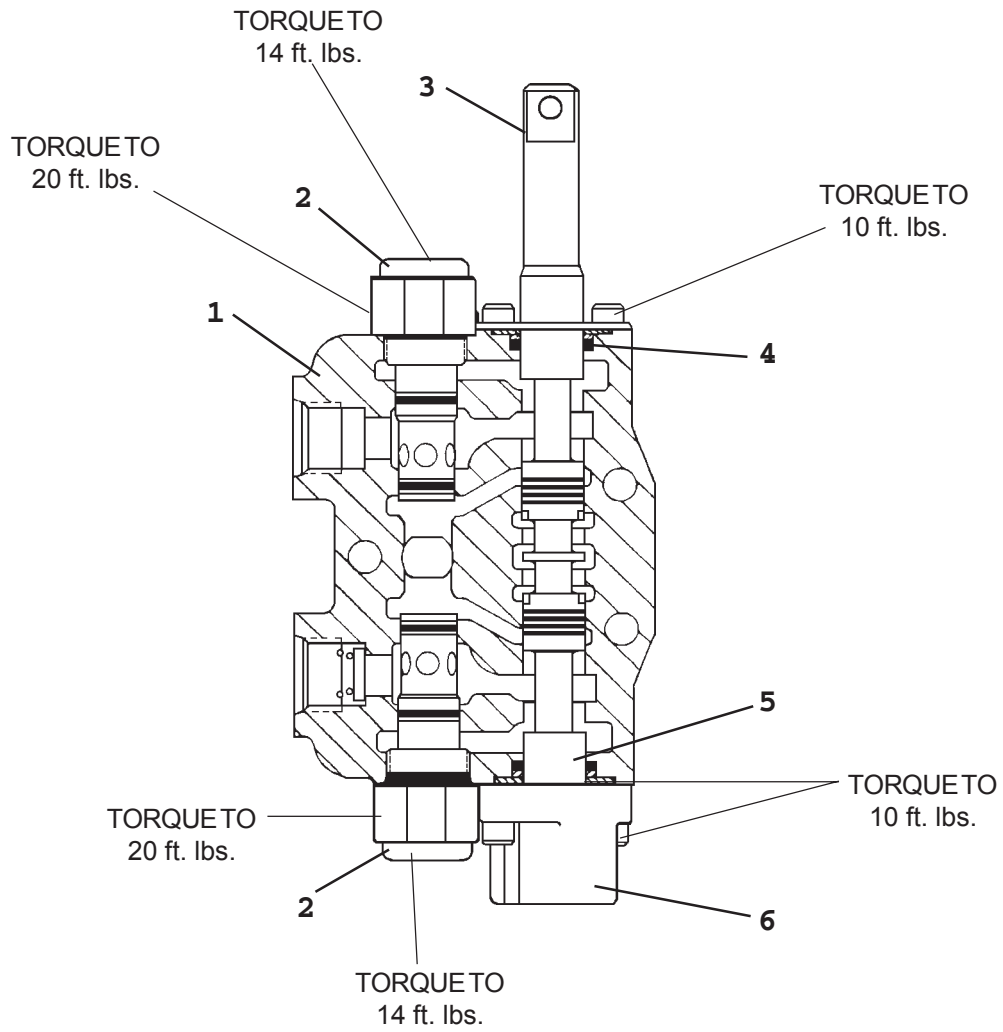
Valve Section Seal Kit #922373 contains (3) Exhaust Passage O-Ring
Seals and (2) Pressure Passage O-Ring Seals.

Complete Section Service Seal Kit #922374 includes ALL seals needed
to service one complete valve section.

6970
9-21-98-2

VALVE ASSEMBLY

GRESEN VALVE SECTION ASSEMBLY #922363
408 Boom Section



VALVE ASSEMBLY

GRESEN VALVE SECTION ASSEMBLY #922363
408 Boom Section

NO	REQ'D	PART NO.	DESCRIPTION
1	1		Valve Section Housing
2	2	922368	Cylinder Port Relief Assembly @ 2500 PSI
3	1	922369	Spool Clevis Adapter
4	2	922370	Spool Seal Kit
5	1		Spool
6	1	922371	Spool Positioner Assembly

INCLUDED IN VALVE ASSEMBLY BUT NOT IN VALVE SECTION

1		922372	Restrictor with Spring - .095 Dia. Orifice (Used in 408 Boom Section - Top Port)
1		922358	Restrictor with Spring - .109 Dia. Orifice (Used in 408 Boom Section - Bottom Port)

NOTES:

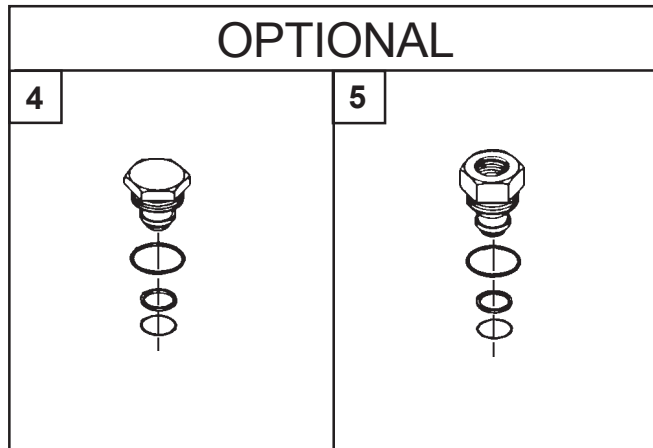
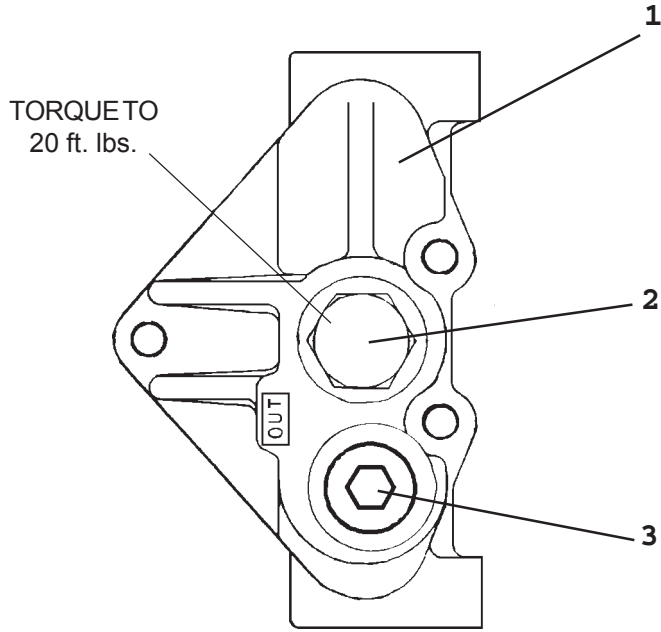
Items without part numbers are not sold separately.

Valve Section Seal Kit #922373 contains (3) Exhaust Passage O-Ring Seals and (2) Pressure Passage O-Ring Seals.

Complete Section Service Seal Kit #922374 includes ALL seals needed to service one complete valve section

VALVE ASSEMBLY

GRESEN OUTLET COVER



VALVE ASSEMBLY

GRESEN OUTLET COVER

NO	REQ'D	PART NO.	DESCRIPTION
1	1	922362	Outlet Cover
2	1	922378	Open Center Plug Assembly (Includes Open Center Plug & Main O-Ring Seal #4693)
3	1	922379	Plug

OPTIONAL

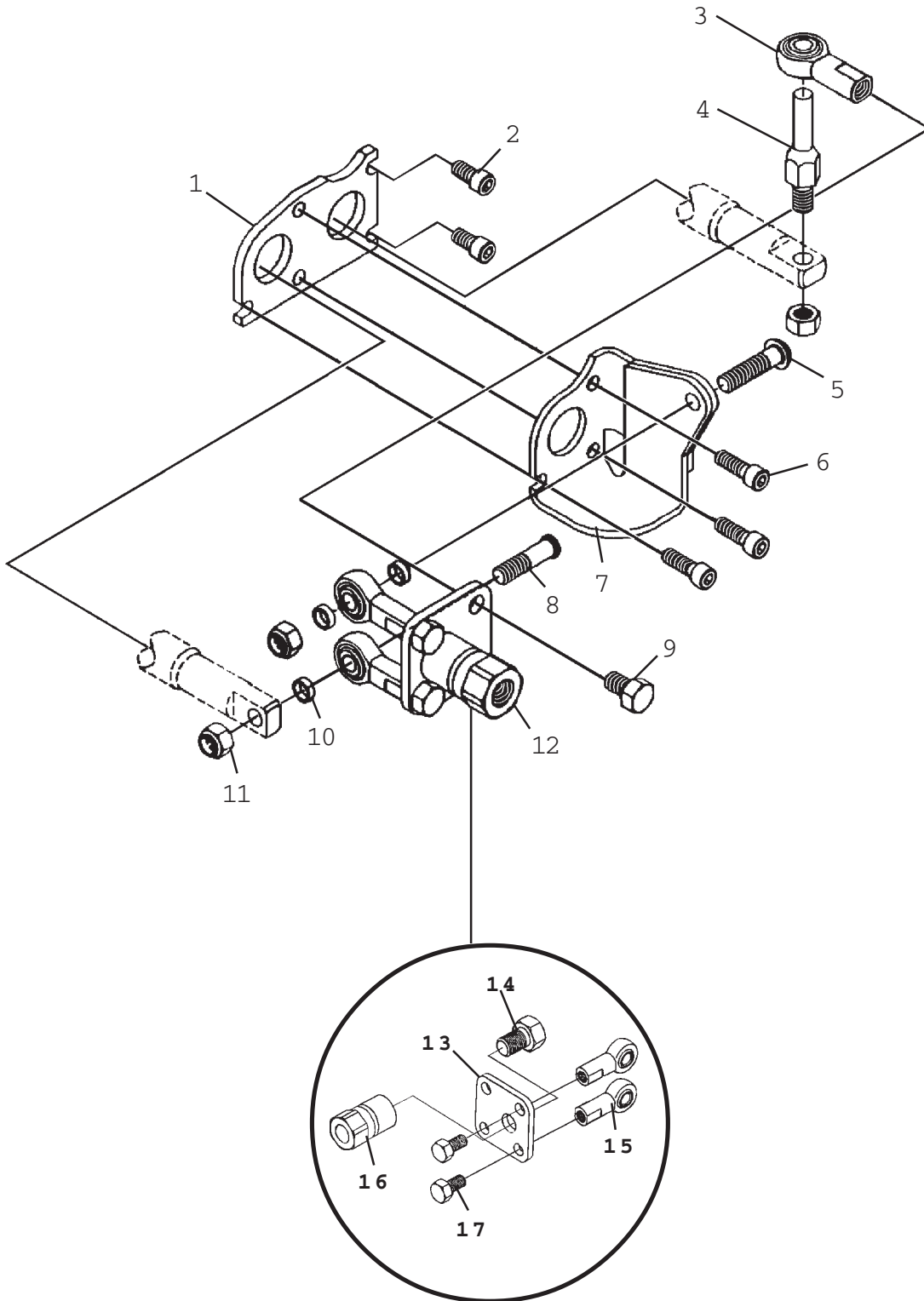
4	-	922380	Closed Center Plug Assembly (Includes Main O-Ring Seal #4693)
5	-	922133	Power Beyond Sleeve Assembly (Includes Main O-Ring Seal #4693)

NOTES:

Valve Section Seal Kit #922373 contains (3) Exhaust Passage O-Ring Seals and (2) Pressure Passage O-Ring Seals.

VALVE ASSEMBLY

LEFT MECHANICAL JOYSTICK ASSEMBLY #922359
RIGHT MECHANICAL JOYSTICK ASSEMBLY #922360



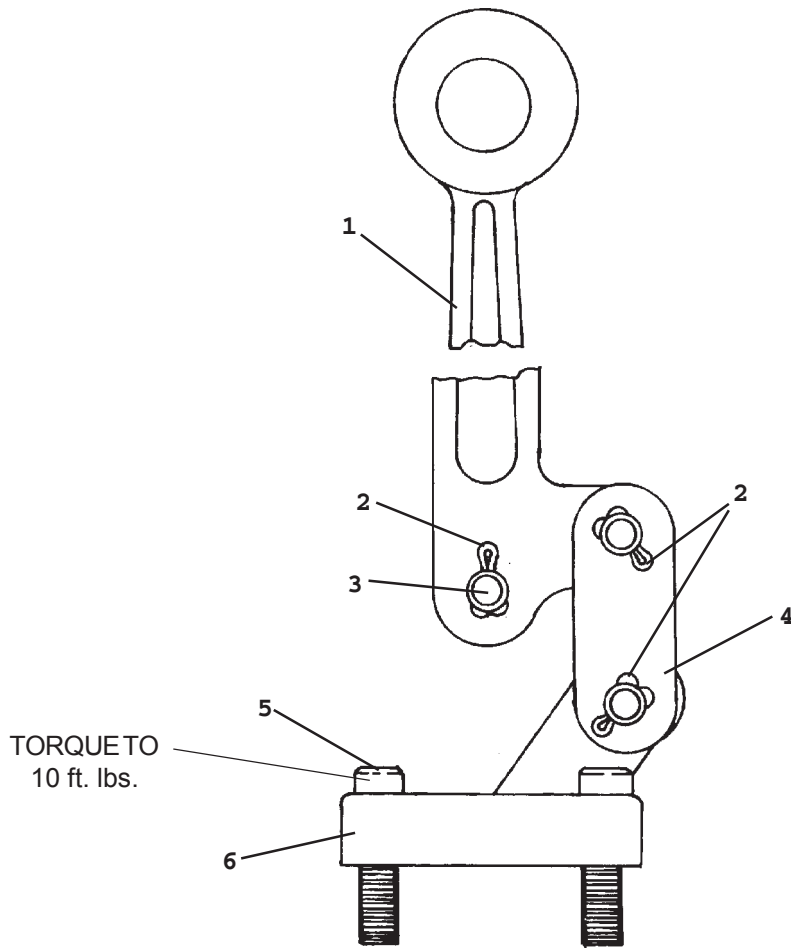
VALVE ASSEMBLY

LEFT MECHANICAL JOYSTICK ASSEMBLY #922359
RIGHT MECHANICAL JOYSTICK ASSEMBLY #922360

NO	REQ'D	PART NO.	DESCRIPTION
1	1	922381	Mounting Plate
2	2	922382	Screw
3	1	922134	Rod End
4	1	922135	Mechanical Slide
5	1	922383	Screw
6	3	922384	Screw
7	1	922385	Bracket - Left
	1	922386	Bracket - Right
8	1	922165	Rod End Stud
9	1	922387	Screw
10	3	922166	Spacer
11	3	922167	Lock Nut
12	1	922388	Handle Plate Assembly (Includes Items #13 through #17)
13	1	922389	Mechanical Joystick Plate
14	1	922390	Screw
15	2	922134	Female Rod End
16	1	922391	Handle Adapter
17	2	922392	Screw

VALVE ASSEMBLY

Horizontal Handle and Bracket
Assembly #922393



VALVE ASSEMBLY

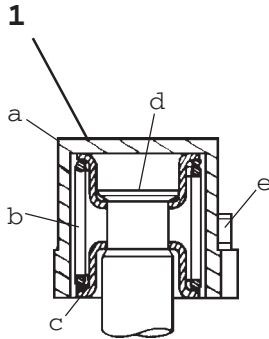
Horizontal Handle and Bracket
Assembly #922393

NO	REQ'D	PART NO.	DESCRIPTION
1	1	*	Handle
2	3	*	Cotter Pin
3	1	*	Pin
4	1	*	Link
	1	*	Link Plate
5	2	*	Screw
6	1	*	Bracket

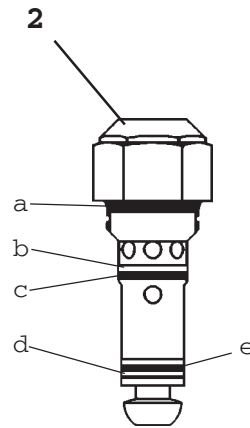
* **NOTE: All parts marked with an asterisk (*) are included in Horizontal Handle and Bracket Assembly #922393. Parts are not sold separately.**

VALVE ASSEMBLY

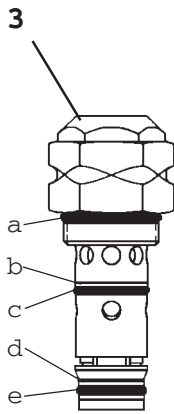
GRESEN VALVE SERVICE PARTS



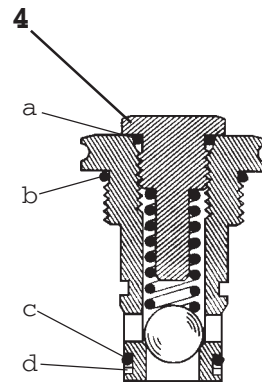
Spool Positioner Assembly



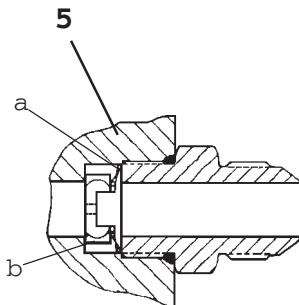
Cylinder Port Relief Assembly



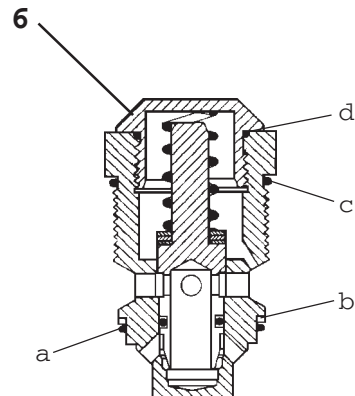
Cylinder Port Relief/Anti Cav. Check Assembly



Lockout Check Assembly



Port Restrictor and Spring Assembly



WH Main Relief Valve Assembly

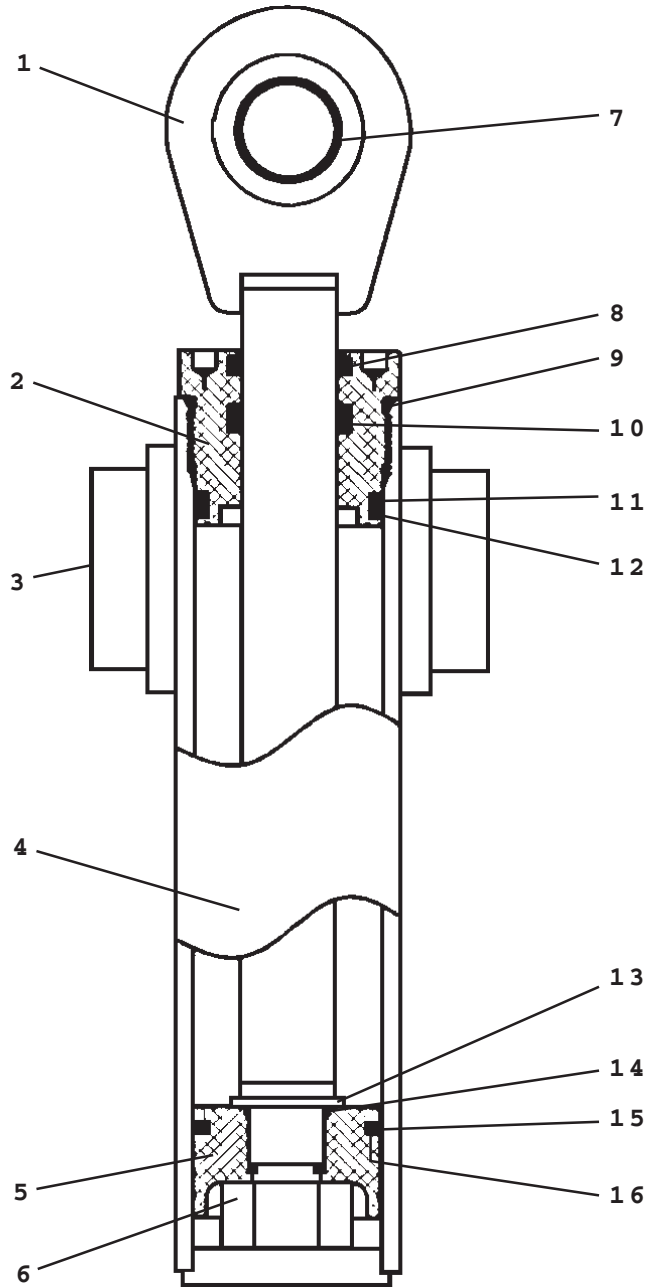
VALVE ASSEMBLY

GRESEN VALVE SERVICE PARTS

NO	PART NO.	DESCRIPTION
1	922371	Spool Positioner Assembly a Bonnet b Spring c Spring Collar d Spool Spud e Screw
2	922368	Cylinder Port Relief Assembly @ 2500 PSI (Due to close tolerances only the seals may be serviced in the field.) 4822 Seal Kit a O-Ring Seal b Backup Ring c O-Ring Seal d Backup Ring e O-Ring Seal
3	922377	Relief/Anti-Cav. Check Assembly @ 2250 PSI (Due to close tolerances only the seals may be serviced in the field.) 4822 Seal Kit a O-Ring Seal b Backup Ring c O-Ring Seal d Backup Ring e O-Ring Seal
4	922375	Lockout Check Assembly (Due to close tolerances only the seals may be serviced in the field.) 4829 Seal Kit a O-Ring Seal b Backup Ring c O-Ring Seal d Backup Ring
5	922357 922358	Port Restrictor Assembly .076 Dia. Orifice Port Restrictor Assembly .109 Dia. Orifice a Spring b Orifice Plate
6	922394	WH Main Relief Valve Assembly @ 2250 PSI (Due to close tolerances only the seals may be serviced in the field.) 45142 Seal Kit a O-Ring Seal b Backup Ring c O-Ring Seal d O-Ring Seal

CYLINDER ASSEMBLY

SWING CYLINDER ASSEMBLY #922070



CYLINDER ASSEMBLY

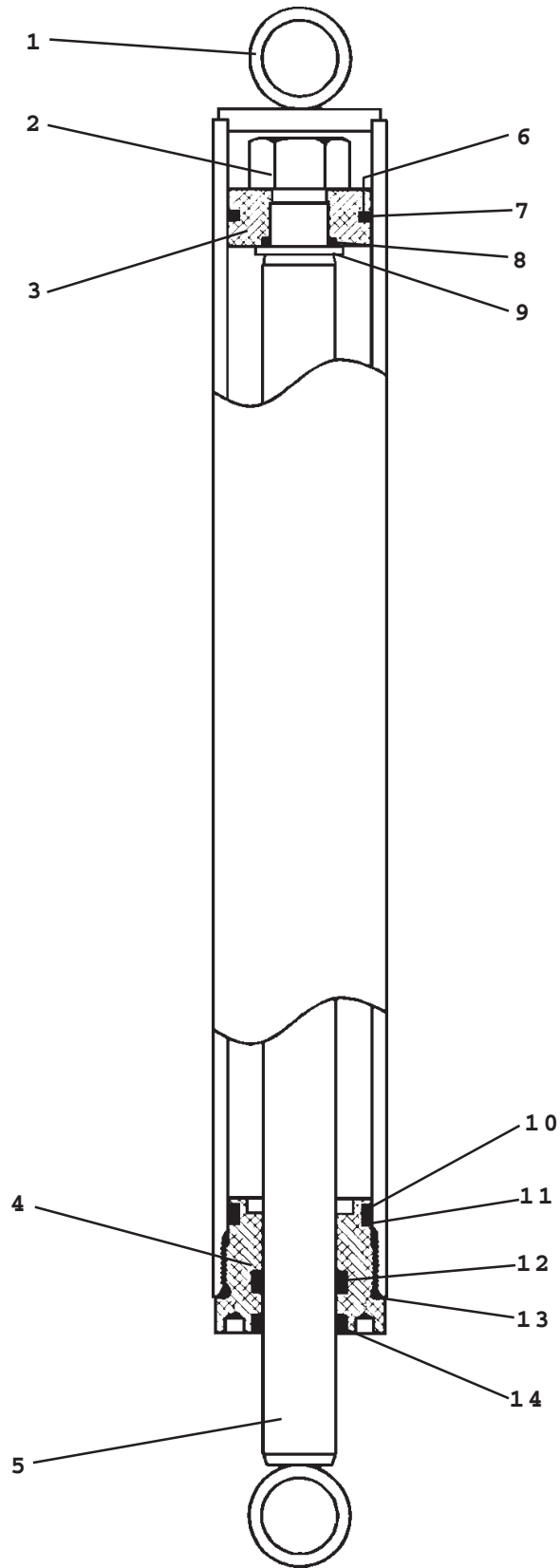
SWING CYLINDER ASSEMBLY #922070

NO	REQ'D	PART NO.	DESCRIPTION
1	1	922077	Cylinder Rod
2	1	922078	Cylinder Gland
3	2	922029	Needle Bearing
4	1	922395	Cylinder Tube
5	1	922080	Piston
6	1	922396	Hex Nut
7	1	922081	Self Aligning Bushing
8	1	922397*	Rod Wiper
9	1	922398*	O'Ring
10	1	922399*	Poly Pak Seal
11	1	922400*	Back-Up Ring
12	1	922401*	O'Ring
13	1	922426	Washer
14	1	922403*	O'Ring
15	1	922404*	Piston Ring
16	1	922405*	O'Ring

NOTE: Seal Kit #922003 Includes all parts marked with an asterisk (*). Parts are not sold separately.

CYLINDER ASSEMBLY

STABILIZER CYLINDER ASSEMBLY #922076



CYLINDER ASSEMBLY

STABILIZER CYLINDER ASSEMBLY #922076

NO	REQ'D	PART NO.	DESCRIPTION
1	1	922406	Cylinder Tube
2	1	922396	Hex Nut
3	1	922019	Piston
4	1	922078	Cylinder Gland
5	1	922002	Cylinder Rod
6	1	922405*	O'Ring
7	1	922404*	Piston Ring
8	1	922403*	O'Ring
9	1	922402	Washer
10	1	922401*	O'Ring
11	1	922400*	Back-Up Ring
12	1	922399*	Poly Pak Seal
13	1	922398*	O'Ring
14	1	922397*	Rod Wiper

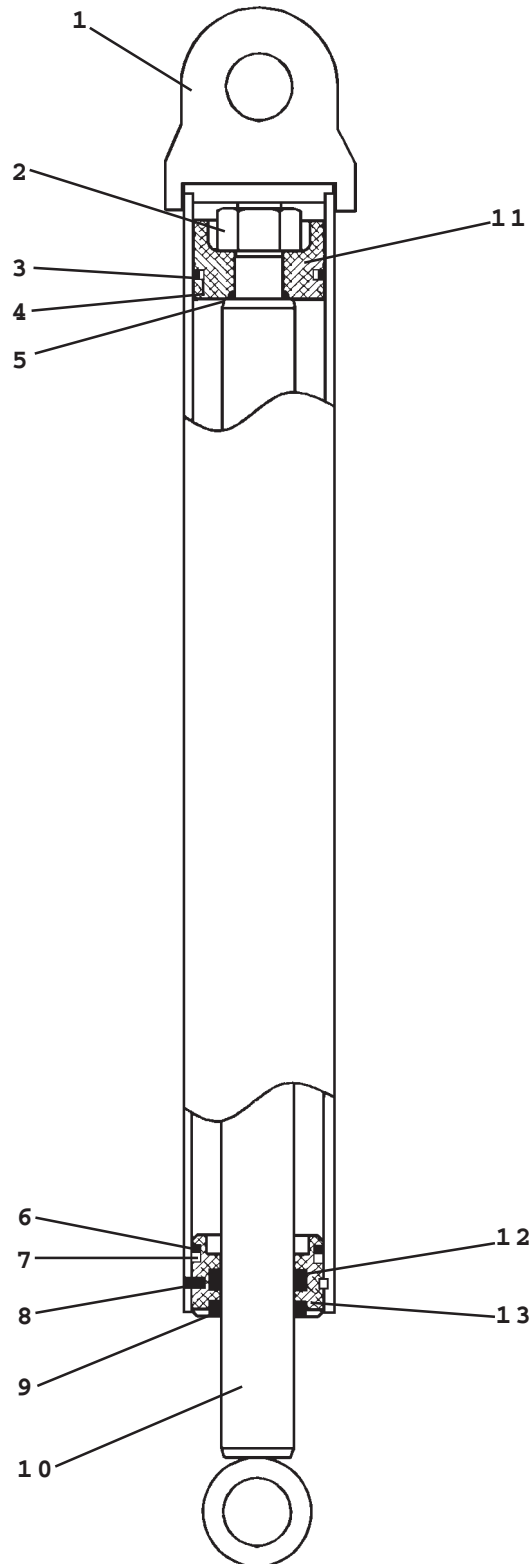
NOTE: Seal Kit #922003 includes all parts marked with an asterisk (*). Parts are not sold separately.

6699
12-4-95

CYLINDER ASSEMBLY

BOOM CYLINDER ASSEMBLY #922153

SERIAL #8408AX973 AND UP



CYLINDER ASSEMBLY

BOOM CYLINDER ASSEMBLY #922153

SERIAL #8408AX973 AND UP

NO	REQ'D	PART NO.	DESCRIPTION
1	1	922407	Cylinder Tube
2	1	922396	Hex Nut
3	1	922398*	O'Ring
4	1	922408*	Piston Ring
5	1	922403*	O'Ring
6	1	922409*	O'Ring
7	1	922410*	Back-Up Washer
8	1	922411*	Gland Retaining Rod
9	1	922412*	Rod Wiper
10	1	922136	Cylinder Rod
11	1	922091	Piston
12	1	922413*	Poly-Pak Seal
13	1	922092	Cylinder Gland
NS	2	922560	Bushing Rod End
NS	1	922559	Bushing Fixed End

**NOTE: Seal Kit #922414 includes all parts marked with an asterisk (*).
Parts are not sold separately.**

7470
12-16-99-2

CYLINDER ASSEMBLY

BOOM CYLINDER ASSEMBLY #922187

NO	REQ'D	PART NO.	DESCRIPTION
1	1	922415	Cylinder Tube
2	1	922396	Hex Nut
3	1	922091	Piston
4	1	922416	Cylinder Gland
5	1	922417	Cylinder Rod
6	2	920114	Self Aligning Bushing
7	1	922398*	O'Ring
8	1	922408*	Piston Ring
9	1	922403*	O'Ring
10	1	922418*	O'Ring
11	1	922410*	Back-Up Ring
12	1	922413*	Poly Pak Seal
13	1	922419*	O'Ring
14	1	922420*	Rod Wiper

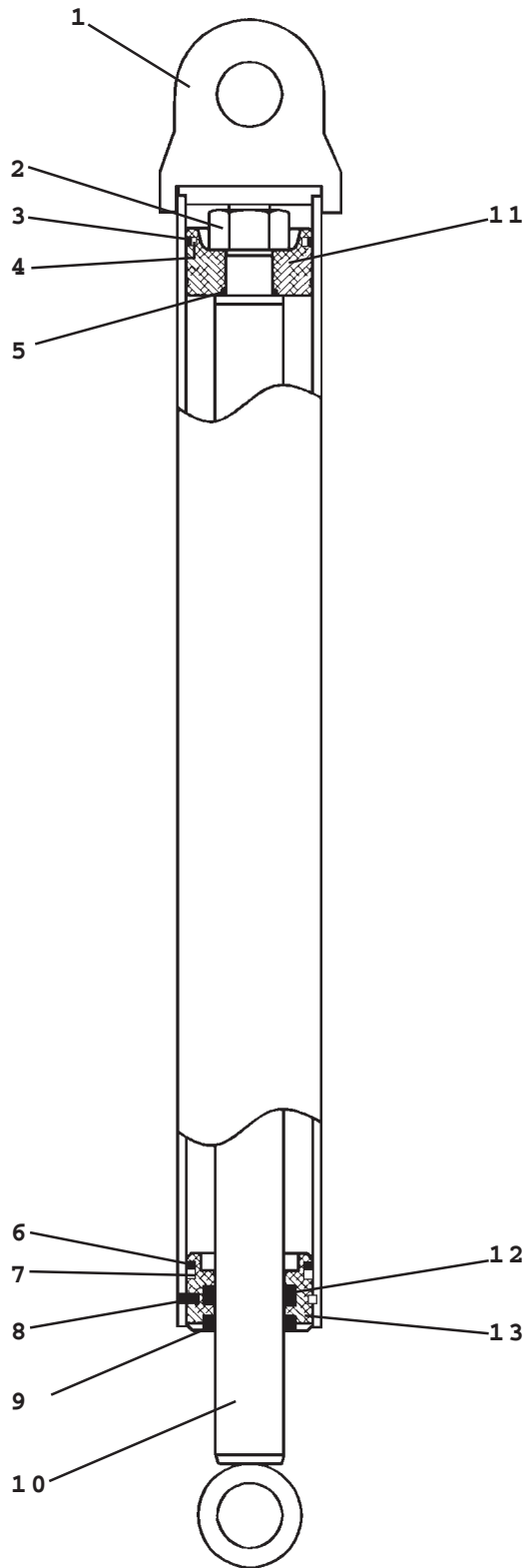
NOTE: Seal Kit #922181 includes all parts marked with an asterisk (*). Parts are not sold separately.

6695
12-4-95

CYLINDER ASSEMBLY

DIPPER CYLINDER ASSEMBLY #922293

SERIAL #8408AX973 AND UP



CYLINDER ASSEMBLY

DIPPER CYLINDER ASSEMBLY #922293

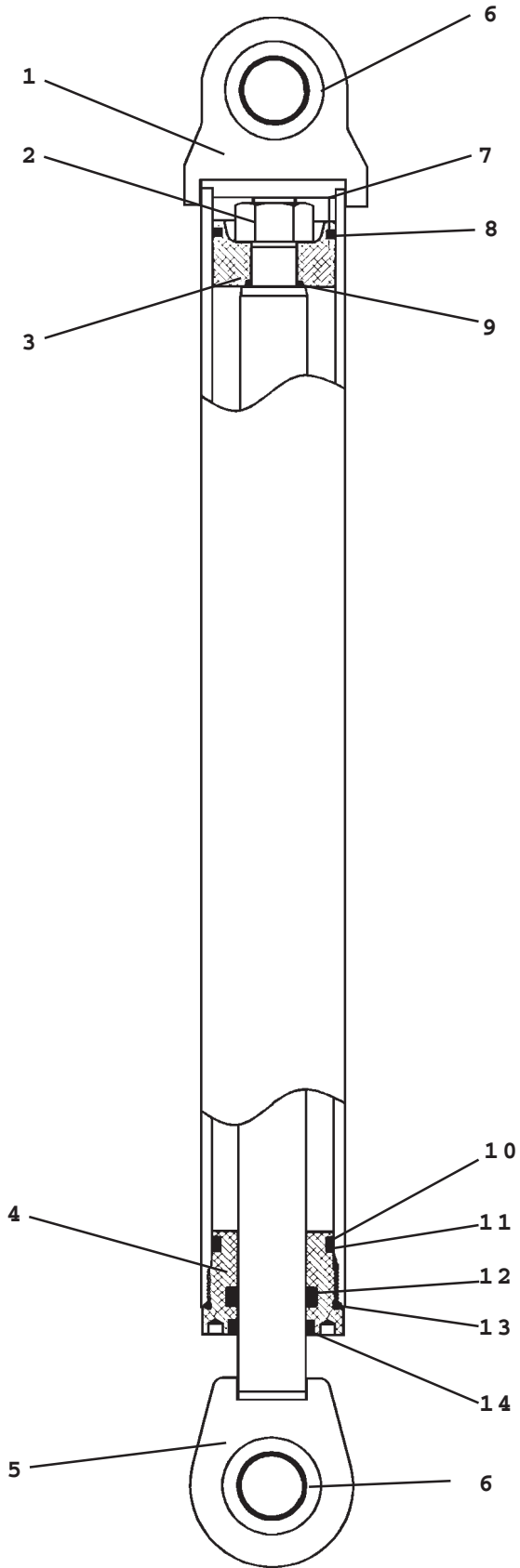
SERIAL #8408AX973 AND UP

NO	REQ'D	PART NO.	DESCRIPTION
1	1	922421	Cylinder Tube
2	1	922396	Hex Nut
3	1	922398*	O'Ring
4	1	922408*	Piston Ring
5	1	922403*	O'Ring
6	1	922409*	O'Ring
7	1	922410*	Back-Up Washer
8	1	922411*	Gland Retaining Rod
9	1	922412*	Rod Wiper
10	1	922422	Cylinder Rod
11	1	922423	Piston
12	1	922413*	Poly-Pak Seal
13	1	922092	Cylinder Gland
NS	2	922560	Bushing Rod End
NS	1	922559	Bushing Fixed End

NOTE: Seal Kit #922414 includes all parts marked with an asterisk (*). Parts are not sold separately.

CYLINDER ASSEMBLY

DIPPER CYLINDER ASSEMBLY #922188



6696
12-4-95

CYLINDER ASSEMBLY

DIPPER CYLINDER ASSEMBLY #922188

NO	REQ'D	PART NO.	DESCRIPTION
1	1	922424	Cylinder Tube
2	1	922396	Hex Nut
3	1	922423	Piston
4	1	922416	Cylinder Gland
5	1	922558	Cylinder Rod
6	2	920114	Self Aligning Bushing
7	1	922398*	O'Ring
8	1	922408*	Piston Ring
9	1	922403*	O'Ring
10	1	922418*	O'Ring
11	1	922410*	Back-Up Ring
12	1	922413*	Poly Pak Seal
13	1	922419*	O'Ring
14	1	922420*	Rod Wiper

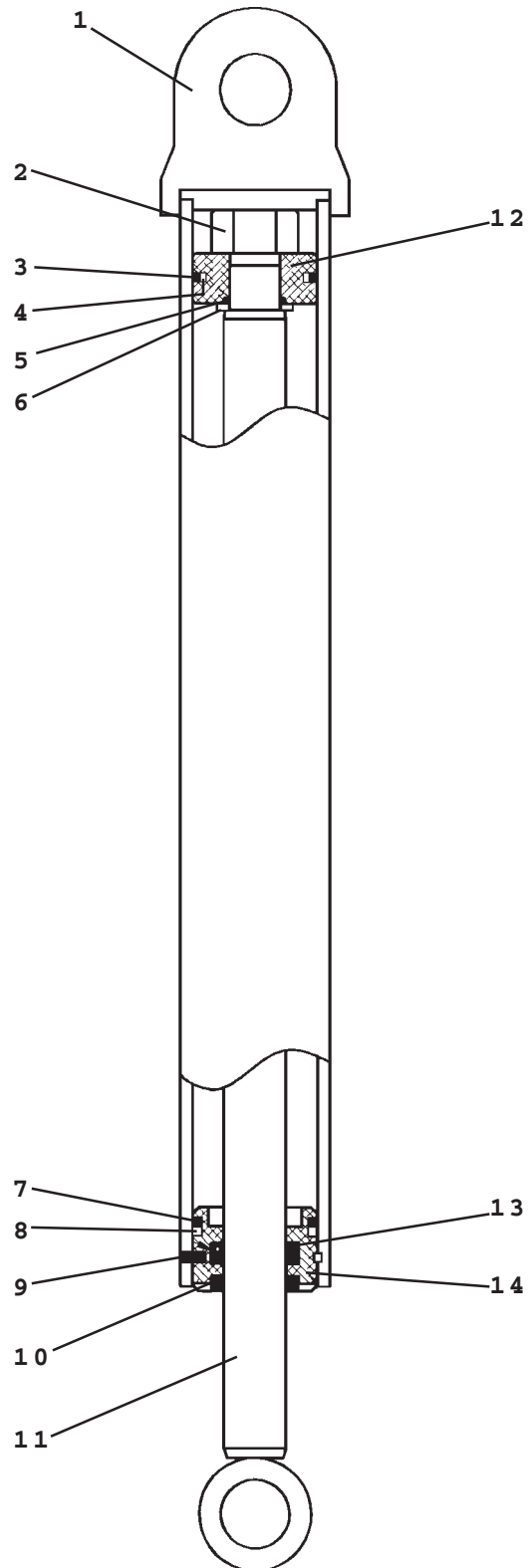
NOTE: Seal Kit #922181 includes all parts marked with an asterisk (*). Parts are not sold separately.

6697
12-4-95

CYLINDER ASSEMBLY

BUCKET CYLINDER ASSEMBLY #922164

SERIAL #8408AX973 AND UP



CYLINDER ASSEMBLY

BUCKET CYLINDER ASSEMBLY #922164

SERIAL #8408AX973 AND UP

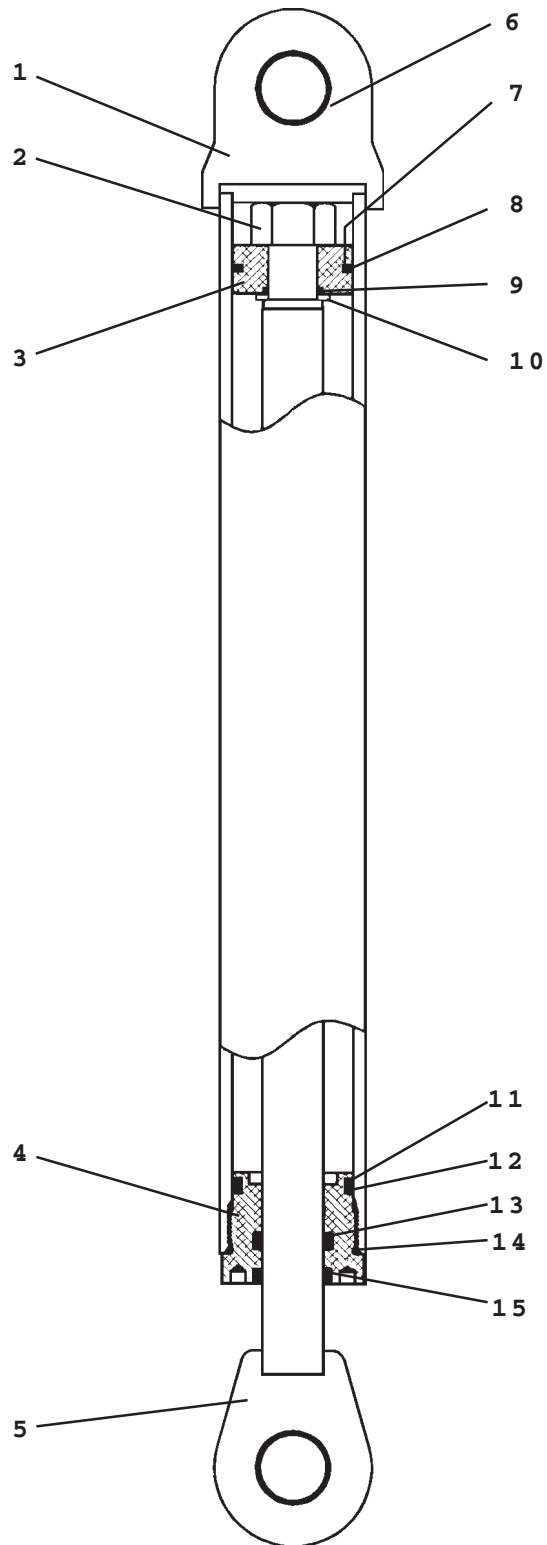
NO	REQ'D	PART NO.	DESCRIPTION
1	1	922425	Cylinder Tube
2	1	922396	Hex Nut
3	1	922404*	Piston Ring
4	1	922405*	O'Ring
5	1	922403*	O'Ring
6	1	922426	Spacer
7	1	922401*	O'Ring
8	1	922400*	Back-Up Washer
9	1	922427*	Gland Retaining Rod
10	1	922428*	Rod Wiper
11	1	922429	Cylinder Rod
12	1	922019	Piston
13	1	922399*	Poly-Pak Seal
14	1	922430	Cylinder Gland
NS	2	922560	Bushing Rod End
NS	1	922559	Bushing Fixed End

NOTE: Seal Kit #922020 includes all parts marked with as asterisk (*). Parts are not sold separately.

7474
6-9-98

CYLINDER ASSEMBLY

BUCKET CYLINDER ASSEMBLY #922190



CYLINDER ASSEMBLY

BUCKET CYLINDER ASSEMBLY #922190

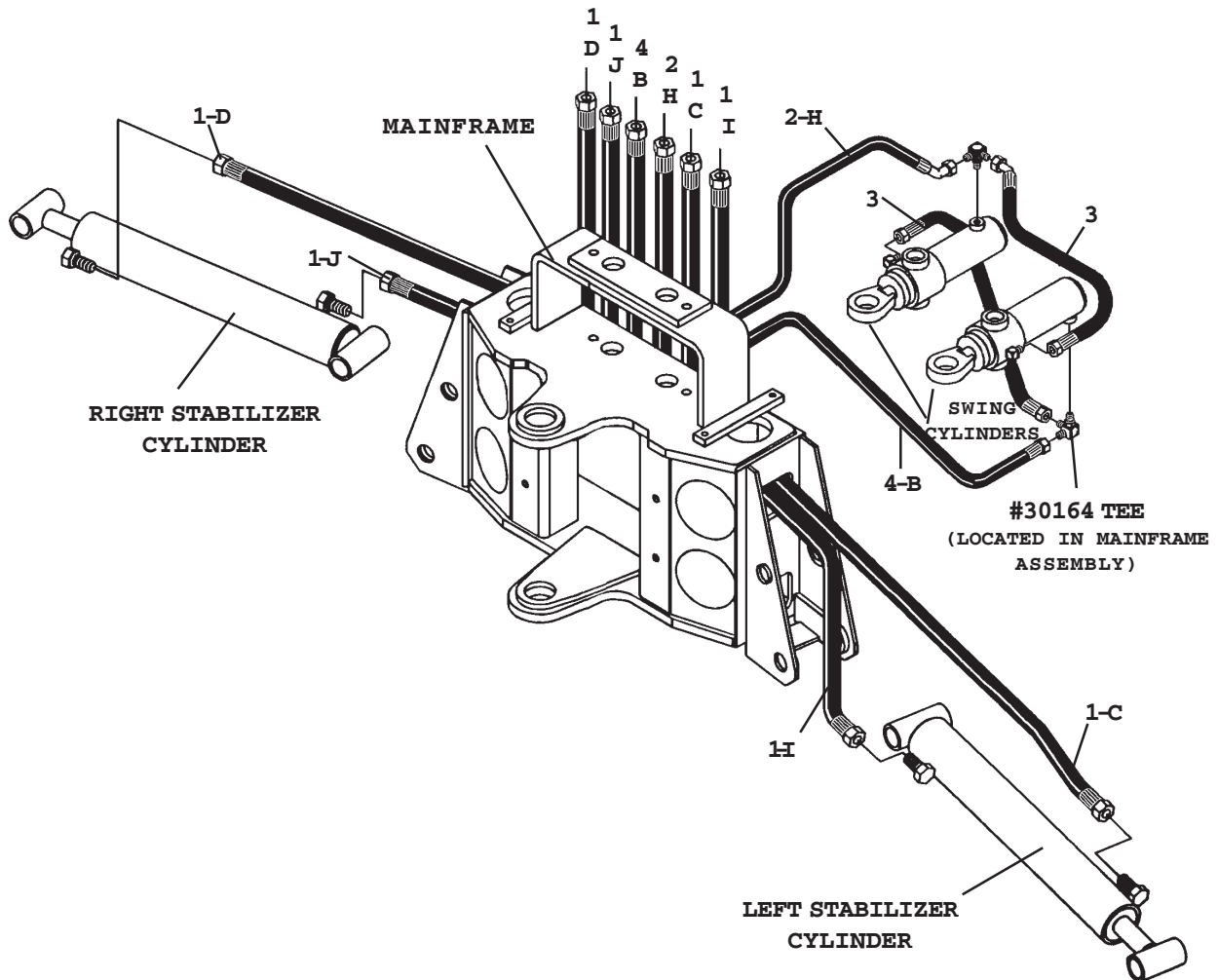
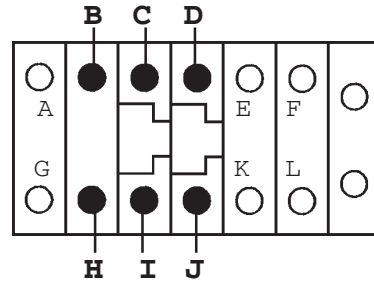
NO	REQ'D	PART NO.	DESCRIPTION
1	1	922461	Cylinder Tube
2	1	922396	Hex Nut
3	1	922019	Piston
4	1	922078	Cylinder Gland
5	1	922432	Cylinder Rod
6	2	920114	Self Aligning Bushing
7	1	922405*	O'Ring
8	1	922404*	Piston Ring
9	1	922403*	O'Ring
10	1	922426	Washer
11	1	922401*	O'Ring
12	1	922400*	Back-Up Ring
13	1	922399*	Poly Pak Seal
14	1	922398*	O'Ring
15	1	922397*	Rod Wiper

NOTE: Seal Kit #922003 includes all parts marked with an asterisk (*). Parts are not sold separately.

MAINFRAME HOSE SET

ASSEMBLY #922105

HYDRAULIC CONTROL VALVE



MAINFRAME HOSE SET

ASSEMBLY #922105

NO	REQ'D	PART NO.	DESCRIPTION
1	4	922242	Hose Assembly .25" X 56" 6FJX-6FJX
2	1	922433	Hose Assembly .25" X 12" 6FJX-6FJX 45° Gooseneck
3	2	922434	Hose Assembly .25" X 14.50" 6FJX-6FJX
4	1	922435	Hose Assembly .25" X 17" 6FJX-6FJX

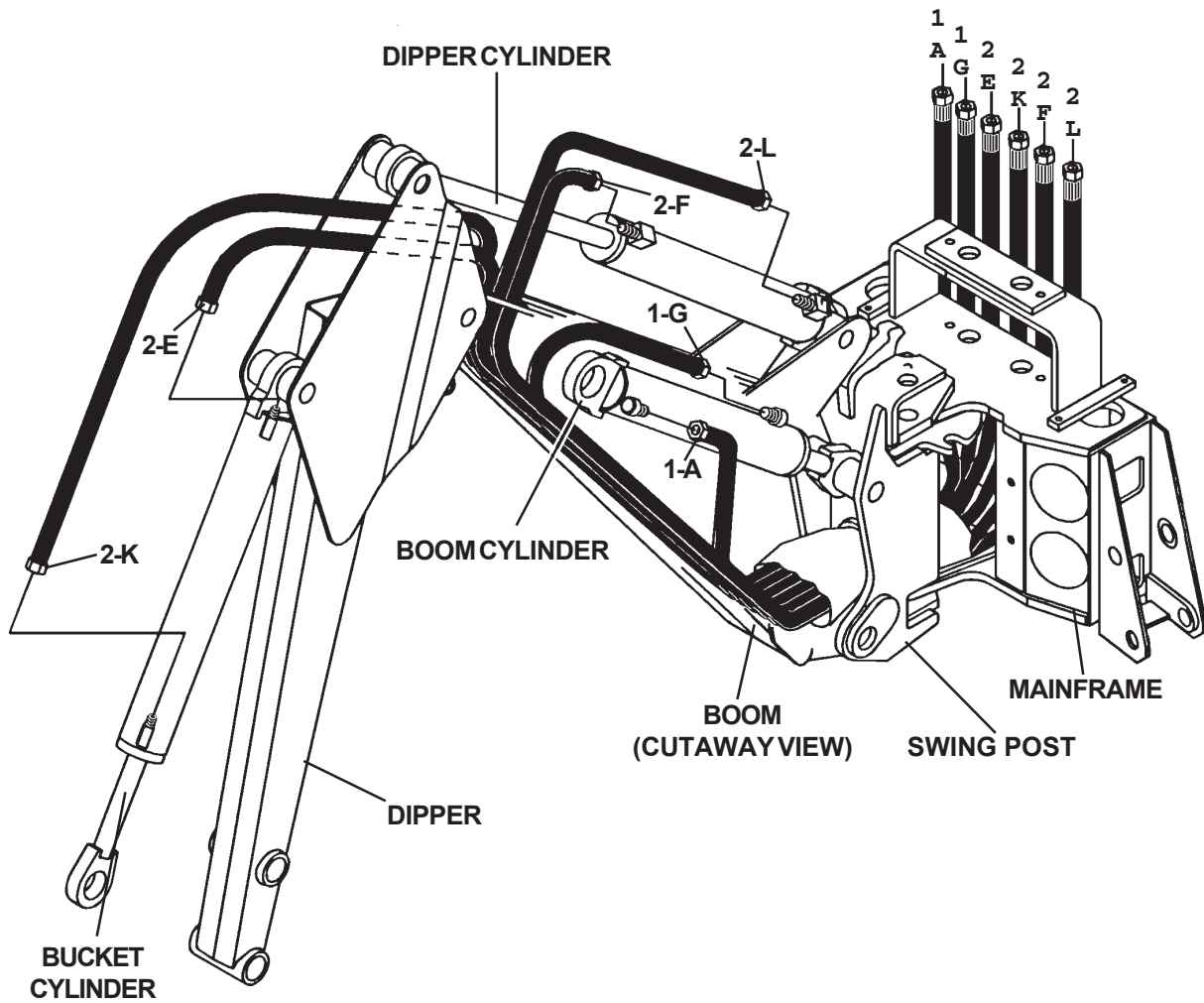
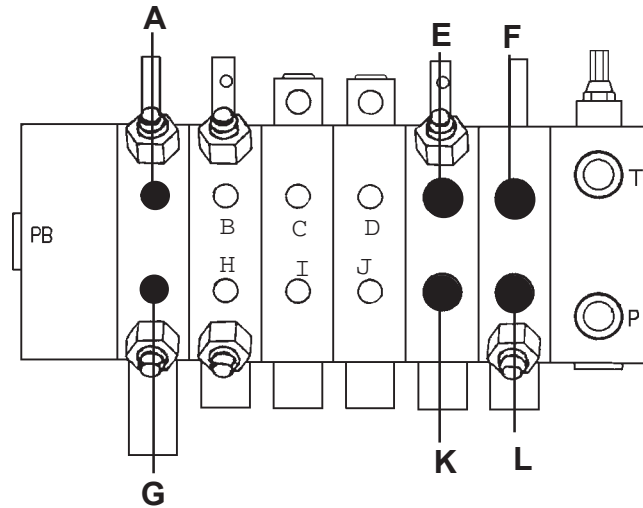
NOTE: Letters on the hose set diagram show the hydraulic hose routing between the backhoe control valve and the various hydraulic cylinders. Simply match the letter on the control valve port to the same letter on the hydraulic hose ends. Example: Hose Assembly labeled "C" runs from the upper Left Stabilizer port on the hydraulic control valve - through the mainframe and to the barrel end fitting on the left stabilizer cylinder.

NOTE: The fittings on the hydraulic cylinders have been altered for clarity purposes. This will assist you in distinguishing between the rod end and the barrel end of the various hydraulic cylinders.

BOOM & DIPPER HOSE SET

(HIDROIRMA VALVE) ASSEMBLY #922107

HIIDROIRMA HYDRAULIC CONTROL VALVE



BOOM & DIPPER HOSE SET

(HIDROIRMA VALVE) ASSEMBLY #922107

NO	REQ'D	PART NO.	DESCRIPTION
1	2	922439	Hose Assembly .38" X 82" 6FJX-6FJX
2	4	922440	Hose Assembly .38" X 131" 6FJX-6FJX

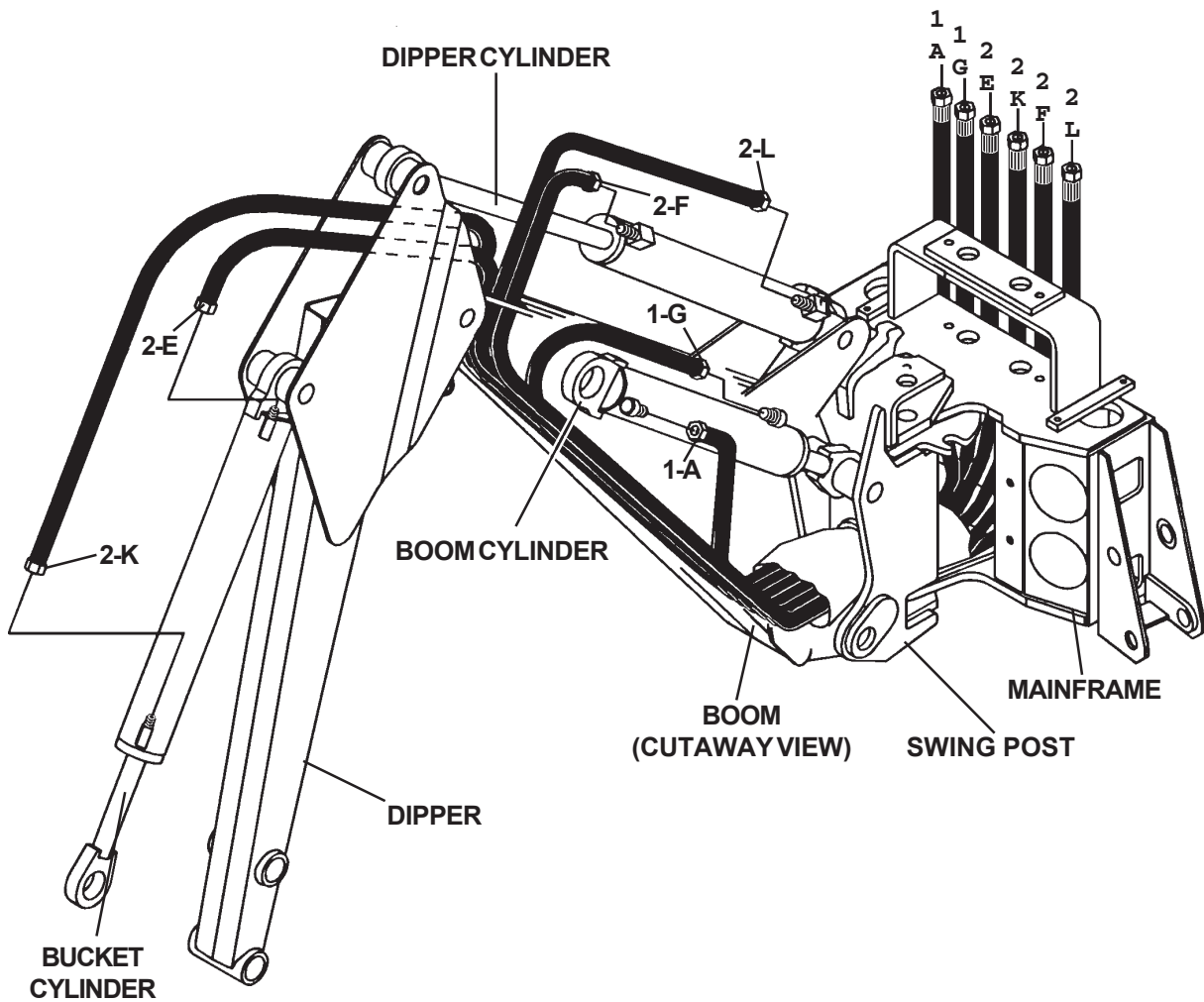
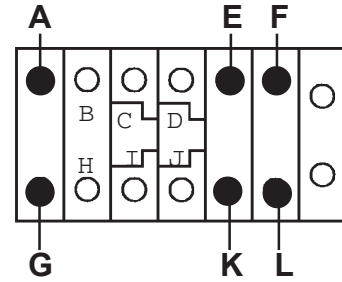
NOTE: Letters on the hose set diagram show the hydraulic hose routing between the backhoe control valve and the various hydraulic cylinders. Simply match the letter on the control valve port to the same letter on the hydraulic hose ends. Example: Hose Assembly labeled "G" runs from the lower Boom port on the hydraulic control valve - through the mainframe and swing post and to the rod end of the boom cylinder.

NOTE: The fittings on the hydraulic cylinders have been altered for clarity purposes. This will assist you in distinguishing between the rod end and the barrel end of the various hydraulic cylinders.

BOOM & DIPPER HOSE SET

ASSEMBLY #922104

HYDRAULIC CONTROL VALVE



BOOM & DIPPER HOSE SET

ASSEMBLY #922104

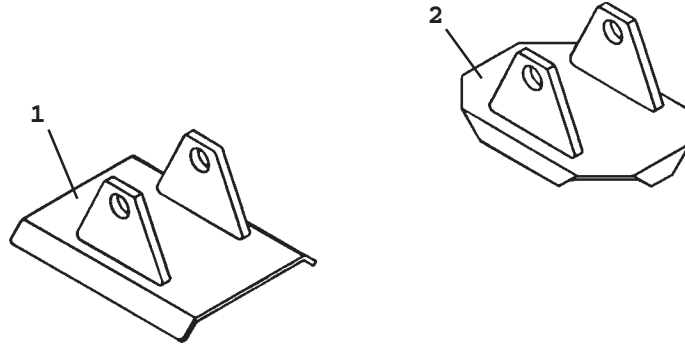
NO	REQ'D	PART NO.	DESCRIPTION
1	2	922215	Hose Assembly .38" X 80" 6FJX-6FJX
2	4	922217	Hose Assembly .38" X 129" 6FJX-6FJX

NOTE: Letters on the hose set diagram show the hydraulic hose routing between the backhoe control valve and the various hydraulic cylinders. Simply match the letter on the control valve port to the same letter on the hydraulic hose ends. Example: Hose Assembly labeled "G" runs from the lower Boom port on the hydraulic control valve - through the mainframe and swing post and to the rod end of the boom cylinder.

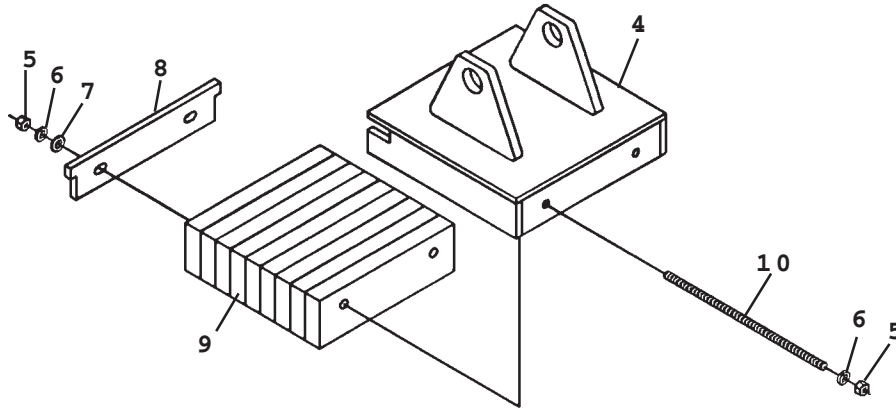
NOTE: The fittings on the hydraulic cylinders have been altered for clarity purposes. This will assist you in distinguishing between the rod end and the barrel end of the various hydraulic cylinders.

6709
9-21-98-2

STABILIZER PADS



3

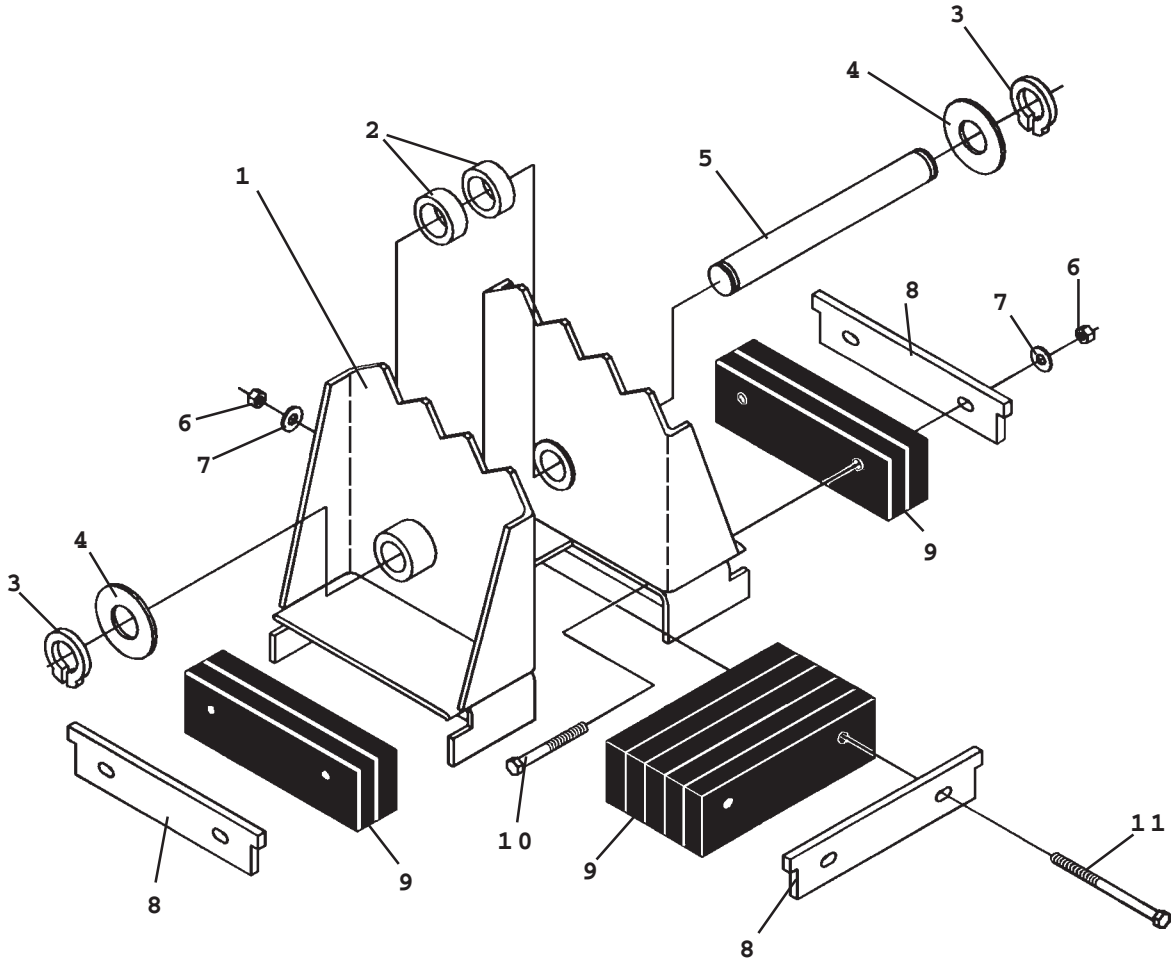


STABILIZER PADS

NO	REQ'D	PART NO.	DESCRIPTION
FLAT STABILIZER PAD ASSEMBLY - #920116			
1	2	920116A	Flat Stabilizer Pad
GROUSER STABILIZER PAD ASSEMBLY - #920115			
2	1	920115	Grouser Stabilizer Pad
RUBBER STABILIZER PAD ASSEMBLY - #920117			
3	2	920117A	Rubber Stabilizer Pad Assembly (Includes Items 4 through 10)
4	1	922444	Stabilizer Pad
5	4	922300	.38" UNC Hex Nut
6	4	922277	.38" Lock Washer
7	2	922273	.38" Flat Washer
8	1	922445	Slide Plate
9	1	922446	Rubber Strip Bundle
10	2	922447	.38" UNC X 11.50" Read Bolt

STABILIZER PADS

FLIP-OVER STABILIZER PAD ASSEMBLY #922453



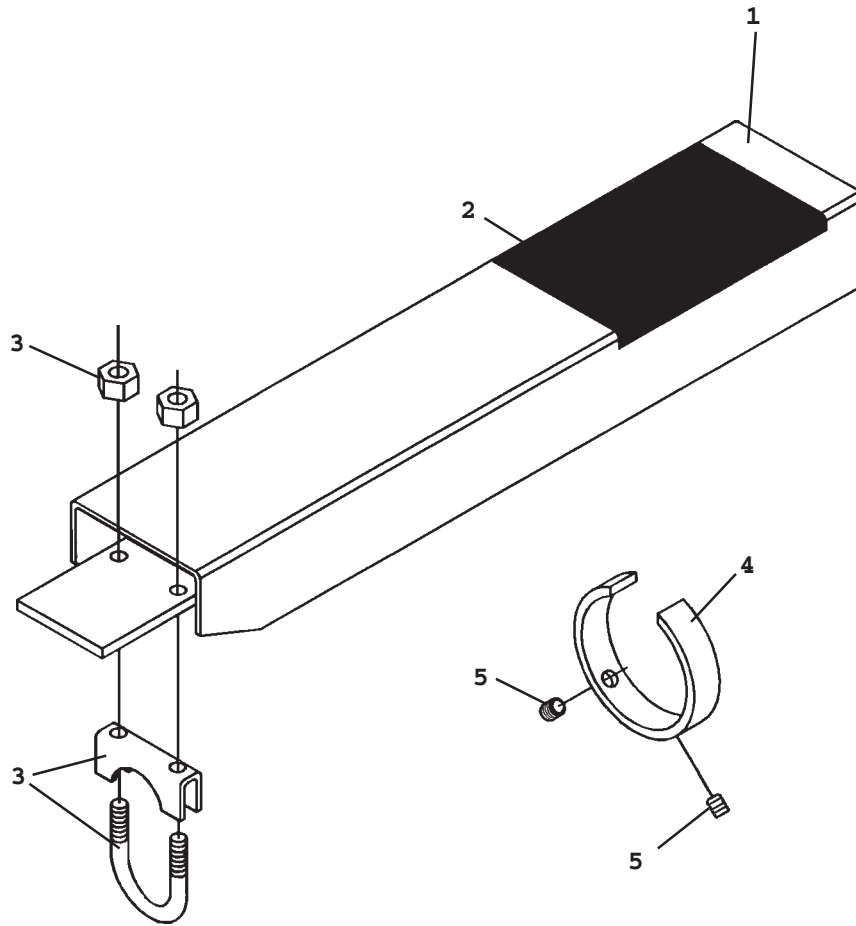
STABILIZER PADS

FLIP-OVER STABILIZER PAD ASSEMBLY #922453

NO	REQ'D	PART NO.	DESCRIPTION
1	1	922448	Flip-Over Pad
2	2	922449	Spacer
3	2	922284	1.25" Snap Ring
4	VARIES	922266	Thrust Washer 1.25" X .078"
	VARIES	922194	Thrust Washer 1.25" X .125"
5	1	922450	Pin
6	6	922283	.38" UNC Hex Deformed Lock Nut
7	6	922273	.38" Flat Washer
8	3	922445	Slide Plate
9	1	922446	Rubber Strip Bundle
10	4	922451	.38" UNC X 3.50" Hex Capscrew
11	2	922452	.38" UNC X 5.00" Hex Capscrew

OPTIONAL STABILIZER CYLINDER COVER

STABILIZER CYLINDER COVER ASSEMBLY #920169

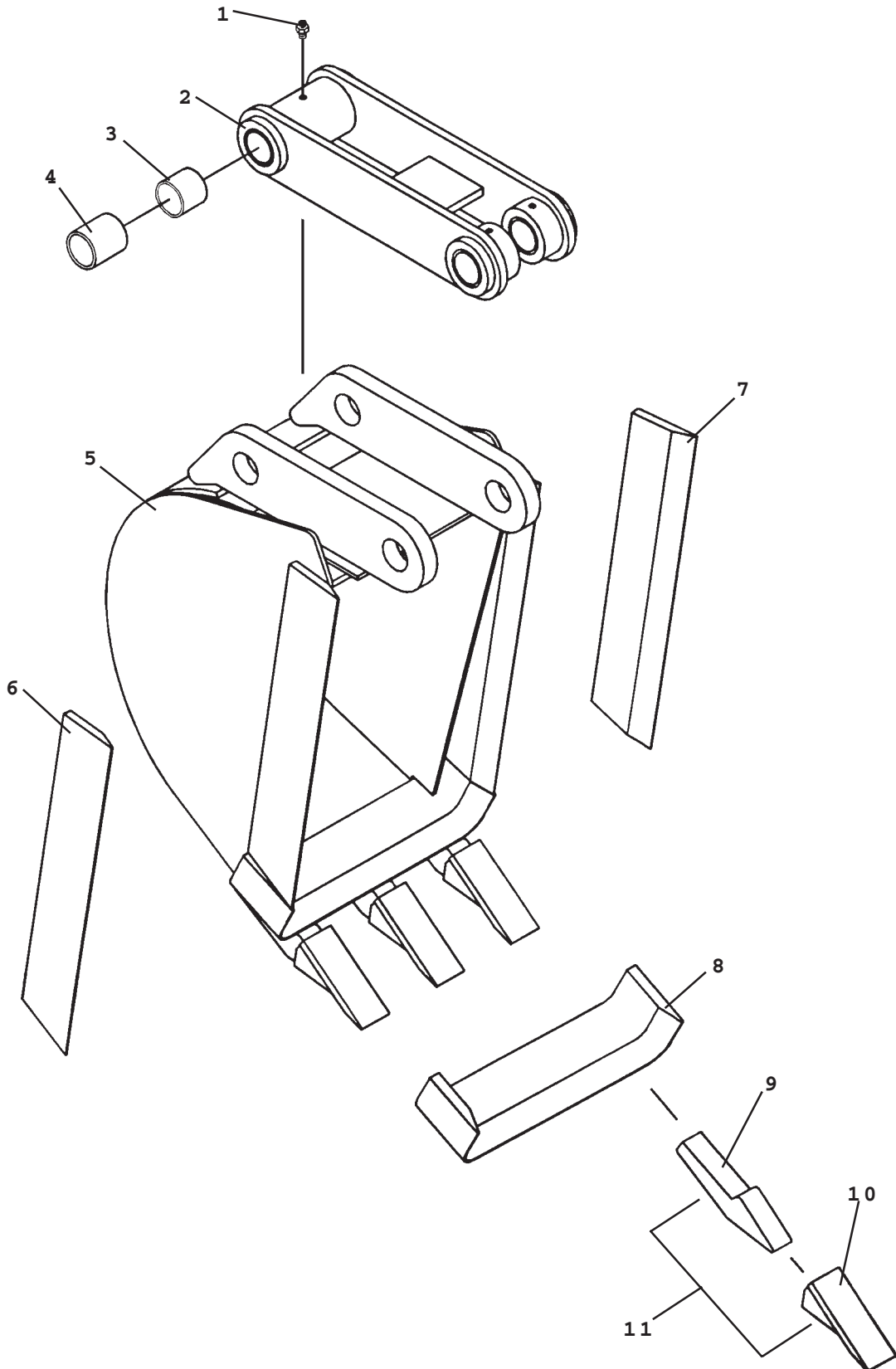


OPTIONAL STABILIZER CYLINDER COVER

STABILIZER CYLINDER COVER ASSEMBLY #920169

NO	REQ'D	PART NO.	DESCRIPTION
1	2	920169	Stabilizer Cylinder Cover with Decal

BUCKET ASSEMBLIES



6735
12-12-95

BUCKET ASSEMBLIES

NO	PART NO.	DESCRIPTION
1	922274	Replacement Grease Zerk
2	922195	Replacement Bucket Link (Requires (3) #922274 Grease Zerks, (4) #922044 Bushings, (1) #922182 Spacer)
3	922182	Replacement Spacer
4	922044	Replacement Bushing
5	920102	10" Bucket Weldment
	920103	12" Bucket Weldment
	920104	16" Bucket Weldment
	920105	18" Bucket Weldment
	920106	24" Bucket Weldment
6	922458	Replacement Right Side Cutter
7	922459	Replacement Left Side Cutter
8	922460	10" Replacement Front Cutter Edge
	922461	12" Replacement Front Cutter Edge
	922462	16" Replacement Front Cutter Edge
	922463	18" Replacement Front Cutter Edge
	922464	24" Replacement Front Cutter Edge
9	922465	Replacement Tooth Shank
10	930286	Replace Tooth Point
11	922466	Replacement Tooth Point & Shank

FIRST LINE REPAIR KIT

ASSEMBLY #922467

